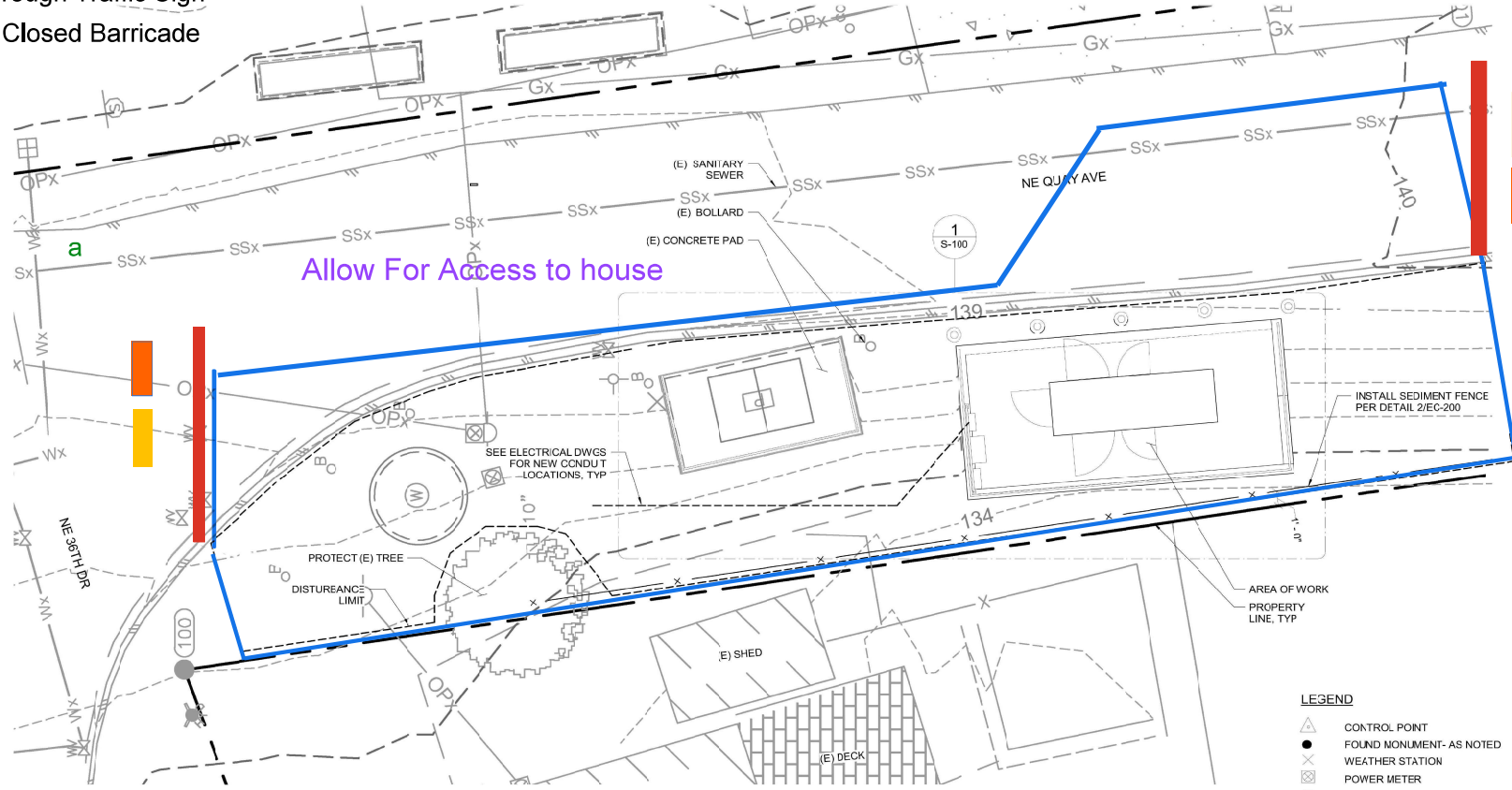


- - Temp Fencing
- - Road Closed Sign
- - No Through Traffic Sign
- - Road Closed Barricade

We will Also be putting a "No Through Traffic" Sign At NE 35th ST & Quay Ave

Allow For emergency Access

Allow For Access to house

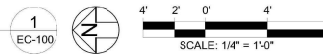


LEGEND


- CONTROL POINT
- FOUND MONUMENT- AS NOTED
- WEATHER STATION
- POWER METER
- POWER POLE
- SANITARY SEWER CLEANOUT
- SANITARY SEWER MANHOLE
- FIRE HYDRANT
- WATER METER
- WATER VALVE
- STORM ROOF DRAIN
- GAS VALVE
- STOP SIGN
- BOLLARD
- TREE- DECIDUOUS
- TREE- CONIFER

Please place additional "Road Closed Local Traffic Only" sign at the Corner of South Quay and NE 35th St.

OVERALL SITE AND EROSION CONTROL PLAN
1/4" = 1'-0"



APPROVED BY THE PUBLIC WORKS DEPARTMENT
SUBJECT TO FULL COMPLIANCE WITH ATTACHED CORRECTIONS



Jason Yoshinaga Mar, 12 2026

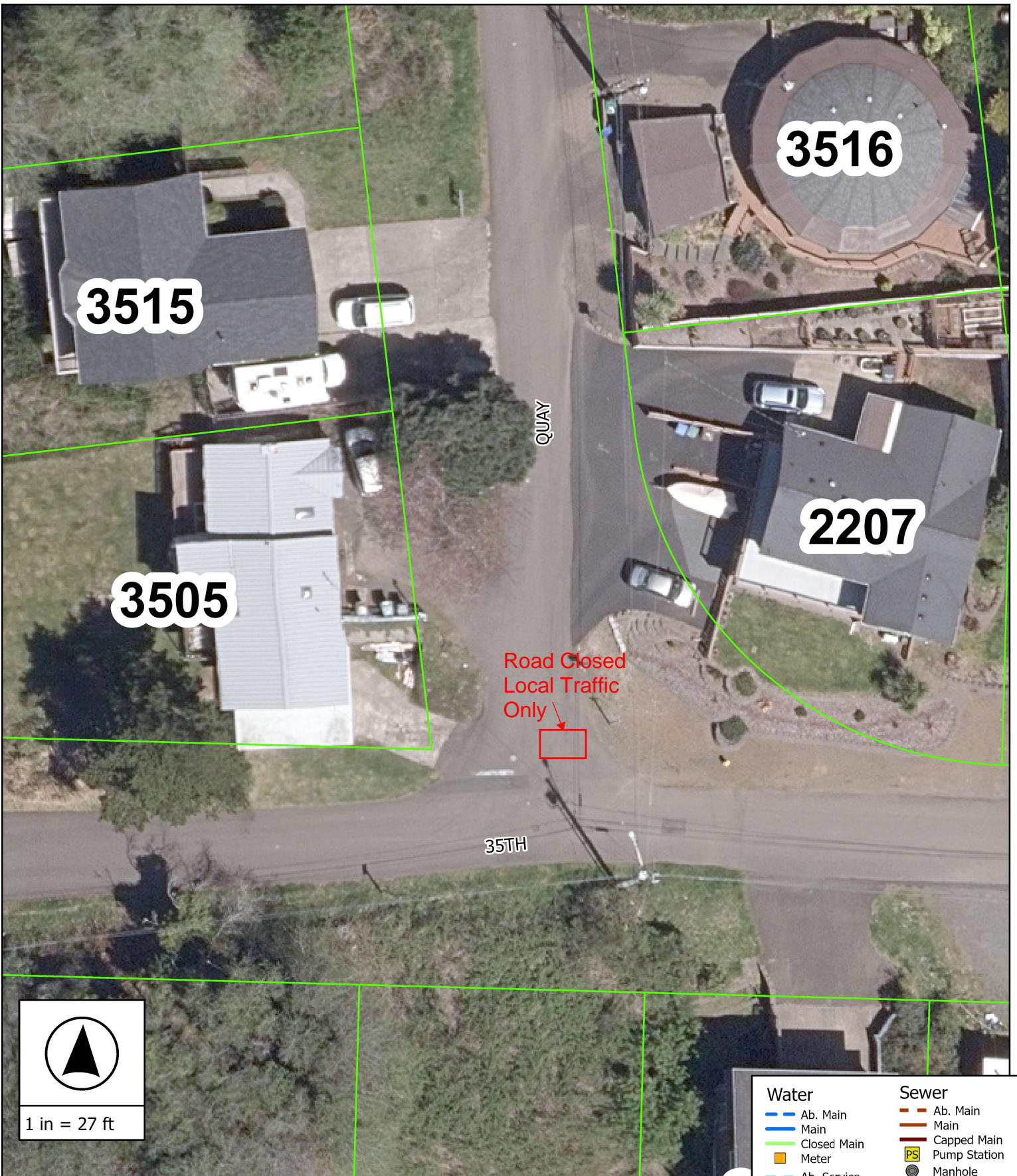
REVIEWED BY:	DATE:	BY:	DR:
NO.	DATE	REVISION	

100% DESIGN



RENEWS 6/30/26

CHECKED BY:	AMWY
DESIGNED BY:	AXVI
DRAWN BY:	JCP
FIRST SUBMITAL DATE:	11-20-2025
PROJECT NO.	LINC0013
SHEET NO.	EC-100



Vicinity Map

City of Lincoln City government use only. Use for any other purpose is entirely at the risk of the user. This product is for informational purposes and may not have been prepared for, or be suitable for legal, engineering, or surveying purposes. Users of this information should review or consult the primary data and information sources to ascertain the usability of the information.

Publish Date: 3/12/2026

Water		Sewer	
Ab. Main	Ab. Main	Ab. Lateral	Ab. Force Main
Main	Main	Lateral	Force Main
Closed Main	Capped Main	Ab. Lateral	City Tax Lots
Meter	Pump Station	Capped Lateral	County Tax Lots
Ab. Service	Manhole		
Service			
Storm			
Ab. Line			
Line			
Force Main			
Manhole			
Catch Basin			

Ab. is abbreviation for "Abandoned"