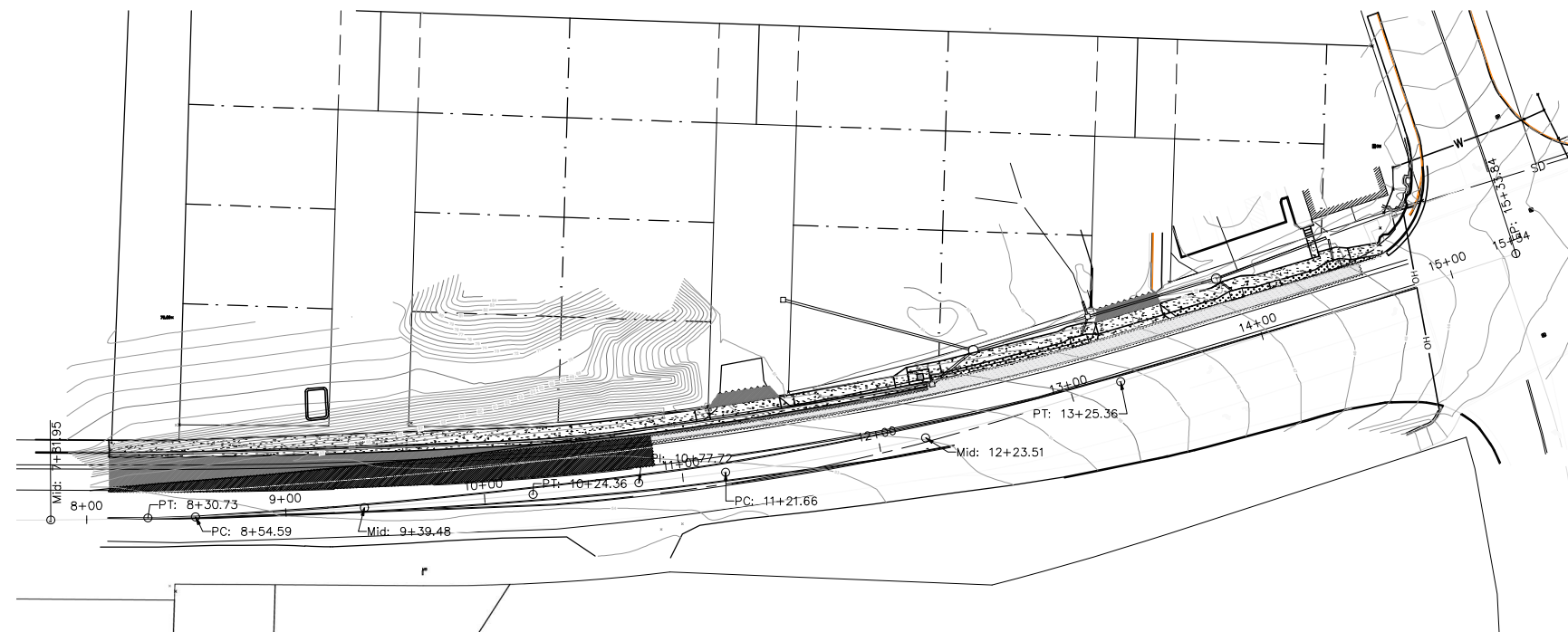


4200 N HWY IMPROVEMENTS - COVER

Description	SYMBOL
Building Footprint	—
Centerline	—
Comm Line	C — C
Control Points	△
Demo	-----DEMO-----DEMO-----DEMO-----
Do not Demo	-----NO_DEMO-----NO_DEMO-----
Easements	—
Edge of Pavement (EOP)	-----
Existing Asphalt	-----
Existing Asphalt Pattern	-----
Existing Concrete	-----
Existing Concrete Pattern	-----
Fences	—
Fiberoptic, TV or Telephone Structures	C
Gas Distribution Main	G — G — G
Gas Distribution Service	G — G — G
Gas Valve	⊗
Guy Anchor	—
Junction Box	⊠
Miscellaneous Points	X
Overhead Wire	OH — OH — OH
Power Structure	E
Proposed Asphalt	-----
Proposed Asphalt Pattern	-----
Proposed Concrete	-----
Proposed Concrete Pattern	-----
Proposed Sawcut or Mill Extent	-----
Sewer Cleanout	⊕
Sewer Gravity Main	SS — SS — SS
Sewer Lateral	SS — SS — SS
Sewer Manhole	⊙
Sewer Pressurized Main	—
Sewer Structures	—
Sign	⊙
Signal Poles, Power Pole	⊙
Storm Catch Basin	⊠
Storm Culvert	—
Storm Ditch	ST — ST — ST
Storm Gravity Main	ST — ST — ST
Storm Sewer NEW: piping	—
Storm Sewer NEW: structrs	—
Storm/Drainage Manhole	⊕
Taxlot	—
Test Pits/Bore holes	⊕
Topo-Bench Mark	△
Topo-major contours, NEW	—
Topo-major gridlines	—
Topo-minor contours, NEW	—
Vege-Shrub	⊗
Vege-Tree Deciduous	⊙
Vege-Tree Evergreen	⊙
Water Fire Hydrant	⊗
Water Meter	⊕
Water Pressurized Main	w — w — w
Water Service Lateral	w — w — w
Water Valve	⊗
Water-New Pipe	—
Water-Pipe Restraint	—



Sh. No.	Title
1	COVER
2	C101b - Demo Plan
3	C200C - Construction Notes 1
4	C200D - Construction Notes 2
5	C201C - Section Views
6	C400B - Striping Notes
7	C600 - Stormwater Overview
8	C601A - Stormwater Construction 1
9	C601B - Stormwater Construction 2
11	C502 - Details
12	C503 - Details
13	C504 - Details
14	C505 - Details
15	C506 - Details

General Notes:

- **Traffic Control Plans** shall be prepared and submitted by the selected contractor prior to the start of construction. Prepared traffic control plans shall adhere to MUTCD guidelines, applicable ODOT standard details, and adhere to Region 2 District 4 permit conditions included within project contract documents.
- District 4 Lane restrictions dictate any work resulting in or requiring lane closures shall be completed as night work with no closures on Friday.

General Notes

OWNER: LINCOLN CITY
CITY OF LINCOLN CITY
801 SW HIGHWAY 101
PO BOX 50
LINCOLN CITY, OREGON 97367

CONTACT: TERRY CHAMBERLIN, P.E.
PHONE: 541.996.1292

CALL BEFORE YOU DIG!
1-800-332-2344

ATTENTION:
OREGON LAW REQUIRES YOU TO FOLLOW RULES ADOPTED BY THE OREGON UTILITY NOTIFICATION CENTER (ONUC) FOR THE PROTECTION OF THE PUBLIC BY CALLING THE CENTER PRIOR TO THE COMMENCEMENT OF ANY EXCAVATION WORK. FOR THE OREGON UTILITY NOTIFICATION CENTER IS (503) 252-1907.

No.	Revision/Issue	Date

LINCOLN CITY PUBLIC WORKS
801 S.W. HWY 101
P.O. BOX 50
LINCOLN CITY, OREGON 97367
PHONE: (541) 996-2154
FAX: (541) 994-4881
www.lincolncity.org

Project Name and Sheet Name

4200 N HWY IMPROVEMENTS
COVER

DESIGNED BY: DW
PREPARED BY: DW

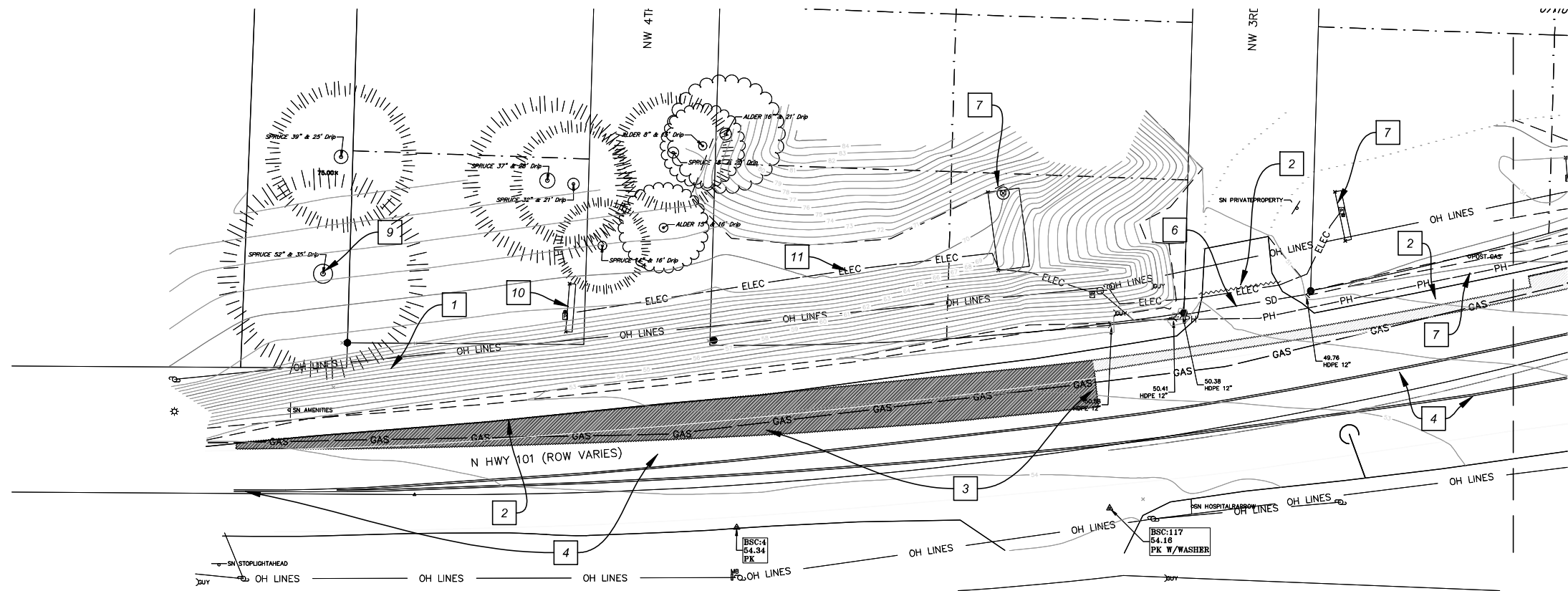
Project No.: 24032	Sheet No.:
Date: 3/17/2026	1 OF 15
Scale: As Noted	IF LESS THAN FULL SIZE, NTS

12/8/2025 C200s.dwg

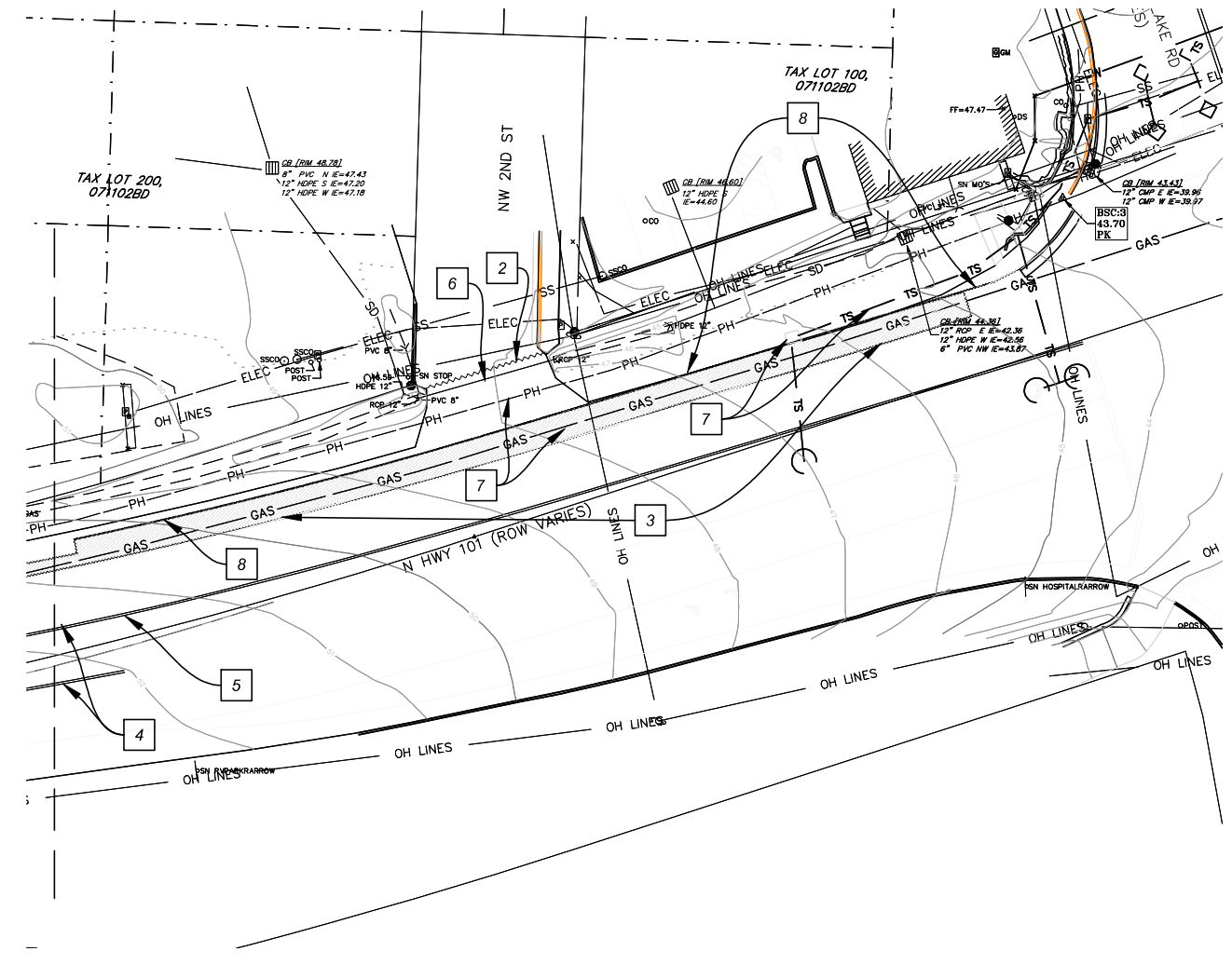
J:\engineering developer projects\0_ACTIVE\haic - 4125 n hwy 101\0001\city right-of-way improvements (off frontage)\9019\plans\CAD 3/17/2026

4200 N HWY IMPROVEMENTS - C101B - DEMO PLAN

Scale: 1"=20'



- 1 LAYBACK SLOPE PER GRADING PLAN. TIE INTO PROPOSED GRADING ON ADJACENT PROPERTY.
- 2 SAWCUT & REMOVE EXISTING FOR CURBLINE &/OR PAVEMENT REPLACEMENT
- 3 GRIND FOR INLAY 4" DEPTH IN TRAVEL LANE 2" DEPTH IN BIKE LANE
- 4 REMOVE YELLOW LINE STRIPING
- 5 END STRIPING REMOVAL
- 6 REMOVE EXISTING STORM DRAIN
- 7 PRESERVE EXISTING UTILITY/STRUCTURE
- 8 SAWCUT NEW EDGE OF PAVEMENT. REMOVE EXISTING ASPHALT BEYOND
- 9 REMOVE EXISTING TREE



- 10 EXISTING BILLBOARD TO BE ADJUSTED/RECONSTRUCTED TO ACCOMMODATE GRADING PER PLAN
REMOVAL / REPLACEMENT / REPAIR OF SIGN COMPONENTS SHALL NOT EXCEED 6 MONTHS START TO FINISH
SIGN SHALL BE PLACED IN EXACT LOCATION, WITH NO CHANGES FROM EXISTING SIGN FEATURES SUCH AS SIZE, DIMENSIONS, OR LIGHTING. SEE STRUCTURAL PLANS
- 11 DEMOLISH AND RECONSTRUCT UNDERGROUND ELECTRICAL SERVICE TO EXISTING SIGN FOLLOWING SITE GRADING. SEE STRUCTURAL AND CONSTRUCTION DETAIL.

General Notes

OWNER: LINCOLN CITY
CITY OF LINCOLN CITY
801 SW HIGHWAY 101
PO BOX 50
LINCOLN CITY, OREGON 97367

CONTACT: TERRY CHAMBERLIN, P.E.
PHONE: 541.996.1292

No.	Revision/Issue	Date

LINCOLN CITY PUBLIC WORKS
801 S.W. HWY 101
P.O. BOX 50
LINCOLN CITY, OREGON 97367
PHONE: (541) 996-2154
FAX: (541) 994-4881
www.lincolncity.org

Project Name and Sheet Name

4200 N HWY IMPROVEMENTS
C101b - Demo Plan

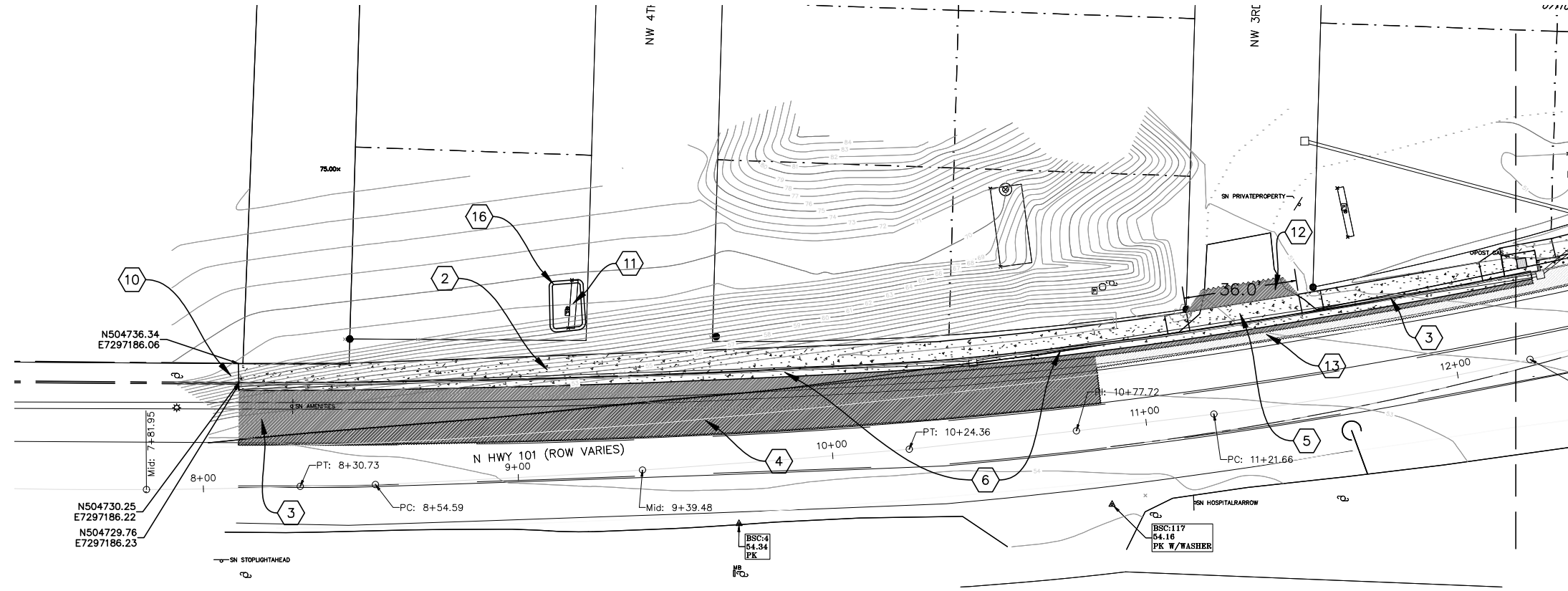
DESIGNED BY: DW
PREPARED BY: DW

Project No.: 24032	Sheet No.:
Date: 12/9/2025	2 OF 15
Scale: As Noted <small>IF LESS THAN FULL SIZE, NTS</small>	

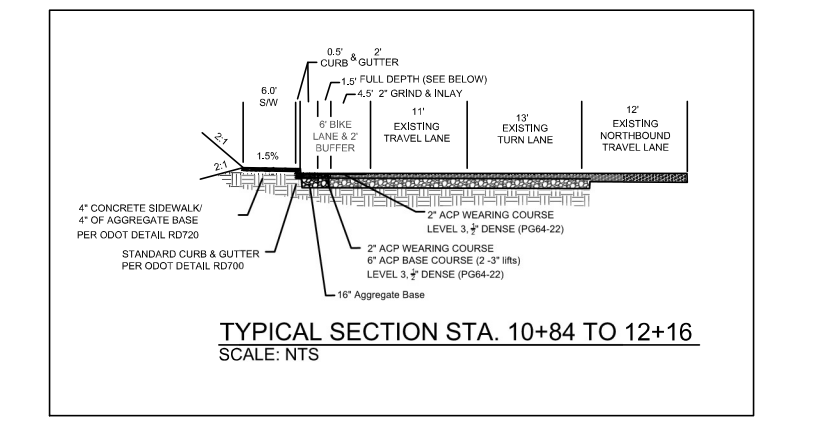
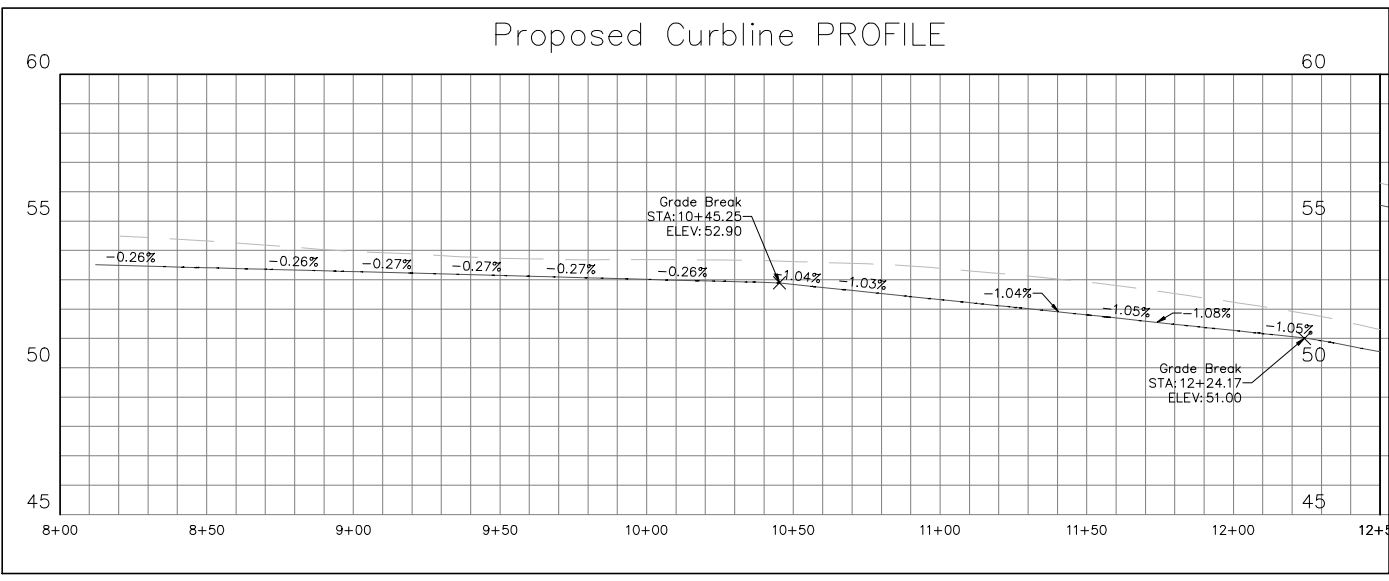
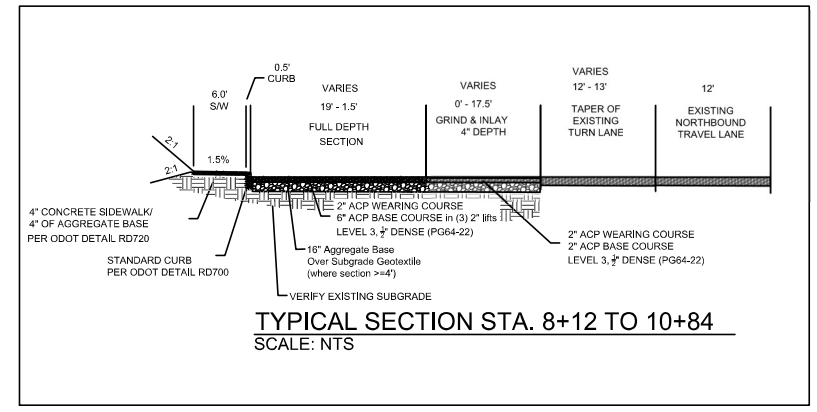
J:\engineering developer projects\0_ACTIVE\hlc - 4125 n hwy 101\ODOT\city right-of-way improvements (off frontage)\919\plans\CAD 3/17/2026

4200 N HWY IMPROVEMENTS - C200C - CONSTRUCTION NOTES 1

Scale: 1"=20'



- ① CONSTRUCT STANDARD CURB PER ODOT RD700
- ② CONSTRUCT 6' SIDEWALK PER RD720
CONSTRUCT OVER 4" AGGREGATE BASE
- ③ CONSTRUCT FULL DEPTH PAVEMENT SECTION :
2" ACP WEARING COURSE
6" ACP BASE COURSE
16" AGGREGATE BASE
- ④ GRIND & INLAY - 4" DEPTH
4" ACP WEARING COURSE
OVER EXISTING ACP
- ⑤ CONSTRUCT DRIVEWAY PER ODOT RD735
OPTION G
- ⑥ CONSTRUCT 12" STORM LINE PER C600s
- ⑩ CONNECT TO AND MATCH EXISTING IMPROVEMENTS BY OTHERS (STA 8+12)
- ⑪ BILLBOARD RECONSTRUCTION PER PLANS & PERMIT.
SEE STRUCTURAL
- ⑫ RESTORE DRIVEWAY APRON, 4" ACP
- ⑬ GRIND & INLAY - 2" DEPTH
2" ACP WEARING COURSE
OVER EXISTING ACP



- ⑮ INSTALL NEW 3" ELECTRICAL CONDUIT AND METER BASE ON BILLBOARD PER PACIFIC POWER SPECIFICATIONS.

100A METER BASE AND LOAD CENTER TO BE STAINLESS STEEL.

MATCH EXISTING LIGHTING FIXTURE STYLE AND LUMINANCE WITH EQUIVALENT LED FIXTURE. PROVIDE DIRECTIONAL SHIELD TO MATCH EXISTING.
- ⑯ INSTALL LANDSCAPE WALL (LOCK & LOAD OR SIMILAR APPROVED SYSTEM) TO LEVEL AREA IMMEDIATELY BELOW BILLBOARD.
WALL TO STAY WITHIN PRIVATE PROPERTY, <4' HIGH. EXTEND GEOGRID REINFORCEMENT AT FILL WALL SECTION 2.5' MIN.
BACKFILL WITH 3/4"-0" OR 1"-0" AND COMPACT TO 95%
MAINTAIN HEIGHT ABOVE GRADE LEVEL (HAGL) AS NOTED IN BILLBOARD PLANS.

General Notes

OWNER: LINCOLN CITY
CITY OF LINCOLN CITY
801 SW HIGHWAY 101
PO BOX 50
LINCOLN CITY, OREGON 97367

CONTACT: TERRY CHAMBERLIN, P.E.
PHONE: 541.996.1292

No.	Revision/Issue	Date

LINCOLN CITY PUBLIC WORKS
801 S.W. HWY 101
LINCOLN CITY, OREGON 97367
PHONE: (541) 996-2154
FAX: (541) 994-4881
www.lincolncity.org

Project Name and Sheet Name
4200 N HWY IMPROVEMENTS
C200C - Construction Notes 1

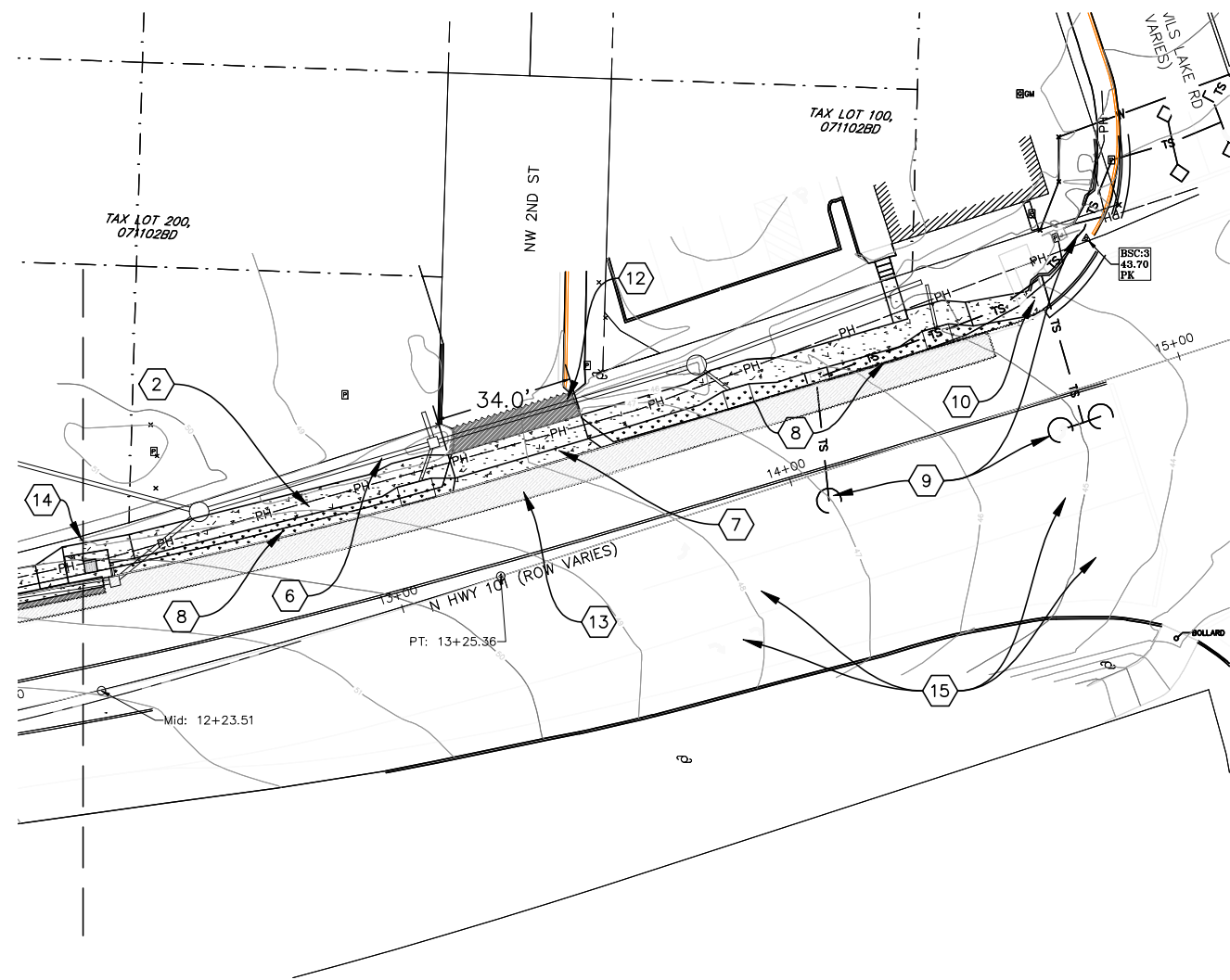
DESIGNED BY: DW
PREPARED BY: DW

Project No.: 24032	Sheet No.:
Date: 3/17/2026	3 OF 15
Scale: As Noted IF LESS THAN FULL SIZE, NTS	

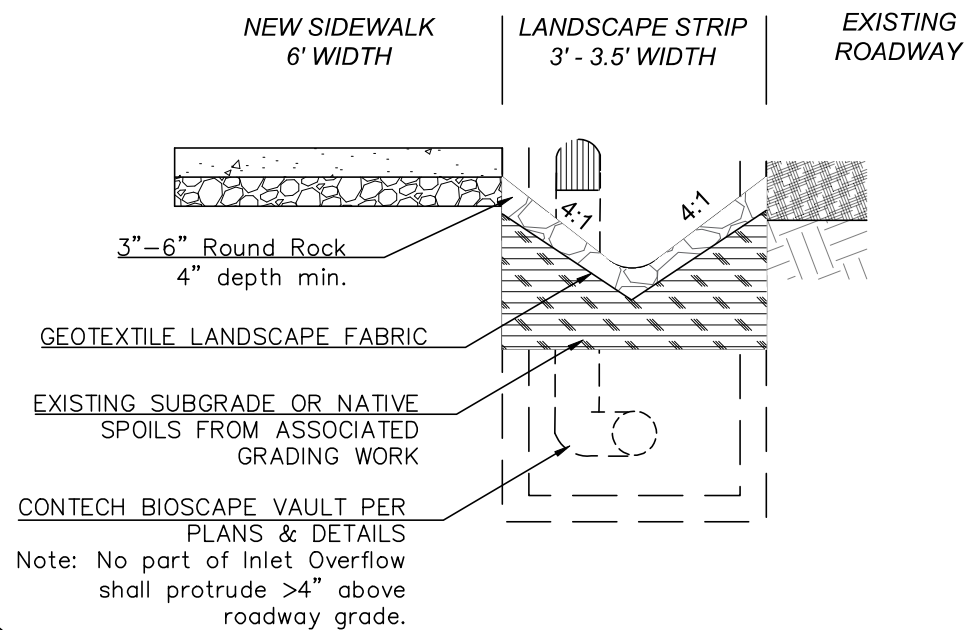
J:\Engineering Developer Projects\0_ACTIVE\HALC - 4125 N Hwy 101\ODOT\City Right-of-way Improvements (Off Frontage)\Plans\CAD 3/27/2026

4200 N HWY IMPROVEMENTS - C200D - CONSTRUCTION NOTES 2

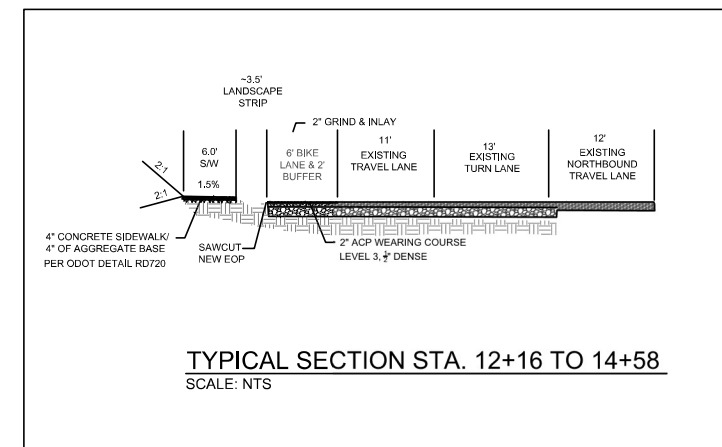
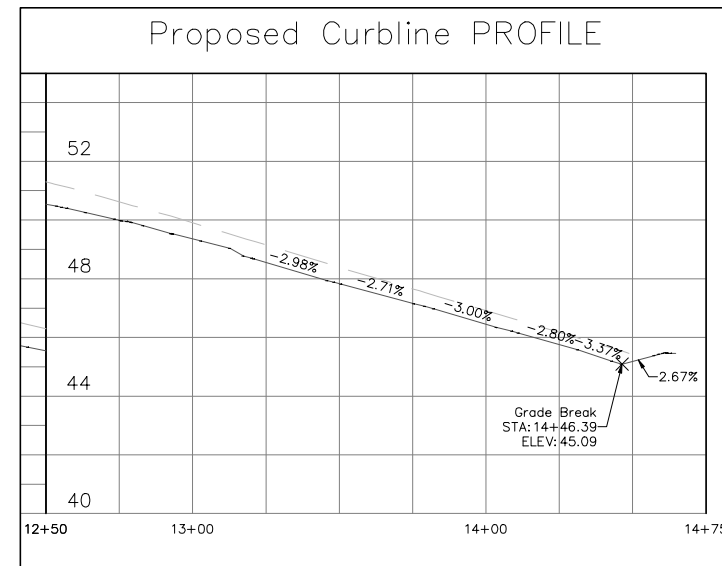
Scale: 1"=20'



LANDSCAPE STRIP DETAIL



- 1 CONSTRUCT STANDARD CURB PER ODOT RD700
- 2 CONSTRUCT 6' SIDEWALK PER RD720
CONSTRUCT OVER 4" AGGREGATE BASE
- 4 GRIND & INLAY - 4" DEPTH 4" ACP WEARING COURSE OVER EXISTING ACP
- 6 CONSTRUCT 12" STORM LINE PER C600 SERIES
- 7 CONSTRUCT SEPARATED DRIVEWAY PER ODOT RD725 OPTION A
- 8 CONSTRUCT VARIABLE WIDTH LANDSCAPE STRIP. PER DETAIL
- 9 ABANDON EXISTING LEFT TURN LANE SIGNAL LOOPS. INSTALL RADAR ON NW SIGNAL POLE PER TM466 AND TM470. UTILIZE EXISTING CONDUIT TO SIGNAL CABINET. PROVIDE AND INSTALL RADAR HARDWARE WITHIN CABINET PER ODOT BLUE SHEET QUALIFICATIONS & SPECIFICATIONS.
- 10 CONNECT TO AND MATCH EXISTING IMPROVEMENTS BY OTHERS
- 12 RESTORE DRIVEWAY APRON, 4" ACP
- 13 GRIND & INLAY - 2" DEPTH 2" ACP WEARING COURSE OVER EXISTING ACP



- 14 ENSURE MINIMUM 5' CLEARANCE AROUND TREE WELL GRATE
- 15 PRESERVE AND PROTECT ALL OTHER EXISTING SIGNAL LOOPS

NOTE: RADAR INSTALLATION MUST BE COMPLETED BY A LICENSED ELECTRICIAN. WORK MUST BE COORDINATED AND AN ODOT SIGNAL OR ELECTRICAL STAFF MUST BE PRESENT DURING INSTALLATION.

General Notes

OWNER: LINCOLN CITY
CITY OF LINCOLN CITY
801 SW HIGHWAY 101
PO BOX 50
LINCOLN CITY, OREGON 97367

CONTACT: TERRY CHAMBERLIN, P.E.
PHONE: 541.996.1292

No.	Revision/Issue	Date

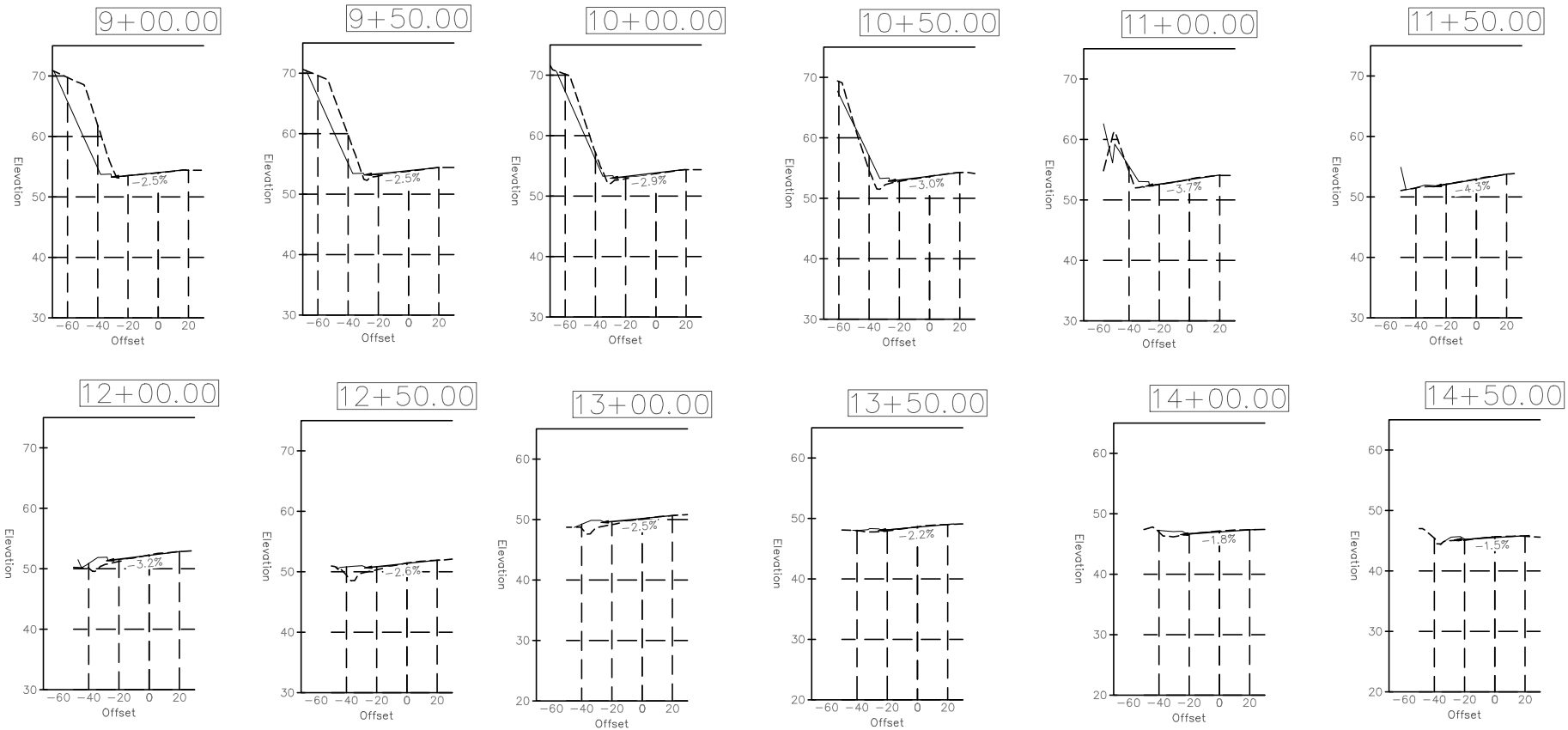
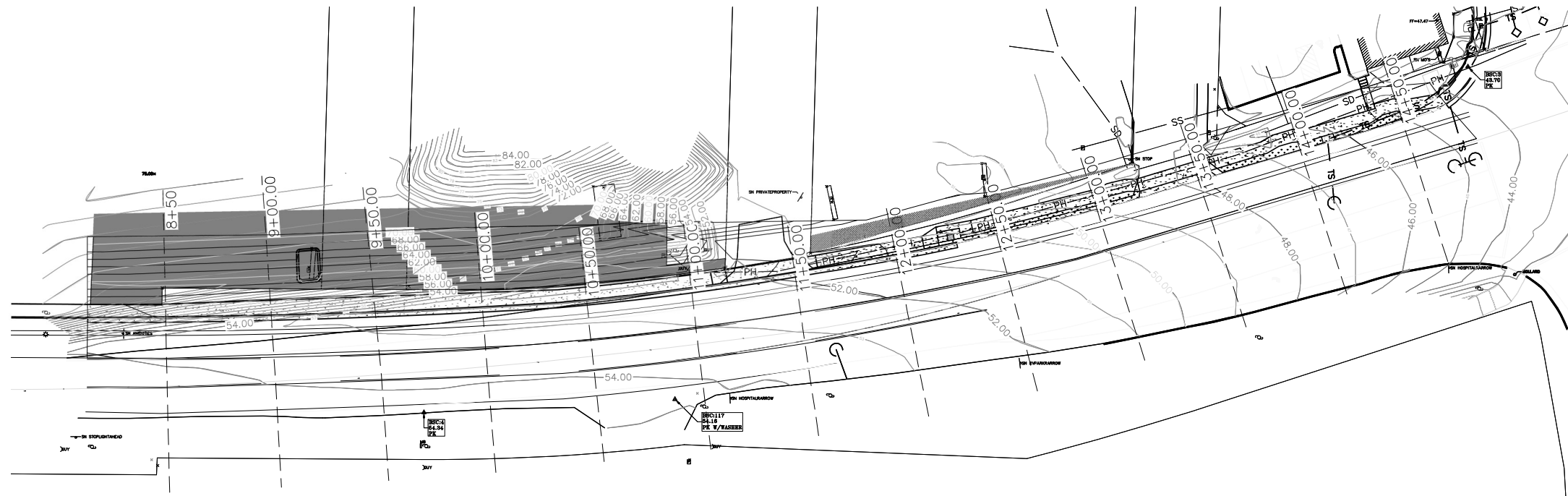
LINCOLN CITY PUBLIC WORKS
801 S.W. HWY 101
P.O. BOX 50
LINCOLN CITY, OREGON 97367
PHONE: (541) 996-2154
FAX: (541) 994-4881
www.lincolncity.org

Project Name and Sheet Name
4200 N HWY IMPROVEMENTS
C200D - Construction Notes 2

DESIGNED BY: DW
PREPARED BY: DW

Project No.: 24032	Sheet No.
Date: 3/25/2026	4 OF 15
Scale: As Noted IF LESS THAN FULL SIZE, NTS	

4200 N HWY IMPROVEMENTS - C201C - SECTION VIEWS

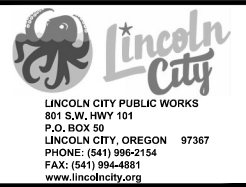


General Notes

OWNER: LINCOLN CITY
 CITY OF LINCOLN CITY
 801 SW HIGHWAY 101
 PO BOX 50
 LINCOLN CITY, OREGON 97367
 CONTACT: TERRY CHAMBERLIN, P.E.
 PHONE: 541.996.1292



No.	Revision/Issue	Date



Project Name and Sheet Name
4200 N HWY IMPROVEMENTS
 C201C - Section Views
 DESIGNED BY: DW
 PREPARED BY: DW

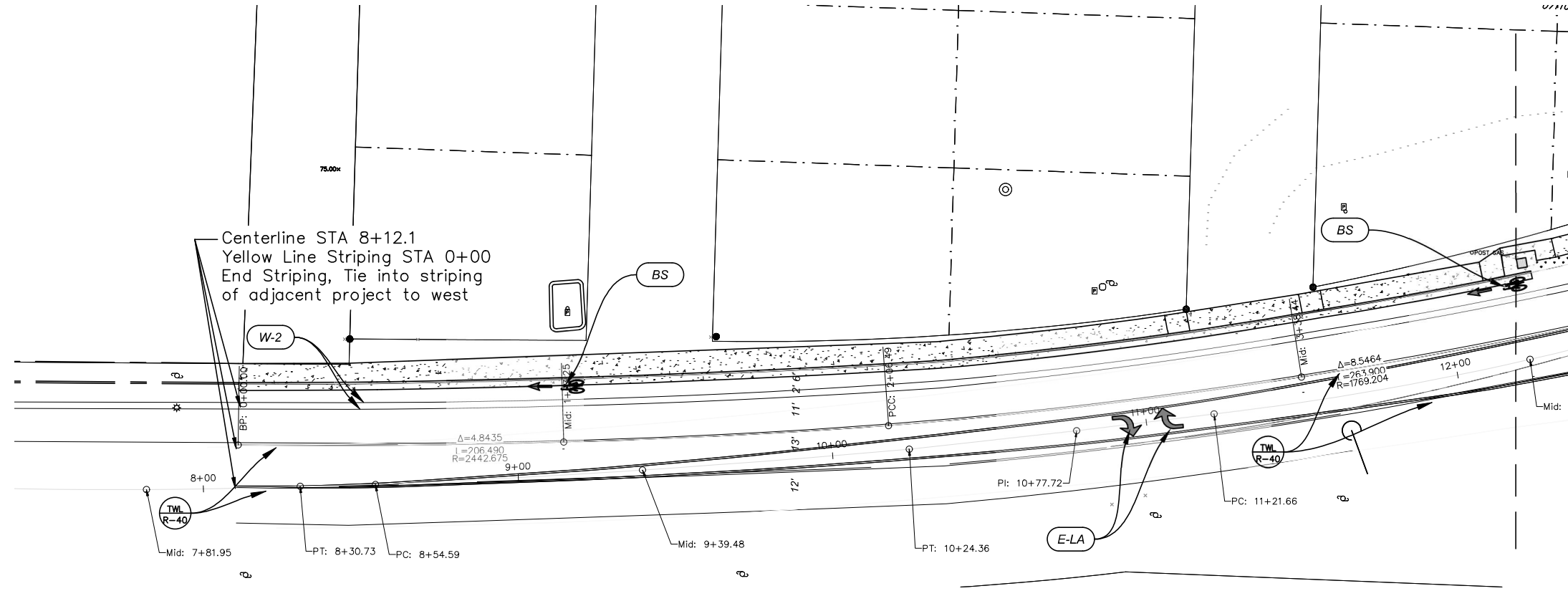
Project No.: 24032	Sheet No.:
Date: 3/17/2026	5 of 15
Scale: As Noted IF LESS THAN FULL SIZE, NTS	

J:\engineering developer projects\0-ACTIVE\haic\4125 n hwy 101\0001\city right of way improvements (off frontage)\99615pe\plans\CAD 3/17/2026

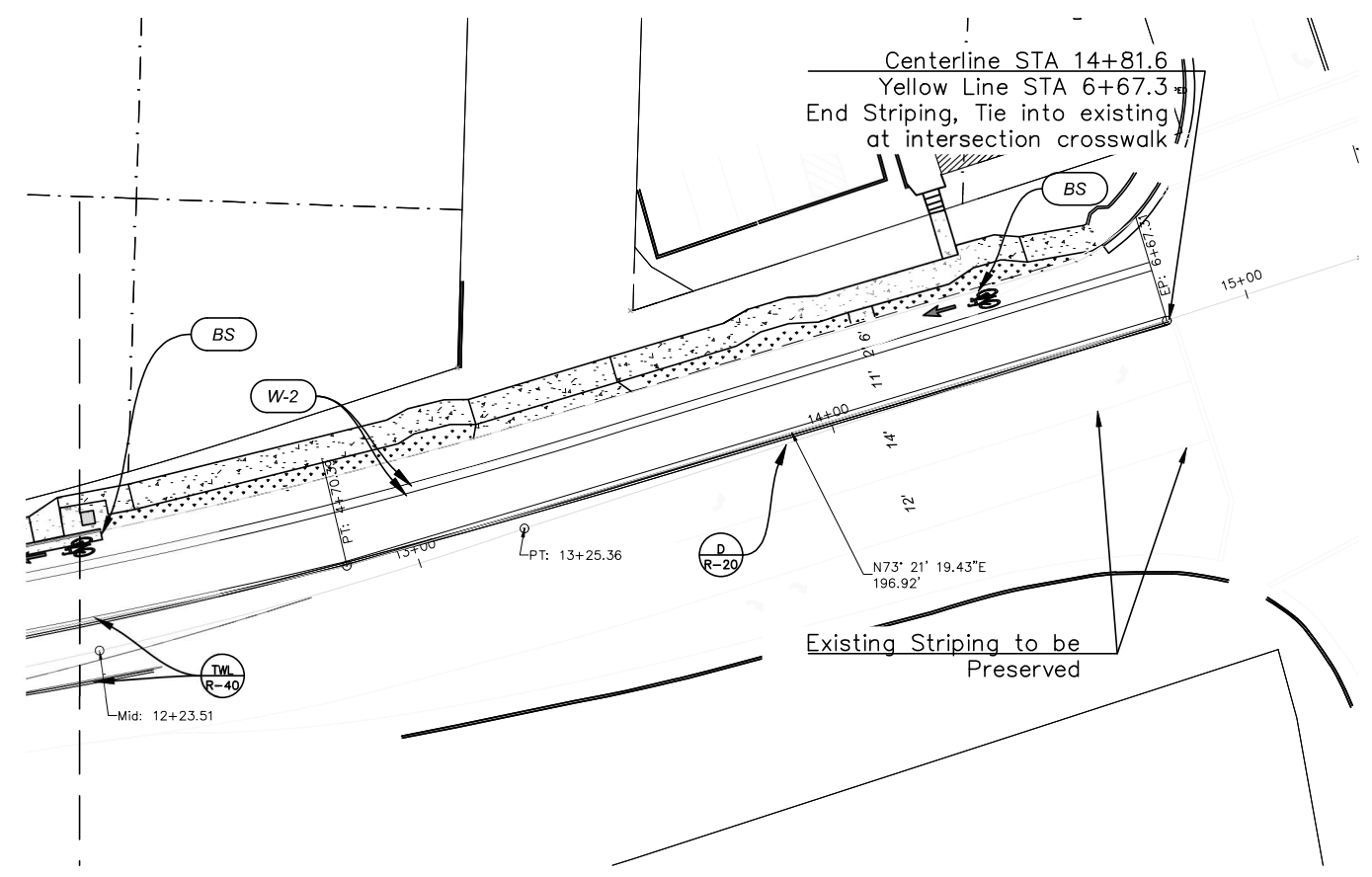
J:\engineering developer projects\0_ACTIVE\haic - 4125 n hwy 101\ODOT\city right-of-way improvements (off frontage)\9000\plans\CAD 3/17/2026

SCALE: 1" = 20'

4200 N HWY IMPROVEMENTS - C400B - STRIPING NOTES



- W-2** 2- 4" WHITE LINE (2' BIKE BUFFER)
- TWL R-40** TWO-WAY LEFT TURN POSITIONING GUIDE REFLECTOR WITH 4" YELLOW LINE
- E-LA** ELONGATED LEFT TURN ARROW (WHITE)
- BS** BIKE LANE STANDARD STENCIL (WHITE)
- D R-20** DOUBLE NO-PASS POSITIONING GUIDE REFLECTORS WITH TWO 4" YELLOW LINES



GENERAL NOTES:

- 1) All work shall be done in accordance with ODOT standard specifications & applicable striping details. See Reference ODOT Standard Drawings: TM501, TM502, TM503, TM515, TM 517, TM521, TM530, TM531, TM539, TM560, and TM561 on C500 series.
- 2) Longitudinal striping to be installed via METHOD "Bb" (THERMOPLASTIC, SPRAYED, SURFACE, NON-PROFILED)
- 3) Legend pavement parkings shall be installed using Method "B" (PERFORMED, FUSED THERMOPLASTIC, NON-SKID)
- 4) All pavement marking shall be field verified prior to ordering and placement.

General Notes

OWNER: LINCOLN CITY
CITY OF LINCOLN CITY
801 SW HIGHWAY 101
PO BOX 50
LINCOLN CITY, OREGON 97367

CONTACT: TERRY CHAMBERLIN, P.E.
PHONE: 541.996.1292

No.	Revision/Issue	Date

LINCOLN CITY PUBLIC WORKS
801 S.W. HWY 101
P.O. BOX 50
LINCOLN CITY, OREGON 97367
PHONE: (541) 996-2154
FAX: (541) 994-4881
www.lincolncity.org

Project Name and Sheet Name

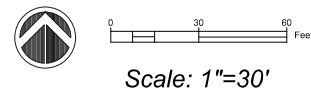
4200 N HWY IMPROVEMENTS
C400B - Striping Notes

DESIGNED BY: DW
PREPARED BY: DW

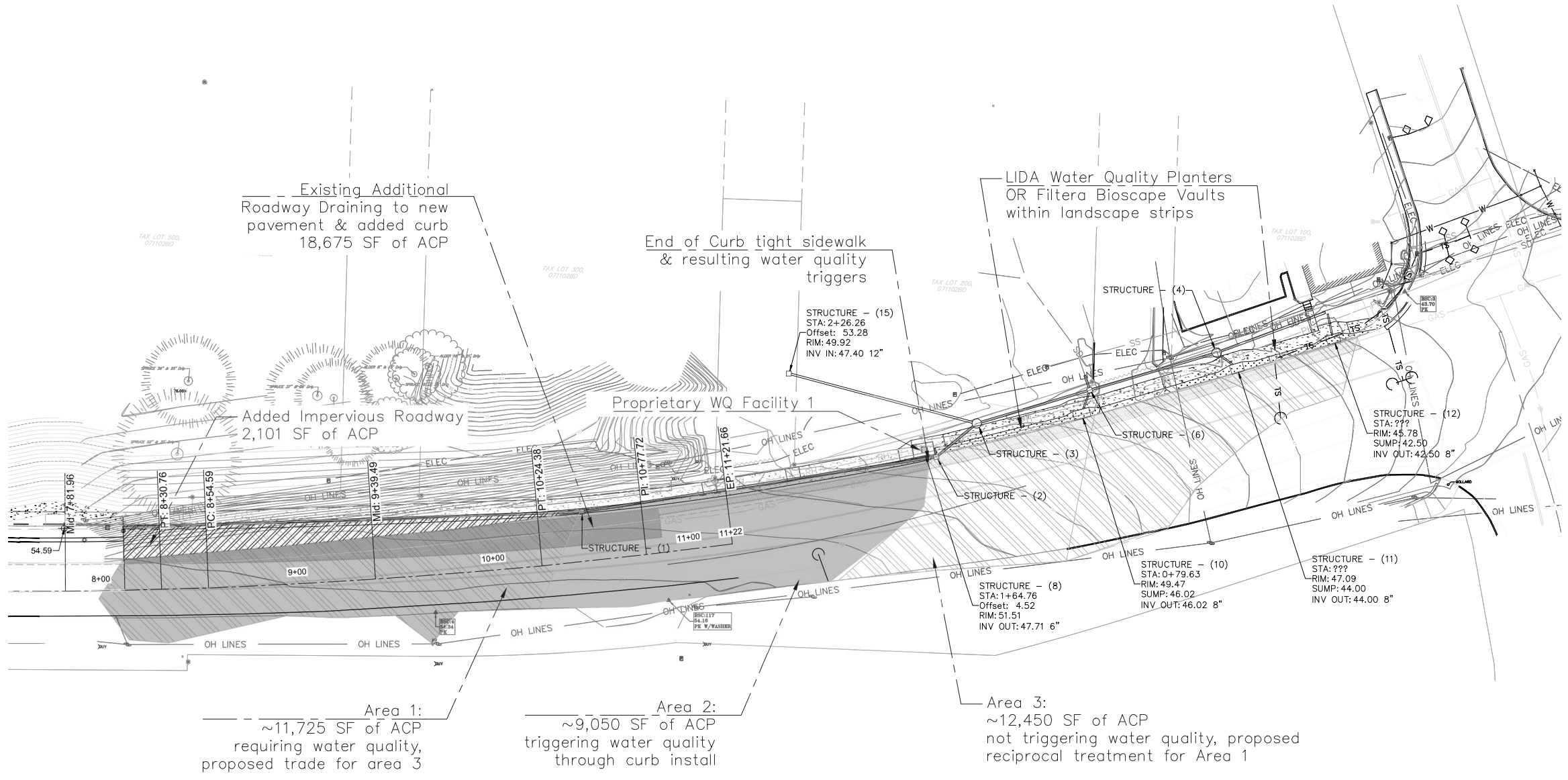
Project No. 24032	Sheet No. 6 of 15
Date 3/17/2026	
Scale As Noted <small>IF LESS THAN FULL SIZE, NTS</small>	

J:\engineering developer projects\0_ACTIVE\halc - 4125 n hwy 101\ODOT\city right-of-way improvements (off frontage)\909\plans\CAD

12/9/2025



4200 N HWY IMPROVEMENTS - C600 - STORMWATER OVERVIEW



Water Quality Summary:

2,100 SF of new impervious area is being added, triggering water quality requirements. Curb tight sidewalk is being added along existing pavement, trigger water quality for the superelevated portion of roadway draining to the new curb line. This totals ~18,675 SF of impervious area. This totals 20,775 SF of area requiring water quality,

Area 1, 11,725 SF of area, poses difficulty in fitting the required water quality facilities within the available right-of-way. - The limited right-of-way and steep bank behind the sidewalk on private property do not allow for placement of water quality facilities outside of a filter cartridge style water-quality structure. - Lincoln City, who adopts management of these water quality facilities is not set-up to maintain this style of facility.

Area 3, 12,450 SF of impervious area, is being proposed as a reciprocal trade. - In lieu of providing water quality for Area 1. Area 3, not otherwise requiring water quality treatment, will be provided with the water quality for 50% of the 2-year 24-hour rain event.

Rational Method Facility Sizing:

- Area 2
C=0.95
 $i = 2.1 \text{ in/hour (4.2 in/hour * 0.5)}$
A = 0.20776 acres (9,500 SF)
Q = .4145 cfs
- Area 3a
C=0.95
 $i = 2.1 \text{ in/hour (4.2 in/hour * 0.5)}$
A = 0.13453 acres (5,860 SF)
Q = 0.2684 cfs
- Area 3b
C=0.95
 $i = 2.1 \text{ in/hour (4.2 in/hour * 0.5)}$
A = 0.15129 acres (6,590 SF)
Q = 0.3018 cfs

General Notes

OWNER: LINCOLN CITY
CITY OF LINCOLN CITY
801 SW HIGHWAY 101
PO BOX 50
LINCOLN CITY, OREGON 97367

CONTACT: TERRY CHAMBERLIN, P.E.
PHONE: 541.996.1292

No.	Revision/Issue	Date

LINCOLN CITY PUBLIC WORKS
801 S.W. HWY 101
P.O. BOX 50
LINCOLN CITY, OREGON 97367
PHONE: (541) 996-2154
FAX: (541) 994-4881
www.lincolncity.org

Project Name and Sheet Name

4200 N HWY IMPROVEMENTS
C600 - Stormwater Overview

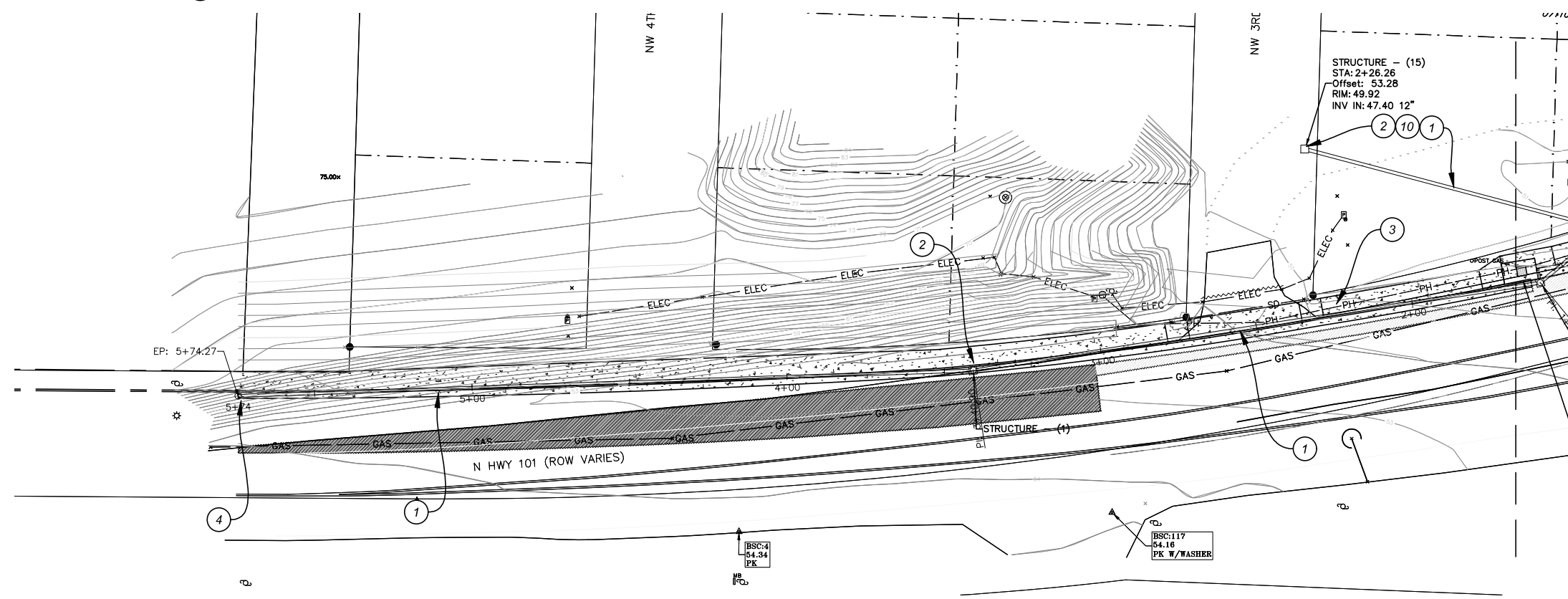
DESIGNED BY: DW
PREPARED BY: DW

Project No.: 24032	Sheet No.:
Date: 12/9/2025	7 of 15
Scale: As Noted IF LESS THAN FULL SIZE, NTS	

J:\engineering developer projects\ACTIVE\haic - 4125 n hwy 101\ODOT\city right-of-way improvements (off frontage)\901

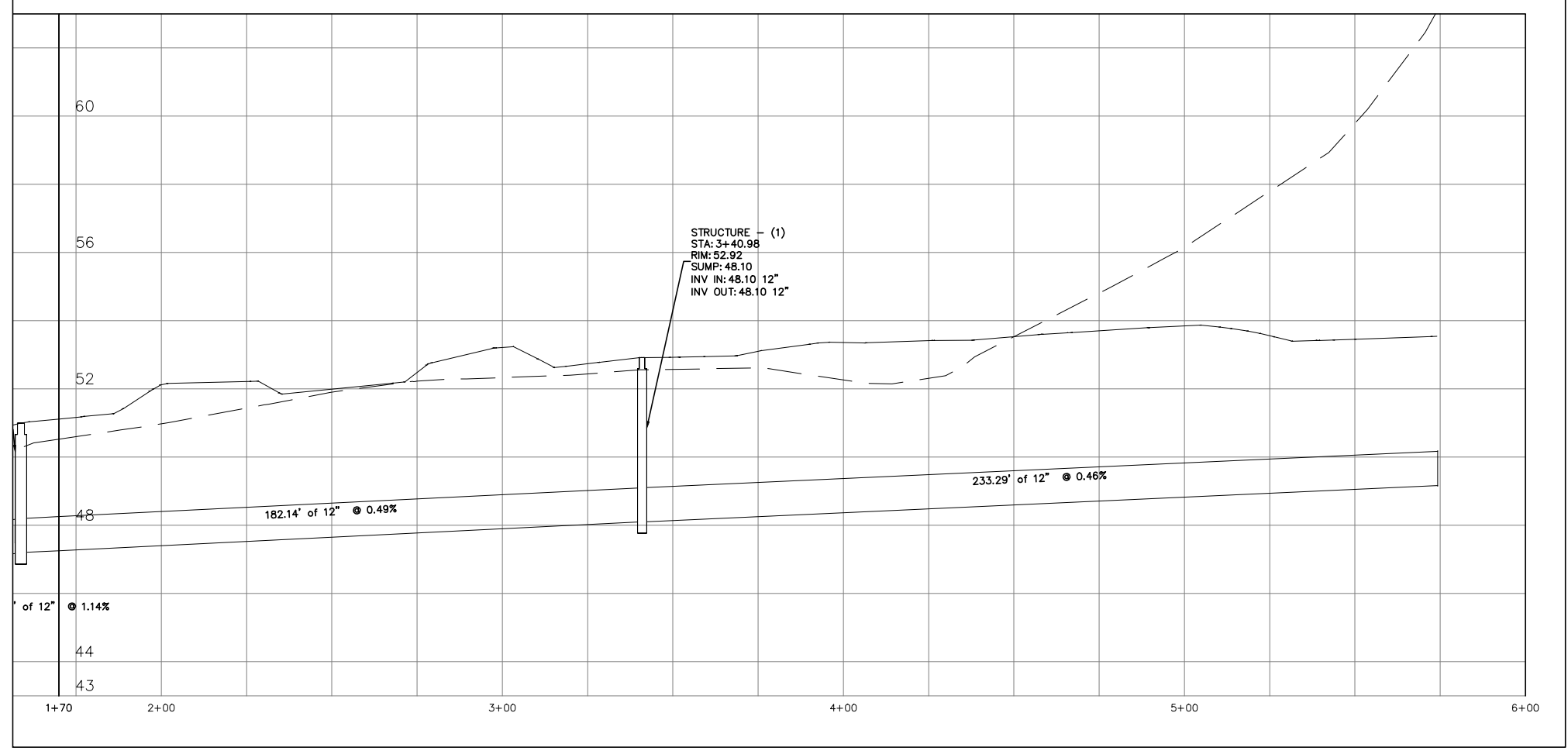
Scale: 1"=20'

4200 N HWY IMPROVEMENTS - C601A - STORMWATER CONSTRUCTION 1



- 1 INSTALL 12" PVC 3034 STORM LINE PER ODOT RD300
- 2 INSTALL G2 CATCH BASIN PER RD364
- 3 PRESERVE EXISTING UTILITY
- 4 STORM LINE TO CONTINUE CONNECT TO ADJACENT IMPROVEMENT
- 10 FIELD VERIFY LOW POINT ON PROPERTY. INSTALL NEW 12" AND G2 BASIN, FIELD ADJUST RIM ELEV. EST. 100' OF 12" 3034

Storm Pipe Alignment - (1) PROFILE



General Notes

OWNER: LINCOLN CITY
CITY OF LINCOLN CITY
801 SW HIGHWAY 101
PO BOX 50
LINCOLN CITY, OREGON 97367

CONTACT: TERRY CHAMBERLIN, P.E.
PHONE: 541.996.1292

REGISTERED PROFESSIONAL ENGINEER

Digitally Signed

OREGON

NOVEMBER 14, 2025

Dante E. Wentz

EXPIRES: 06/30/2028

No.	Revision/Issue	Date

LINCOLN CITY PUBLIC WORKS
801 S.W. HWY 101
P.O. BOX 50
LINCOLN CITY, OREGON 97367
PHONE: (541) 996-2154
FAX: (541) 994-4881
www.lincolncity.org

Project Name and Sheet Name

4200 N HWY IMPROVEMENTS
C601A - Stormwater Construction 1

DESIGNED BY: DW
PREPARED BY: DW

Project No.: 24032	Sheet No.:
Date: 12/9/2025	8 OF 15
Scale: As Noted <small>IF LESS THAN FULL SIZE, NTS</small>	

12/9/2025

J:\engineering developer projects\ACTIVE\haic 4125 n hwy 101\ODOT\city right-of-way improvements (off-frontage) 9071 plans\CAD 3/17/2026

4200 N HWY IMPROVEMENTS - C503 - DETAILS

GENERAL NOTES FOR ALL DETAILS ON THIS SHEET:

- Curb exposure "C", "E" or "F" as measured vertically from finished to highest point on curb. Vary as shown on plans or as directed. O.D.O.T. standard "H"-16.
- Consist. curb expansion joints at 200' maximum spacing, and at points of tangency, and at ends of each driveway.
- Consist. curb contraction joints at 15' maximum spacing, and at ends of each inlet and curb ramp.
- Transitions shall be used to connect curbs of different exposures. "C" is the total vertical dimension of those curb surfaces having a slope of 1% or steeper. Minimum desirable transition length shall be 20' for each 1" difference in "C".
- Top of all curbs shall slope toward the roadway at 1.5% max. (Max. 2.0% finished surface slope), unless otherwise shown, or as directed.
- Dimensions are nominal, vary to conform with curb machine approved by engineer.
- Dimensions adjacent to radii are measured to the points of intersection of curb surfaces.
- For sidewalk details, and monolithic curb & sidewalk, see Std. Dwg. RD720 & RD721.
- For drainage details, see Std. Dwg. RD700 series.
- On or along state highways, curb and gutter is required at curb ramp.

LEGEND:

- Sidewalk
- Driveway pay limit (See project plans for details not shown)
- Cross slope 1.5% max. (Max. 2.0% finished surface slope) (Normal sidewalk cross slope)
- Running slope 7.5% max. (Max. 8.3% finished surface slope)
- W Width of driveway
- K Buffer strip width (5' normal, 3' min.)
- E Curb exposure
- 7.0' in commercial land use types
- 3.5' in residential land use types

OREGON STANDARD DRAWINGS
CURBS
 DATE: 2024
 REVISION DESCRIPTION:
 RD700
 Effective Date: December 1, 2024 - May 31, 2025

GENERAL NOTES FOR ALL DETAILS ON THIS SHEET:

- Include additional paved or unpaved 2' shy distance to vertical faces higher than 5' such as retaining walls, sound walls, fences and buildings.
- Curb type and sidewalk width as shown on plans or as directed.
- On sidewalks 8' and wider, provide a longitudinal joint at the midpoint.
- Install 3" PVC weep hole pipes in sidewalks where shown on plans, and allowed by jurisdiction. Place contraction joints over top of pipes. See Std. Dwg. RD700 for weep hole details.
- Provide expansion joints around poles, posts, boxes, at ends of each driveway, and other features which penetrate through or against the structures.
- For sidewalk, monolithic curb & sidewalk, const. expansion joints at 45' maximum spacing. See Std. Dwg. RD722 for expansion joints details.
- Consist. contraction joints at 15' maximum spacing, and at ends of each curb ramp. See Std. Dwg. RD722 for contraction joints details.
- For curb details, see Std. Dwg. RD700 & RD701.
- Sidewalk details are based on applicable ODOT standards.
- Fully lowered sidewalk shown; see project plans for the driveway design type/level. For driveway details not shown, see Std. Dwg. RD725, RD730, RD735, RD740, RD745 & RD750.
- See project plans for details not shown.

LEGEND:

- Sidewalk pay limit.
- Driveway pay limit, varies by option. (See general note 8).
- Cross slope 1.5% max. (Max. 2.0% finished surface slope) (Normal sidewalk cross slope)

OREGON STANDARD DRAWINGS
CURB LINE SIDEWALKS
 DATE: 2024
 REVISION DESCRIPTION:
 RD720
 Effective Date: December 1, 2024 - May 31, 2025

GENERAL NOTES FOR ALL DETAILS ON THIS SHEET:

- Details are based on applicable ODOT Standards.
- Only use details allowed by jurisdiction.
- The following dimensions are as shown on plans, or as directed: driveway width, driveway slope, sidewalk width, buffer strip width, curb exposure, driveway lip exposure, landing area length and width. See project plans for details not shown.
- Curb, gutter, and sidewalk types vary, see plans. See Std. Dwg. RD700 & RD701 for curb details. See Std. Dwg. RD721 for sidewalk details. See Std. Dwg. RD722 for joint details.
- A greater than or equal to 4' unobstructed clear passage with a slope of 1.5% max. (Max. 2.0% finished surface slope) is required behind driveway apron. Sidewalk profile grade of the pedestrian accessible route shall not exceed the adjacent roadway profile grade.
- Where existing driveway is in good condition, and meets slope requirements, construct only as much landing area as required for satisfactory connection with new work.
- Check the gutter flow depth at driveway locations to assure that the design flood does not overflow the back of sidewalk at driveway. If overflowing occurs place an inlet at upstream side of driveway or perform other approved design mitigation.
- Construct a full depth expansion joint with 1/2" preformed joint filler at ends of each driveway. Tooled joints are required at all driveway slope break lines.
- 15' min. of the driveway behind the sidewalk should be surfaced to prevent tracking of gravel onto the sidewalk.

LEGEND:

- Sidewalk
- Driveway pay limit (See project plans for details not shown)
- Cross slope 1.5% max. (Max. 2.0% finished surface slope) (Normal sidewalk cross slope)
- Running slope 7.5% max. (Max. 8.3% finished surface slope)
- W Width of driveway
- K Buffer strip width (5' normal, 3' min.)
- E Curb exposure
- 7.0' in commercial land use types
- 3.5' in residential land use types

OREGON STANDARD DRAWINGS
SEPARATED SIDEWALK DRIVEWAYS OR ALLEYS (OPTIONS A, B & C)
 DATE: 2024
 REVISION DESCRIPTION:
 RD725
 Effective Date: December 1, 2024 - May 31, 2025

GENERAL NOTES FOR ALL DETAILS ON THIS SHEET:

- Details are based on applicable ODOT Standards.
- Only use details allowed by jurisdiction.
- The following dimensions are as shown on plans, or as directed: driveway width, driveway slope, sidewalk width, curb exposure, driveway lip exposure, landing area length and width. See project plans for details not shown.
- Curb, gutter, and sidewalk types vary, see plans. See Std. Dwg. RD700 & RD701 for curb details. See Std. Dwg. RD721 for sidewalk details. See Std. Dwg. RD722 for joint details.
- A greater than or equal to 4' unobstructed clear passage with a slope of 1.5% max. (Max. 2.0% finished surface slope) is required behind driveway apron. Sidewalk profile grade of the pedestrian accessible route shall not exceed the adjacent roadway profile grade.
- Where existing driveway is in good condition, and meets slope requirements, construct only as much landing area as required for satisfactory connection with new work.
- Check the gutter flow depth at driveway locations to assure that the design flood does not overflow the back of sidewalk at driveway. If overflowing occurs place an inlet at upstream side of driveway or perform other approved design mitigation.
- Construct a full depth expansion joint with 1/2" preformed joint filler at ends of each driveway. Tooled joints are required at all driveway slope break lines.
- 15' min. of the driveway behind the sidewalk should be surfaced to prevent tracking of gravel onto the sidewalk.
- Monolithic curb & sidewalk shall retain increased edge through lowered profile, to accommodate driveway use. See Std. Dwg. RD720 for details.

LEGEND:

- Sidewalk
- Driveway pay limit. (If monolithic, include adjacent curb) (See project plans for details not shown)
- Cross slope 1.5% max. (Max. 2.0% finished surface slope) (Normal sidewalk cross slope)
- Running slope 7.5% max. (Max. 8.3% finished surface slope)
- W Width of driveway
- E Curb exposure

OREGON STANDARD DRAWINGS
CURB LINE SIDEWALK DRIVEWAYS OR ALLEYS (OPTIONS F & G)
 DATE: 2024
 REVISION DESCRIPTION:
 RD735
 Effective Date: December 1, 2024 - May 31, 2025

General Notes
 OWNER: LINCOLN CITY
 CITY OF LINCOLN CITY
 801 SW HIGHWAY 101
 PO BOX 50
 LINCOLN CITY, OREGON 97367
 CONTACT: TERRY CHAMBERLIN, P.E.
 PHONE: 541.996.1292

REGISTERED PROFESSIONAL ENGINEER
 906151516
 Digitally Signed
 OREGON
 NOVEMBER 14, 2025
 Daniel E. Wentz
 EXPIRES: 06/30/2026

No.	Revision/Issue	Date

Lincoln City
 LINCOLN CITY PUBLIC WORKS
 801 S.W. HWY 101
 P.O. BOX 50
 LINCOLN CITY, OREGON 97367
 PHONE: (541) 996-2154
 FAX: (541) 994-4881
 www.lincolncity.org

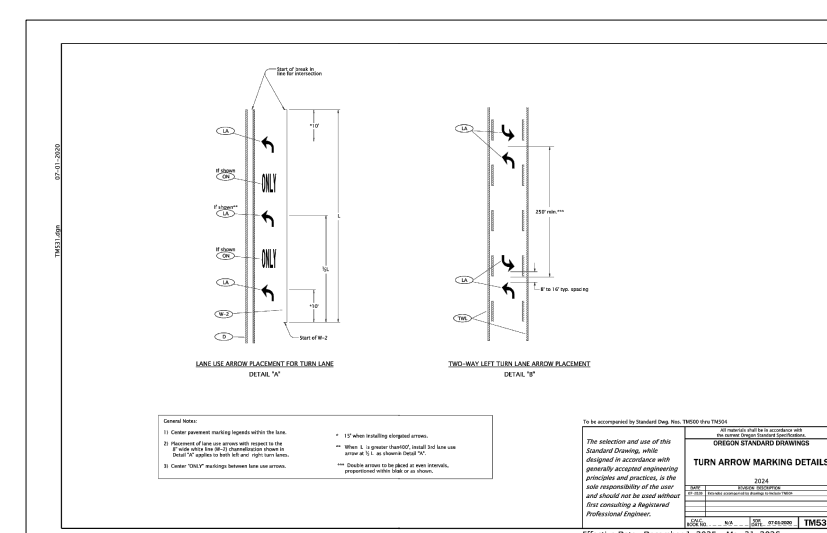
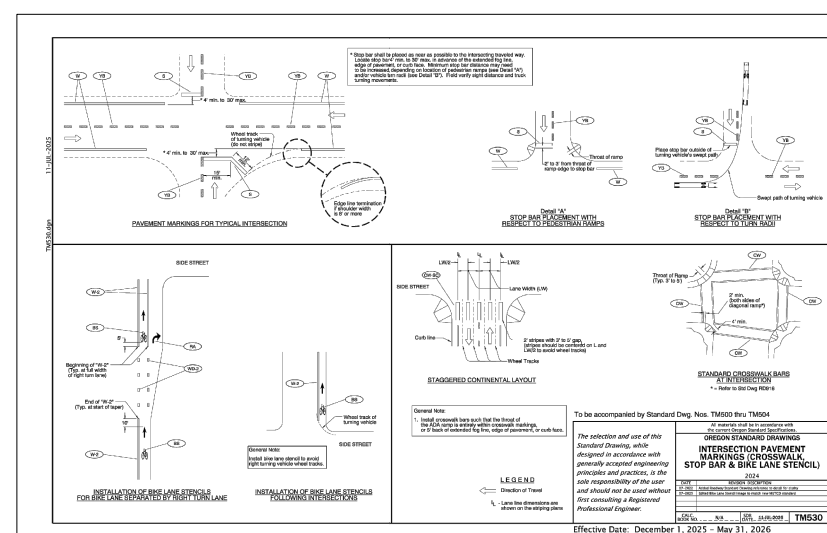
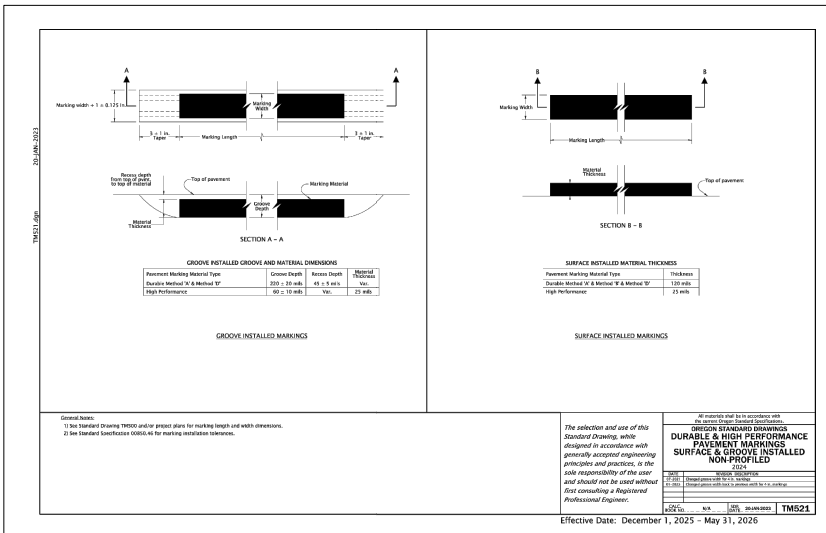
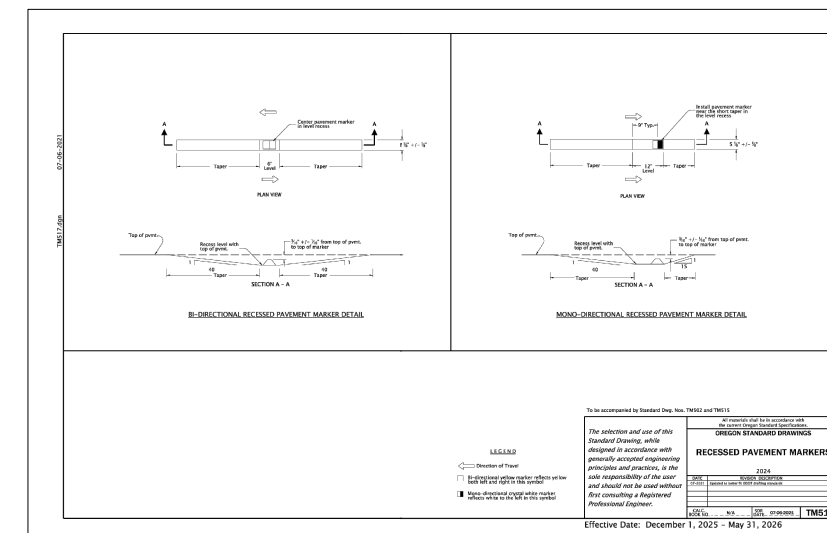
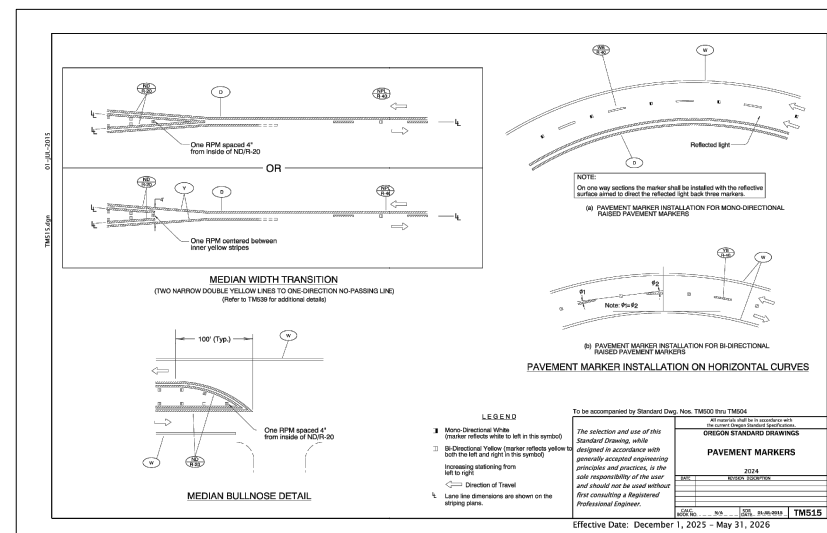
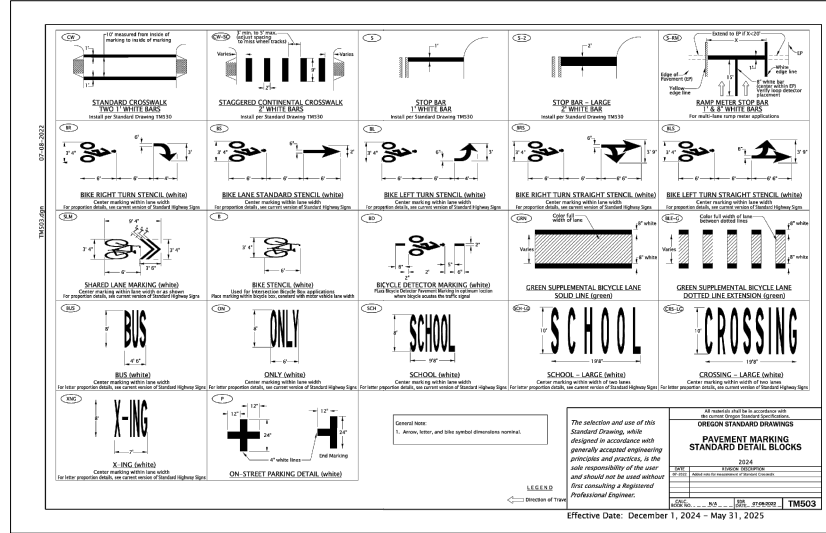
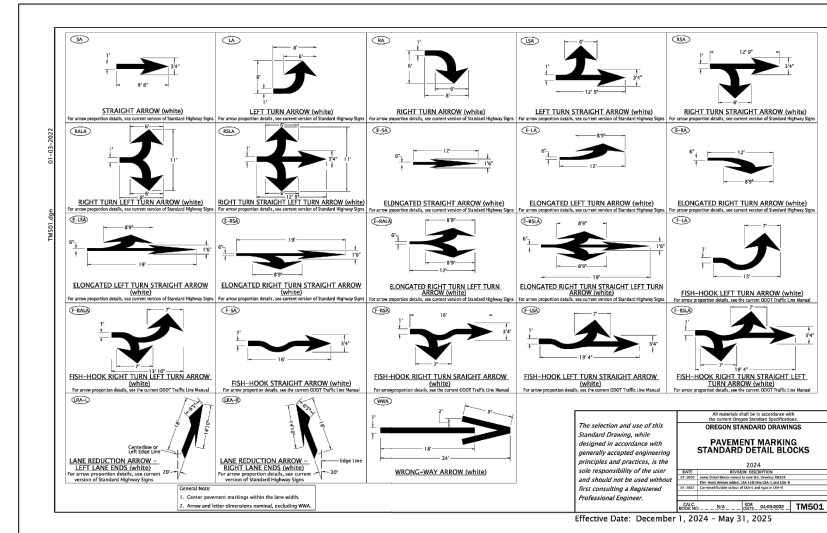
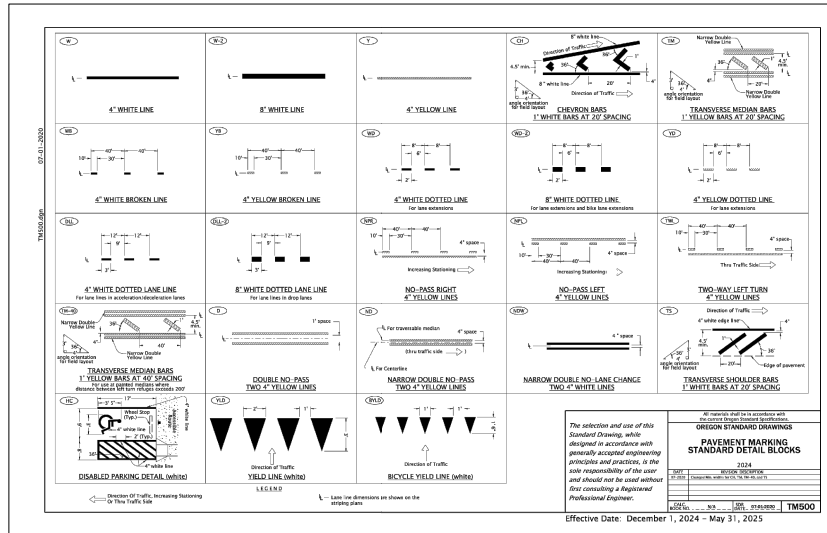
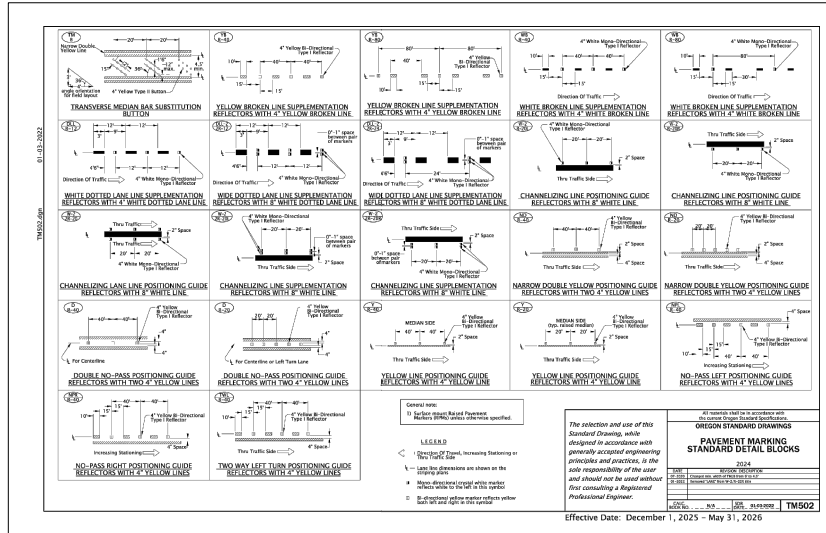
Project Name and Sheet Name
4200 N HWY IMPROVEMENTS
C503 - Details
 DESIGNED BY: DW
 PREPARED BY: DW

Project No.: 24032
 Date: 3/17/2026
 Scale: As Noted
 F. LESS THAN FULL SIZE, NTS

Sheet No.: 12 of 15

4200 N HWY IMPROVEMENTS - C504 - DETAILS

J:\engineering developer projects\0_ACTIVE\hlc - 4125 n hwy 101\ODOT\city right-of-way improvements (off frontage)\90% plans\CAD 3/17/2026



General Notes
OWNER: LINCOLN CITY
CITY OF LINCOLN CITY
801 SW HIGHWAY 101
PO BOX 50
LINCOLN CITY, OREGON 97367
CONTACT: TERRY CHAMBERLIN, P.E.
PHONE: 541.996.1292

No.	Revision/Issue	Date



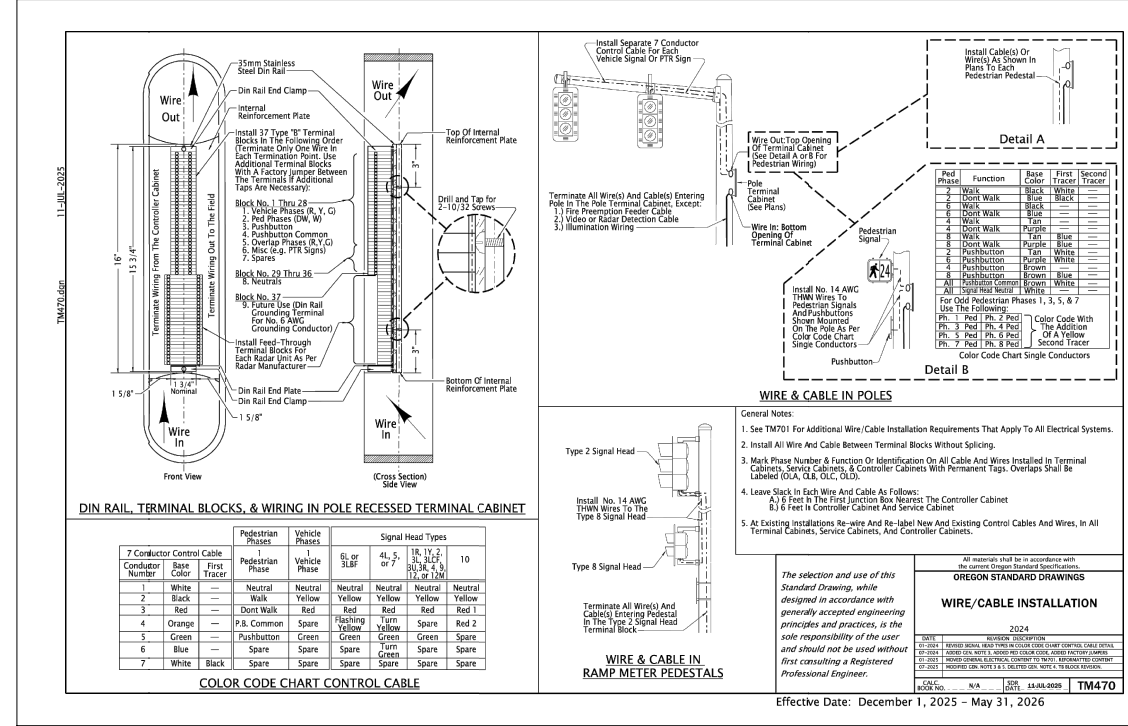
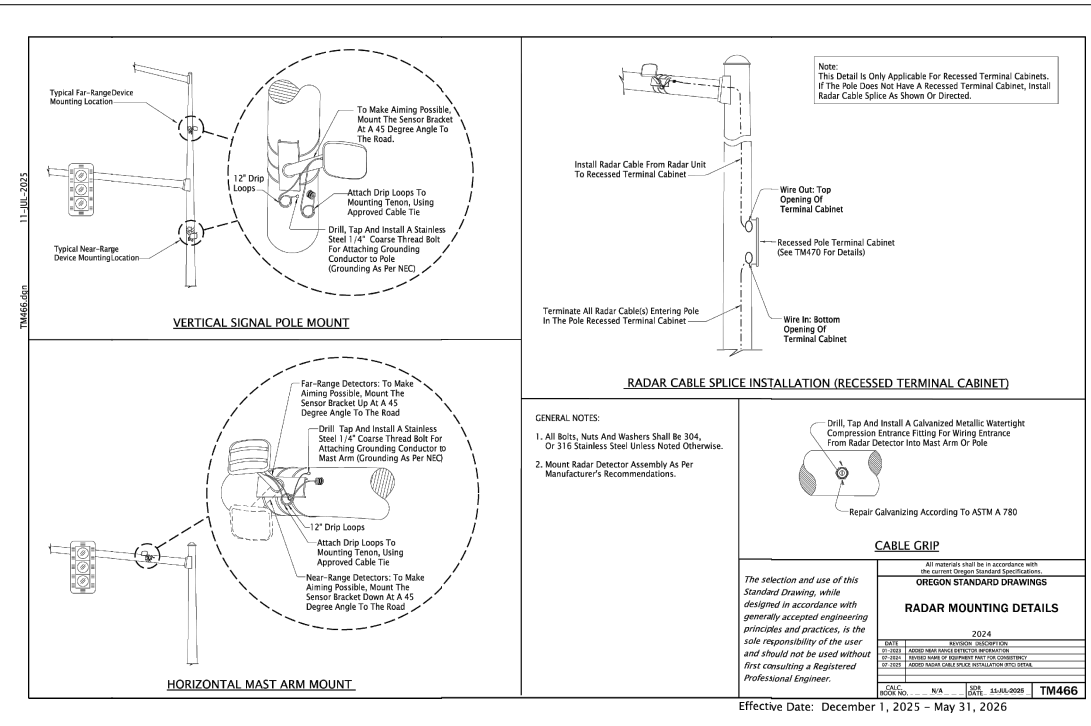
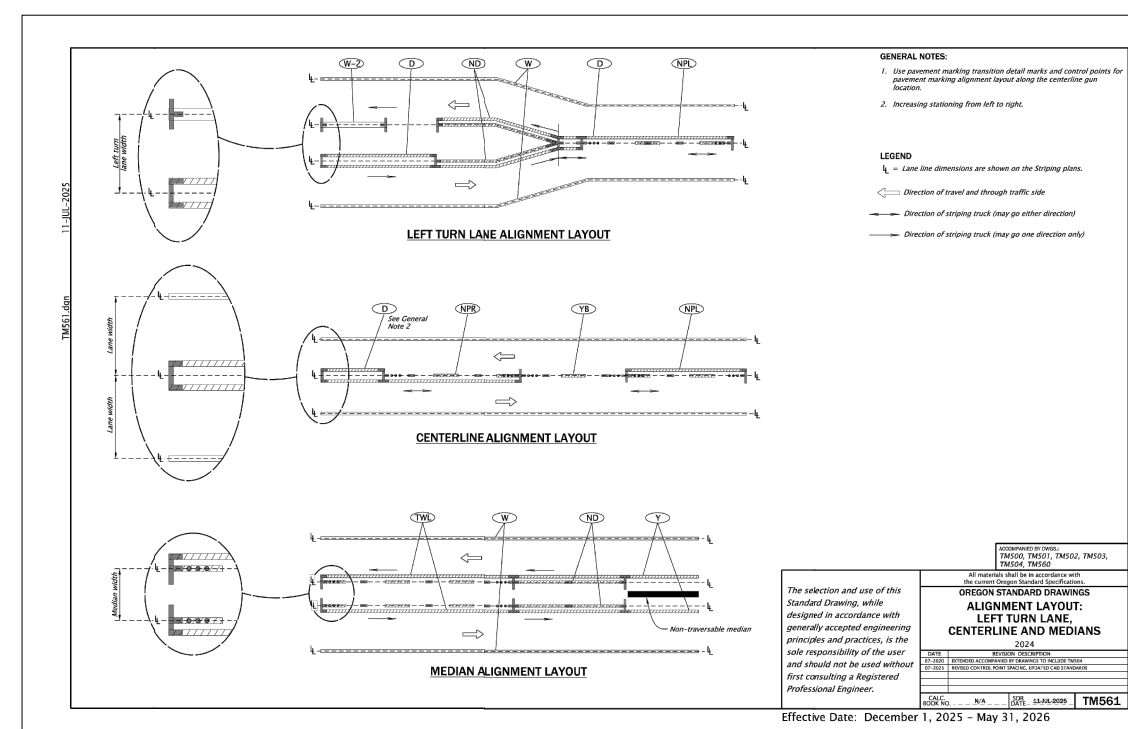
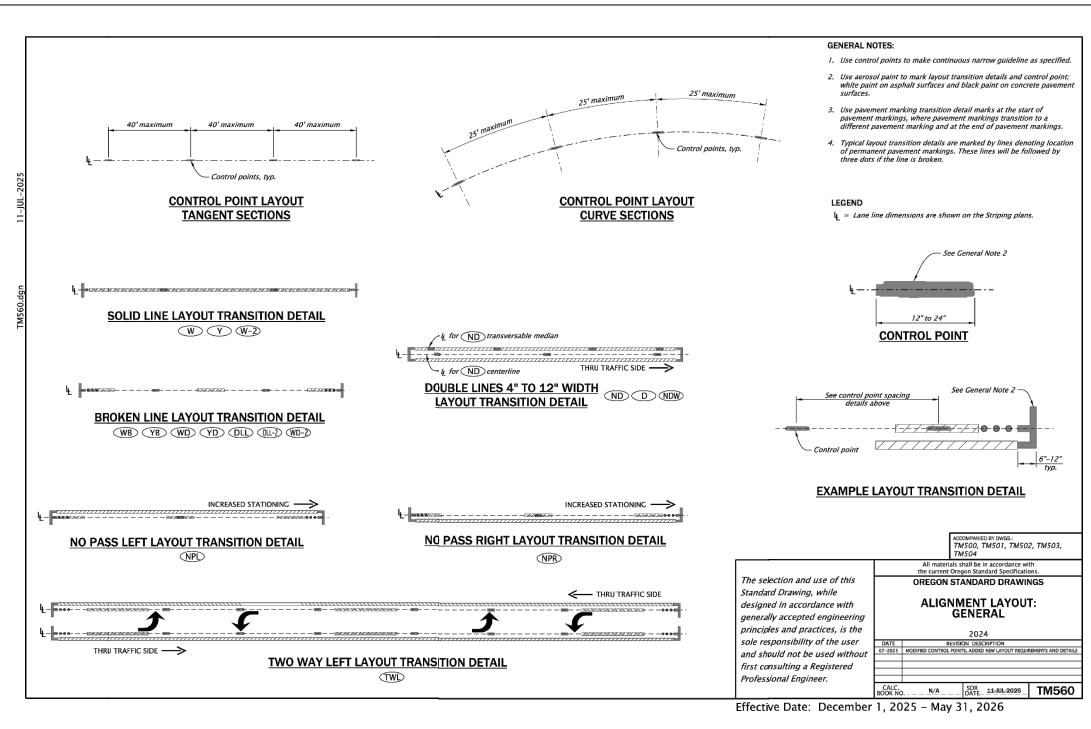
No.	Revision/Issue	Date

Lincoln City
LINCOLN CITY PUBLIC WORKS
801 S.W. HWY 101
P.O. BOX 50
LINCOLN CITY, OREGON 97367
PHONE: (541) 996-2154
FAX: (541) 994-4881
www.lincolncity.org

Project Name and Sheet Name
4200 N HWY IMPROVEMENTS
C504 - Details
DESIGNED BY: DW
PREPARED BY: DW

Project No. 24032
Date 3/17/2026
Scale As Noted
Sheet No. 13 of 15
F LESS THAN FULL SIZE, NTS

4200 N HWY IMPROVEMENTS - 14 C505 - DETAILS



General Notes
 OWNER: LINCOLN CITY
 CITY OF LINCOLN CITY
 801 SW HIGHWAY 101
 PO BOX 50
 LINCOLN CITY, OREGON 97367
 CONTACT: TERRY CHAMBERLIN, P.E.
 PHONE: 541.996.1292

REGISTERED PROFESSIONAL ENGINEER
 Digitally Signed
 DANIEL E. WENTZ
 EXPIRES: 06/30/2026

No.	Revision/Issue	Date

Lincoln City
 LINCOLN CITY PUBLIC WORKS
 801 S.W. HWY 101
 P.O. BOX 50
 LINCOLN CITY, OREGON 97367
 PHONE: (541) 996-2154
 FAX: (541) 994-4881
 www.lincolncity.org

Project Name and Sheet Name
4200 N HWY IMPROVEMENTS
 14 C505 - Details
 DESIGNED BY: DW
 PREPARED BY: DW

Project No.: 24032
 Date: 3/17/2026
 Scale: As Noted
 Sheet No.: 14 of 15
 F. LESS THAN FULL SIZE, NTS

J:\engineering developer projects\ACTIVE\haic-4125 n hwy 101\DDP\city right-of-way improvements (off-frontage) 1991 plans\CAD 3/17/2026

4200 N HWY IMPROVEMENTS - C506 - DETAILS

Engineering developer projects - ACTIVE - 4125 n hwy 101 - 0001 - city right of way improvements (off-frontage) - 9/17/2026

SECTION A-A1 THROAT INLET (T)

SECTION B-B

STANDARD CURB INLET DETAIL

SECTION A-A2 PIPE INLET (P)

FT CONFIGURATION (OPTIONS: THROAT INLET "T", PIPE INLET "P")						
VAULT SIZE (L x W)	MEDIA AREA (SF)	LONG SIDE INLET DESIG. / PART NO.	SHORT SIDE INLET DESIG. / PART NO.	AVAILABILITY	OUTLET PIPE DIA.	MIN. NO. OF INLET PIPES (-P ONLY)
4 x 4	15	FT0404	FT0404	ALL	4" SDR 35	1
6 x 4	24	FT0604	FT0406	ALL	4" SDR 35	1
8 x 4	32	FT0804	FT0408	ALL	4" SDR 35	1
7.83 x 4.5	35	FT0804S	FT0408S	DEMO/ALPHA/VA.WV ONLY	4" SDR 35	1
6 x 6	36	FT0606	FT0606	ALL	4" SDR 35	1
8 x 6	48	FT0806	FT0608	ALL	4" SDR 35	1
10 x 6	60	FT1006	FT0610	ALL	6" SDR 35	2
8 x 8	64	FT0808	FT0808	CA, TX ONLY	6" SDR 35	2
12 x 6	72	FT1206	FT0612	ALL	6" SDR 35	2
10 x 8	80	FT1008	FT0810	CA, TX ONLY	6" SDR 35	2
13 x 7	91	FT1307	FT0713	ALL	6" SDR 35	2
12 x 8	96	FT1208	FT0812	CA, TX ONLY	6" SDR 35	2
14 x 8	112	FT1408	ALL	ALL	6" SDR 35	3
18 x 8	144	FT1808	N/A	ALL	6" SDR 35	3
15 x 9	135	FT1509	N/A	OR/WA ONLY	6" SDR 35	3
18 x 9	162	FT1809	N/A	CALL CONTECH	6" SDR 35	3
20 x 8	160	FT2008	N/A	CALL CONTECH	6" SDR 35	4
22 x 8	176	FT2208	N/A	CALL CONTECH	6" SDR 35	4

SECTION A-A SLOTTED THROAT INLET - TOP EXTENDS 4" ABOVE CURB FOR ADJACENT SIDEWALKS (-T)

SECTION A-A' GREEN INFRASTRUCTURE INLET - TOP FLUSH WITH TOP OF CURB, NOT INTENDED FOR SIDEWALK APPLICATIONS (-I)

SECTION A-A'' BASIN - CURB INLET OR PIPE INLETS OPTIONAL (-B)

FTBSVB CONFIGURATION (OPTIONS: BASIN "B", GREEN INFRASTRUCTURE (GI) INLET "I", PIPE INLET "P", SLOTTED THROAT INLET "T")						
VAULT SIZE (L x W)	MEDIA AREA (SF)	LONG SIDE INLET DESIG. / PART NO.	SHORT SIDE INLET DESIG. / PART NO.	AVAILABILITY	MAX. OUTLET / BYPASS PIPE DIA.	MIN. NO. OF INLET PIPES (-P ONLY)
4 x 4	15	FTBSVB04	FTBSVB04	ALL	6" SDR 35	1
6 x 4	24	FTBSVB04	FTBSVB04	ALL	6" SDR 35	1
8 x 4	32	FTBSVB04	FTBSVB04	ALL	6" SDR 35	1
7.83 x 4.5	35	FTBSVB04S	FTBSVB04S	DEMO/ALPHA/VA.WV ONLY	6" SDR 35	1
6 x 6	36	FTBSVB06	FTBSVB06	ALL	6" SDR 35	1
8 x 6	48	FTBSVB06	FTBSVB06	ALL	6" SDR 35	1
10 x 6	60	FTBSVB06	FTBSVB06	ALL	6" SDR 35	2
8 x 8	64	FTBSVB08	FTBSVB08	ALL	6" SDR 35	2
12 x 6	72	FTBSVB06	FTBSVB06	ALL	6" SDR 35	2
10 x 8	80	FTBSVB08	FTBSVB08	ALL	6" SDR 35	2
13 x 7	91	FTBSVB07	FTBSVB07	ALL	6" SDR 35	2
12 x 8	96	FTBSVB08	FTBSVB08	ALL	6" SDR 35	2
14 x 8	112	FTBSVB08	FTBSVB08	ALL	6" SDR 35	3
18 x 8	144	FTBSVB08	FTBSVB08	ALL	6" SDR 35	3
15 x 9	135	FTBSVB09	FTBSVB09	ALL	6" SDR 35	3
18 x 9	162	FTBSVB09	FTBSVB09	ALL	6" SDR 35	3
20 x 8	160	FTBSVB08	FTBSVB08	ALL	6" SDR 35	4
22 x 8	176	FTBSVB08	FTBSVB08	ALL	6" SDR 35	4

STREET CUT

GENERAL NOTES FOR ALL DETAILS ON THIS SHEET:

- All existing AC or PCC pavement shall be sawcut prior to repairing.
- Concrete pavement shall be replaced with concrete to a minimum thickness of 8" or to the thickness of removed pavement, whichever is greater.
- For joining new concrete to existing concrete, see contract plans for specific details.
- Place AC mix minimum 1/2" of 6" or the thinn. of the removed pavement, whichever is greater. Compact as specified.

Effective Date: December 1, 2024 - May 31, 2025

METHOD A

METHOD B

METHOD OF FEATHERING ACP PAVEMENT AT GRAVEL APPROACHES

METHOD OF MATCHING EXTG. ACP INLAY SURFACING

Effective Date: December 1, 2024 - May 31, 2025

General Notes

OWNER: LINCOLN CITY
CITY OF LINCOLN CITY
801 SW HIGHWAY 101
PO BOX 50
LINCOLN CITY, OREGON 97367

CONTACT: TERRY CHAMBERLIN, P.E.
PHONE: 541.996.1292



No.	Revision/Issue	Date

Project Name and Sheet Name
4200 N HWY IMPROVEMENTS
C506 - Details

DESIGNED BY: DW
PREPARED BY: DW

Project No.: 24032
Date: 3/17/2026
Scale: As Noted
Sheet No.: 15 of 15