

NARRATIVE:

--THIS SURVEY WAS COMPLETED AT THE REQUEST OF ANTHONY BUZZARD TO MARK AND MONUMENT A PROPOSED PROPERTY LINE ADJUSTMENT BETWEEN LOTS 5 & 7, BLOCK 9, THIRD ADDITION TO CITY OF TAFT, LINCOLN COUNTY SURVEY RECORDS. THE NEW LINE WAS ESTABLISHED AT THE LOCATION SHOWN PER THE REQUEST OF OUR CLIENT.

--THE BASIS OF BEARINGS IS OREGON COORDINATE REFERENCE SYSTEM OREGON COAST ZONE, NAD83 (2011) EPOCH 2010.00. DISTANCES SHOWN ARE GROUND DISTANCES.

--FOR CONTROL I HELD THE MONUMENTS AS NOTED IN THE MONUMENT NOTES.

LOT 5-7 RESOLUTION

--I CALCULATED THE CENTERLINES BASED ON COORDINATE VALUES AS PUBLISHED ON CS NO. 16191 AND O.S.H.D. 10B-15-5 AND ROTATED THEM TO OREGON COORDINATE REFERENCE SYSTEM OREGON COAST ZONE, BETWEEN MONUMENT NO. 1000 & MONUMENT NO. 1008 OF SW FLEET AVE, SW 50TH STREET, SW 48TH STREET, AND HIGHWAY 101. I THEN CALCULATED LOTS 5, 7, & 8 USING THE PLAT OF THIRD ADDITION TO CITY OF TAFT HOLDING THE PLATTED DISTANCES. THE RECORD DATA FROM O.S.H.D. 10B-15-5 HAS BEEN CONVERTED FROM METERS T

MONUMENT NOTES:

[1000] FOUND A 5/8" IRON ROD PER THIRD ADDITION TO CITY OF TAFT, (HELD)

[1007] FOUND A 5/8" IRON ROD WITH A Y.P.C. MARKED "FERGUSON PLS 2279" PER CS NO. 17703, (HELD)

[1008] FOUND A 1" BRASS DISK MARKED "ODOT PLS 2230", ORIGIN UNKNOWN, (HELD)

REFERENCES:

SURVEYS

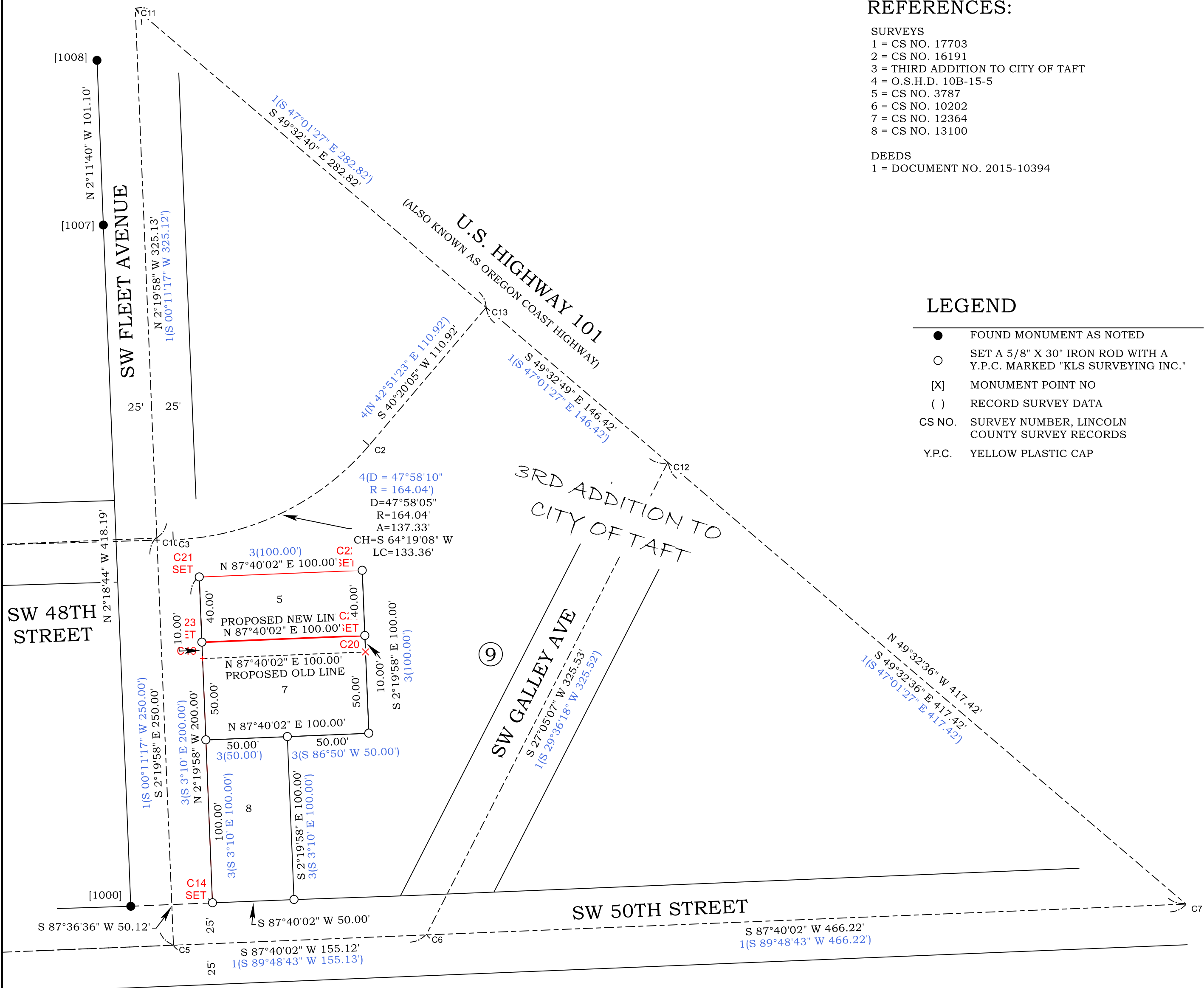
- 1 = CS NO. 17703
- 2 = CS NO. 16191
- 3 = THIRD ADDITION TO CITY OF TAFT
- 4 = O.S.H.D. 10B-15-5
- 5 = CS NO. 3787
- 6 = CS NO. 10202
- 7 = CS NO. 12364
- 8 = CS NO. 13100

DEEDS

- 1 = DOCUMENT NO. 2015-10394

LEGEND

- FOUND MONUMENT AS NOTED
- SET A 5/8" X 30" IRON ROD WITH A Y.P.C. MARKED "KLS SURVEYING INC."
- [X] MONUMENT POINT NO
- () RECORD SURVEY DATA
- CS NO. SURVEY NUMBER, LINCOLN COUNTY SURVEY RECORDS
- Y.P.C. YELLOW PLASTIC CAP



REGISTERED PROFESSIONAL LAND SURVEYOR

PRELIMINARY

OREGON
JANUARY 19, 1993
DONALD D WALLACE, JR
2601
RENEWS 6/30/26

K L S SURVEYING INC.
1224 ALDER STREET
VERNONIA, OREGON 97064
(503) 429-6115

PROPOSED PROPERTY LINE ADJUSTMENT SURVEY FOR
ANTHONY BUZZARD
LOTS 5, 7, & 8, BLOCK 9,
THIRD ADDITION TO CITY OF TAFT,
IN THE SE 1/4 OF SECTION 27,
T7S, R11W, W.M.,
LINCOLN COUNTY, OREGON
SEPTEMBER 10, 2024

DRAWN BY: ORM
FIELD: SWMJR/CAM
EQUIPMENT: NOMAD/NIKON
JOB No. 24-157
DRAWING NAME: 24-157 ROS
REVISED: 10-18-2024