

Élan Cité

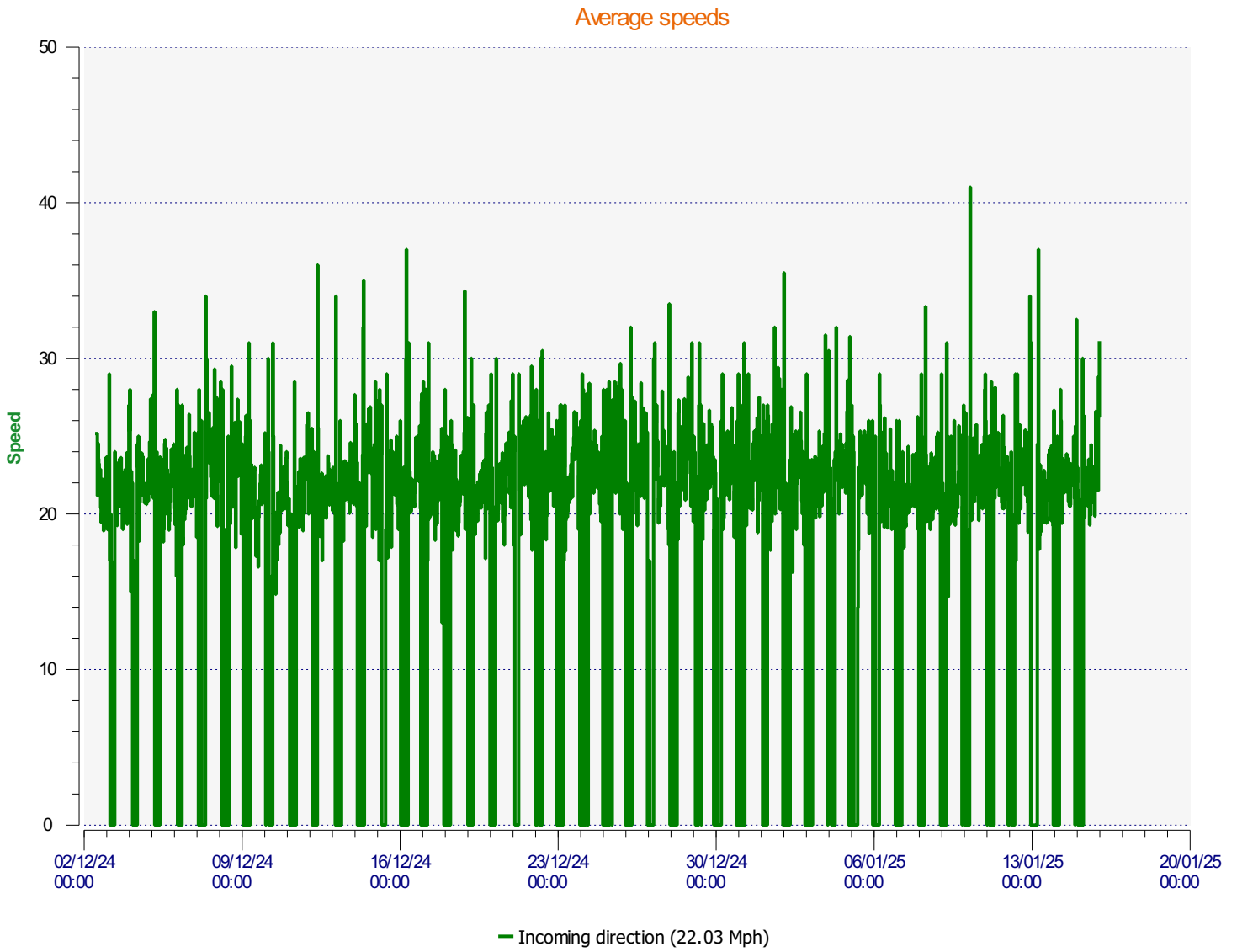


DÉTECTER • INFORMER • SÉCURISER

Start date: Monday, December 2, 2024 1:30 PM
End date: Wednesday, January 15, 2025 11:30 PM

Location:

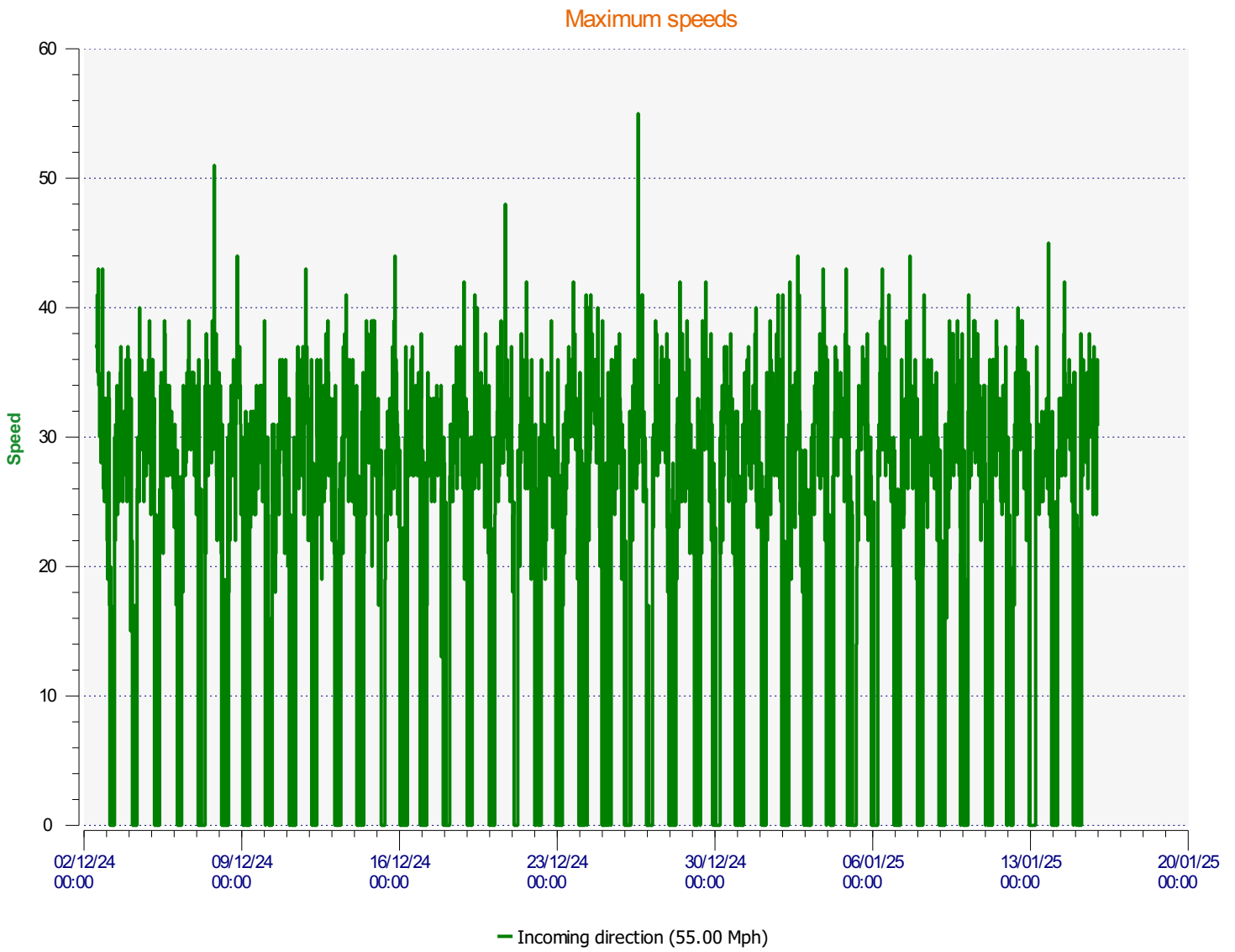
Comments:



Start date: Monday, December 2, 2024 1:30 PM
End date: Wednesday, January 15, 2025 11:30 PM

Location:

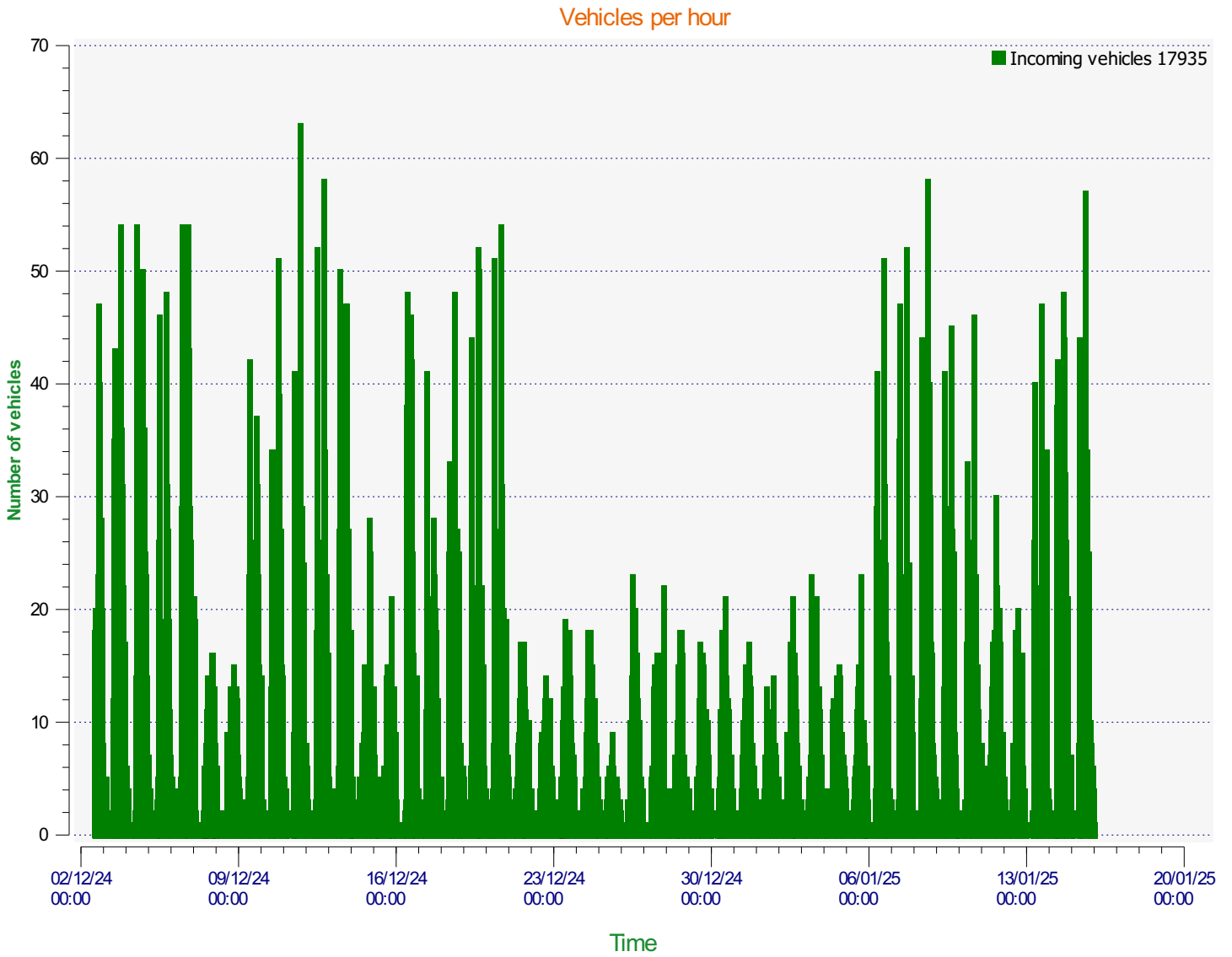
Comments:



Start date: Monday, December 2, 2024 1:30 PM
End date: Wednesday, January 15, 2025 11:30 PM

Location:

Comments:

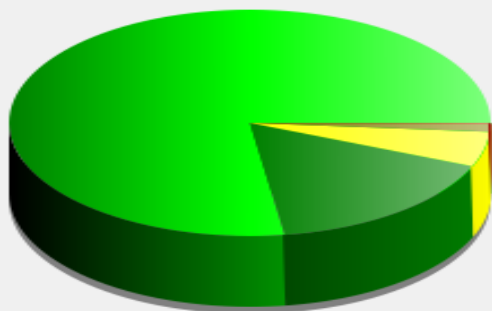


Start date: Monday, December 2, 2024 1:30 PM
End date: Wednesday, January 15, 2025 11:30 PM

Location:

Comments:

Incoming vehicles

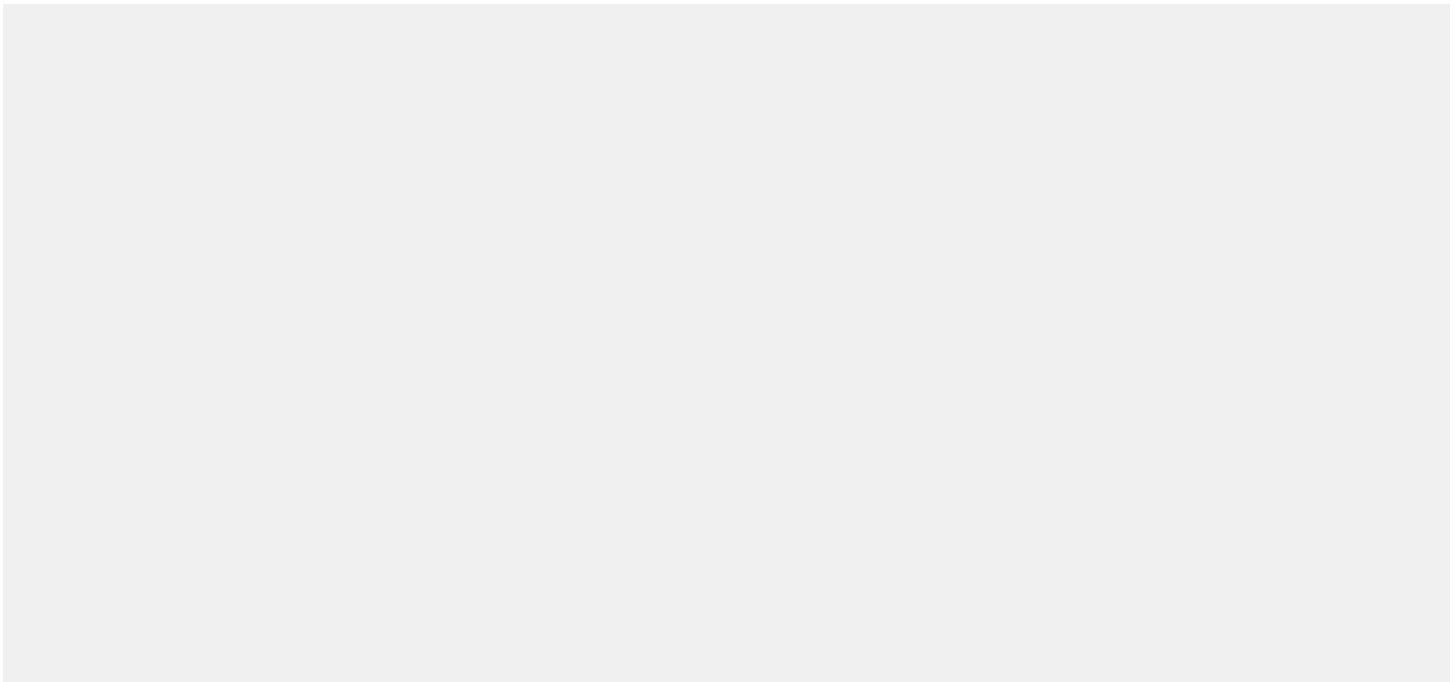


| | |
|--|---------------------------------------|
| ■ | <= 25 Mph : 13,866 - (77.31 %) |
| ■ | 26 - 30 Mph : 2,951 - (16.45 %) |
| ■ | 31 - 35 Mph : 894 - (4.98 %) |
| ■ | 36 - 40 Mph : 188 - (1.05 %) |
| ■ | 41 - 45 Mph : 32 - (0.18 %) |
| ■ | 46 - 65 Mph (and more) : 4 - (0.02 %) |

Start date: Monday, December 2, 2024 1:30 PM
End date: Wednesday, January 15, 2025 11:30 PM

Location:

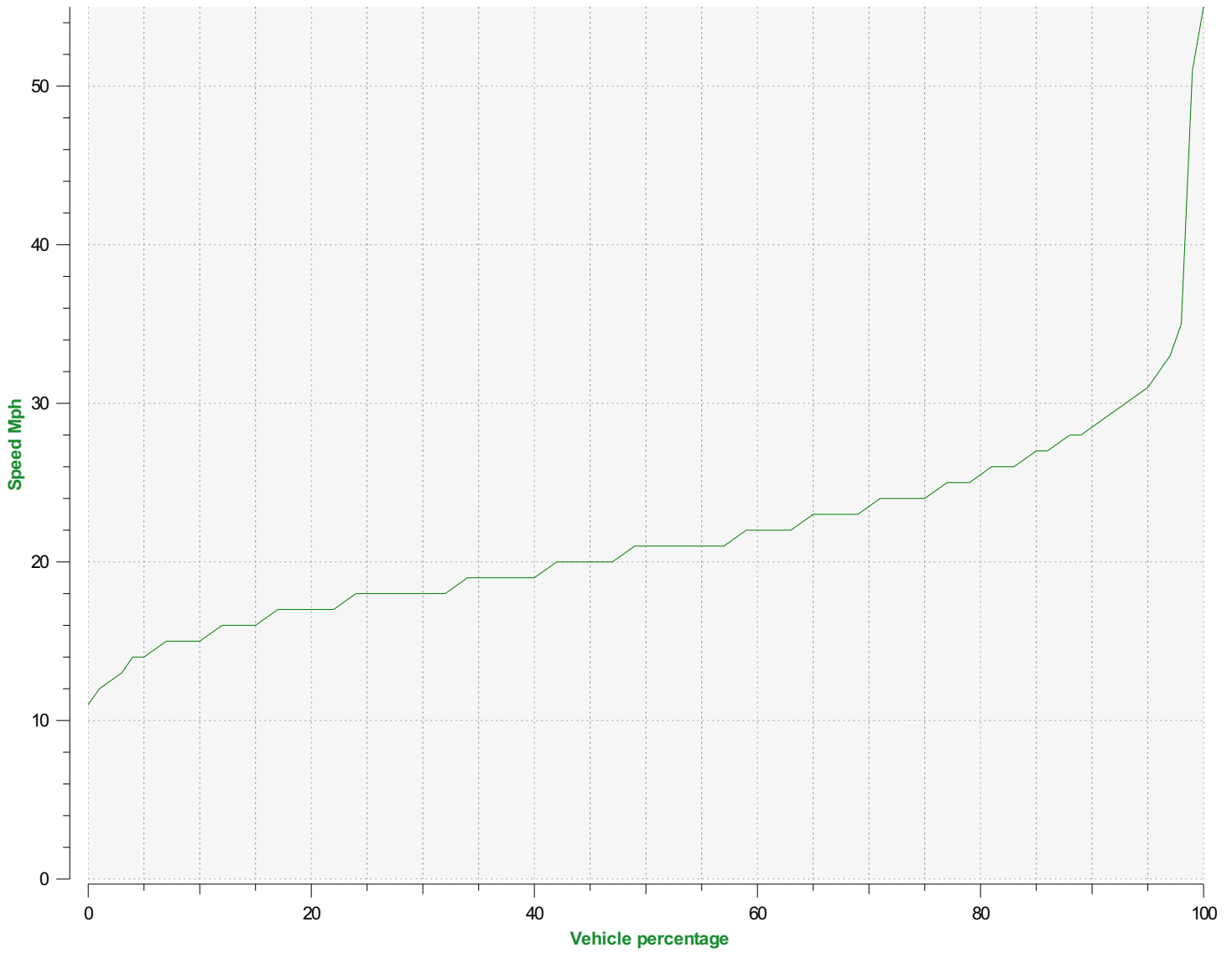
Comments:



Start date: Monday, December 2, 2024 1:30 PM
End date: Wednesday, January 15, 2025 11:30 PM

Location:

Comments:



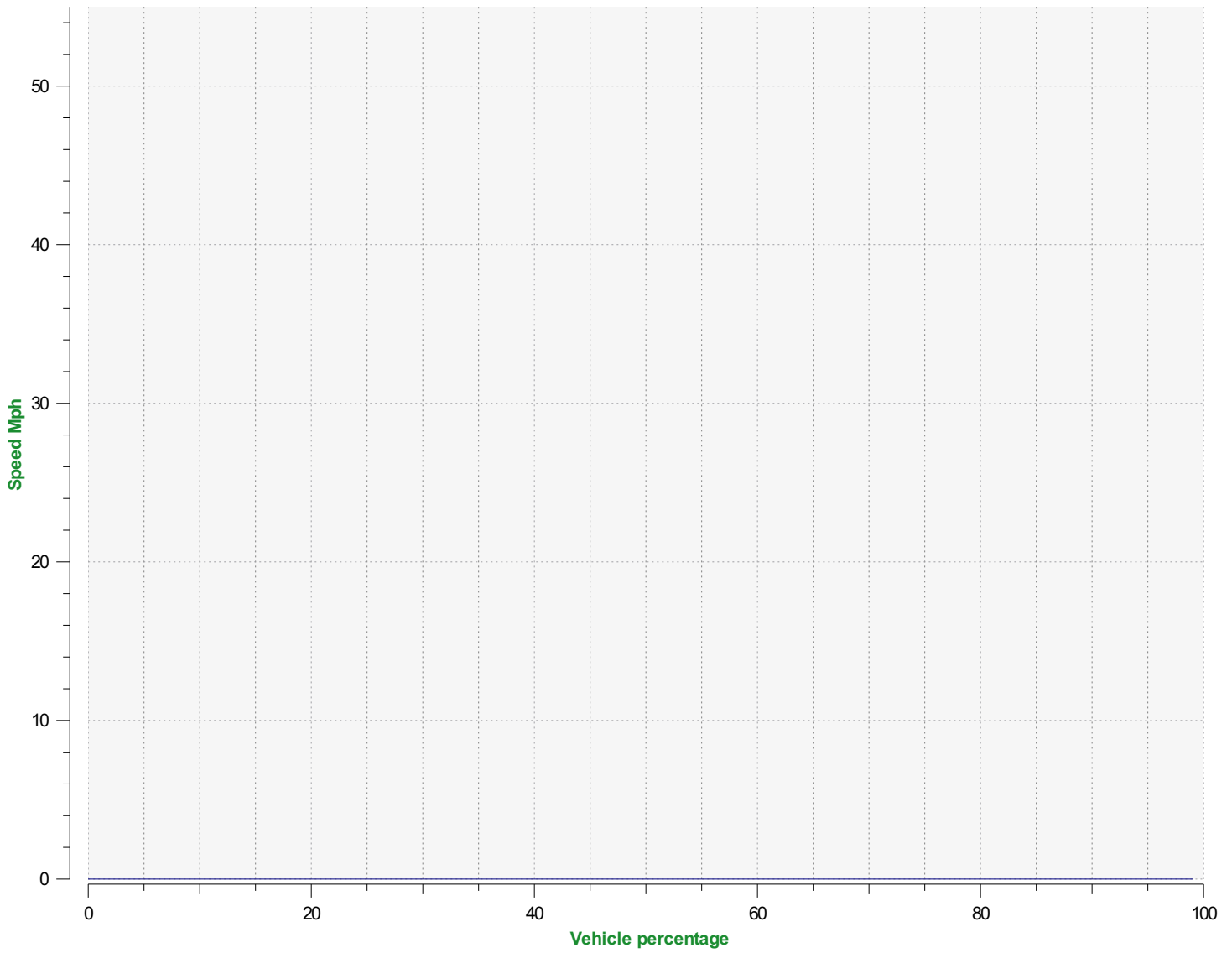
Speed percentiles (incoming)

V30: 18.00Mph **V50:** 21.00Mph **V85:** 27.00Mph

Start date: Monday, December 2, 2024 1:30 PM
End date: Wednesday, January 15, 2025 11:30 PM

Location:

Comments:



Speed percentile(outgoing)

V30: 0.00Mph **V50:** 0.00Mph **V85:** 0.00Mph

Start date: Monday, December 2, 2024 1:30 PM
End date: Wednesday, January 15, 2025 11:30 PM

Location:

Comments: