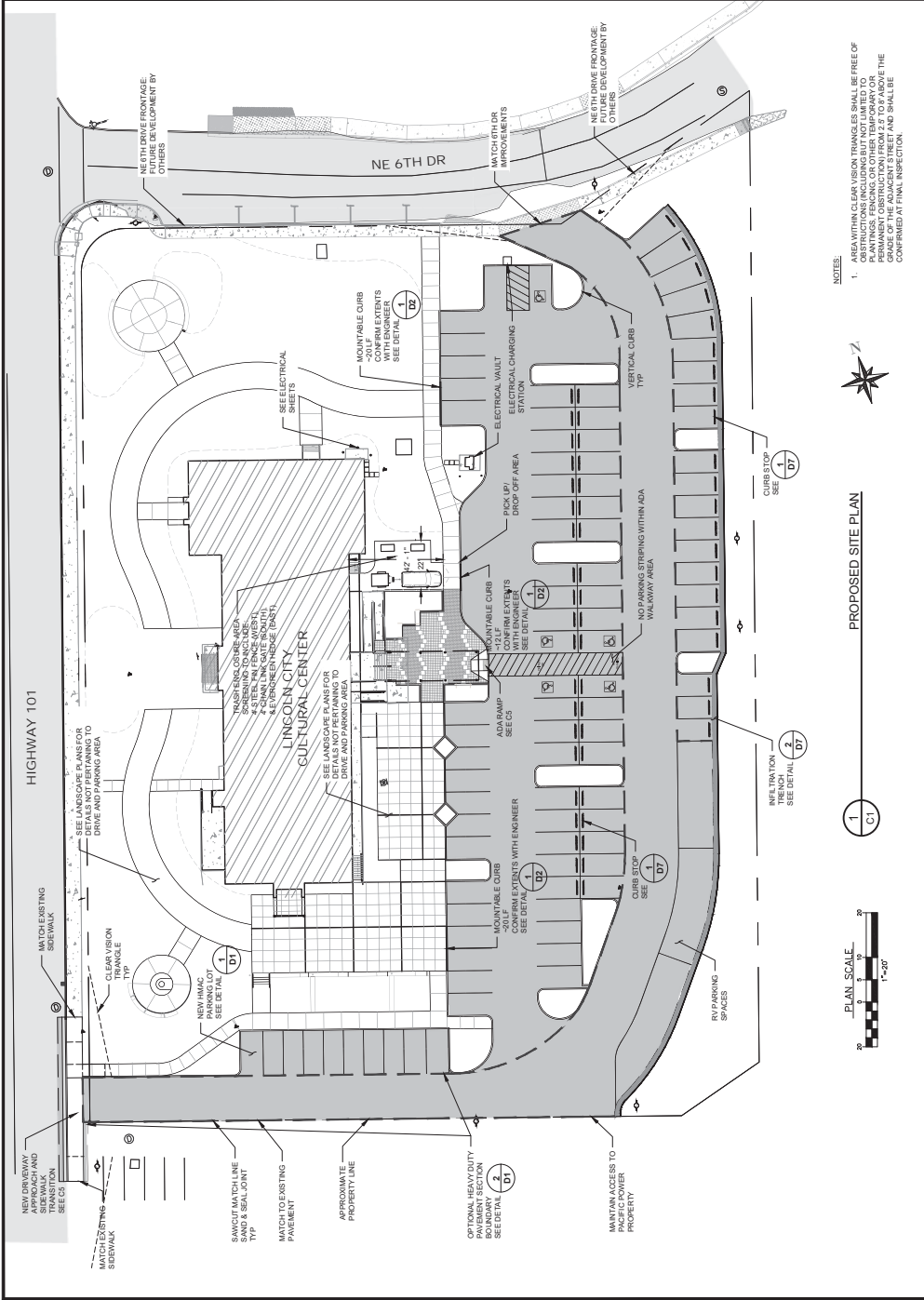


		406 E Street Coos Bay, Oregon 97420 WWW.CIVILWEST.COM 541-266-8601	Project No.: 2004-051 Drawn By: [Blank] Check By: [Blank]
	LICENSED PROFESSIONAL ENGINEER SEAN DEANE 88602PE OREGON	Civil West ENGINEERING & SURVEYING, LLC	486 E Street Coos Bay, Oregon 97420 WWW.CIVILWEST.COM 541-266-8601

NOVEMBER 2022
 G1

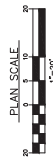
LINCOLN CITY CULTURAL CENTER
 LINCOLN COUNTY
 SITE IMPROVEMENTS
 PROPOSED SITE PLAN



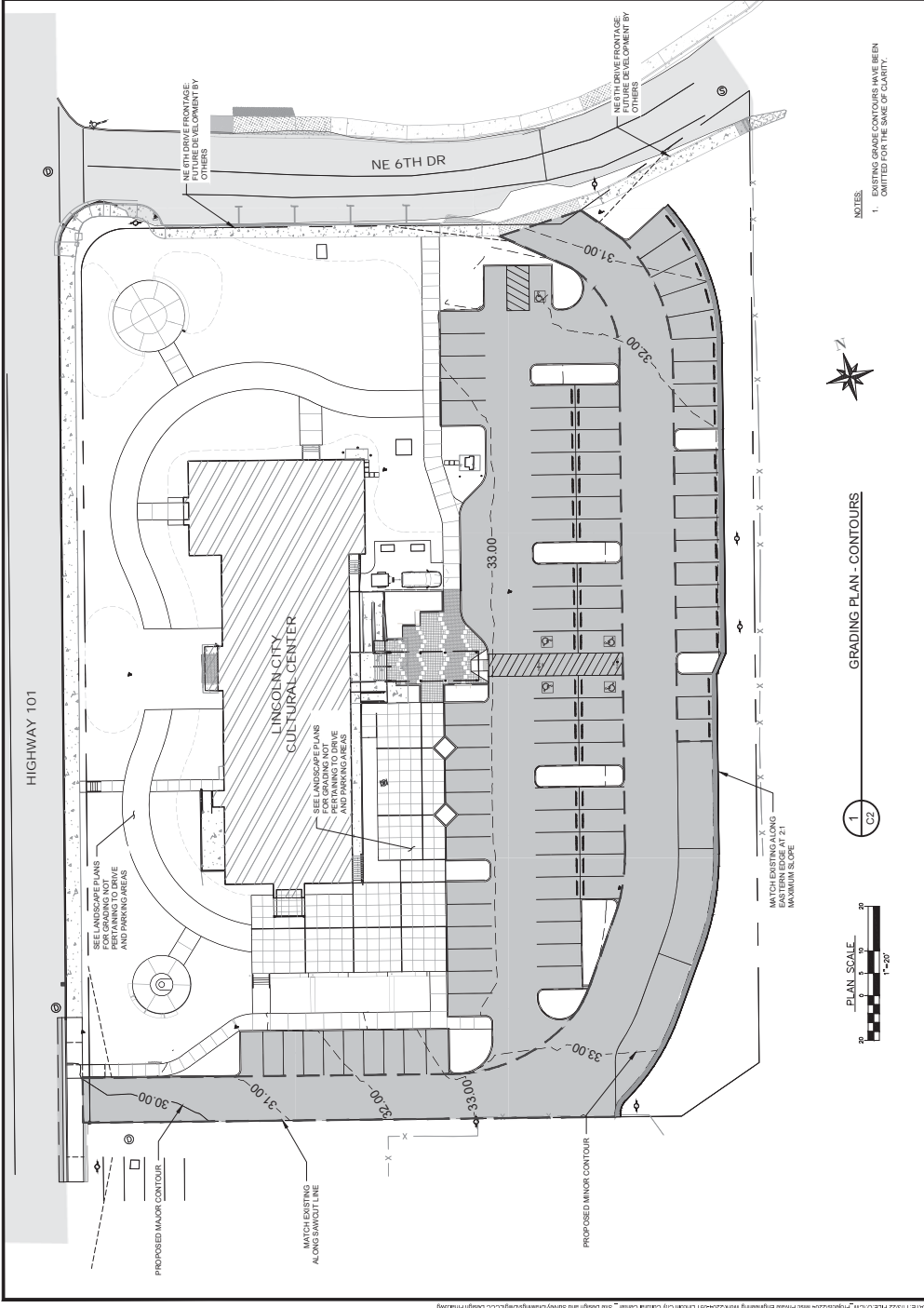
NOTES:
 1. AREAS WITH CLEAR VISION TRIANGLES SHALL BE FREE OF PLANTINGS, FENCING OR OTHER TEMPORARY OR PERMANENT OBSTRUCTIONS. THE LOCATION AND GRADE OF THE ADJACENT STREET AND SHALL BE CONFIRMED AT FINAL INSPECTION.



PROPOSED SITE PLAN
 1
 C1



		486 E Street Coos Bay, Oregon 97420 WWW.CIVILWEST.COM 541-266-8601	
		REG. NO. 1231221	PROJECT NO. 2004-051
REGISTERED PROFESSIONAL ENGINEER SCOTT A. HAYS LICENSE # 86622PE STATE OF OREGON CIVIL ENGINEERING		CIVIL WEST ENGINEERING SERVICES, INC. 486 E STREET COOS BAY, OREGON 97420 WWW.CIVILWEST.COM 541-266-8601	

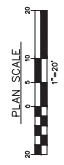


NOTES:
 1. EXISTING GRADE CONTOURS HAVE BEEN OMITTED FOR THE SAKE OF CLARITY.

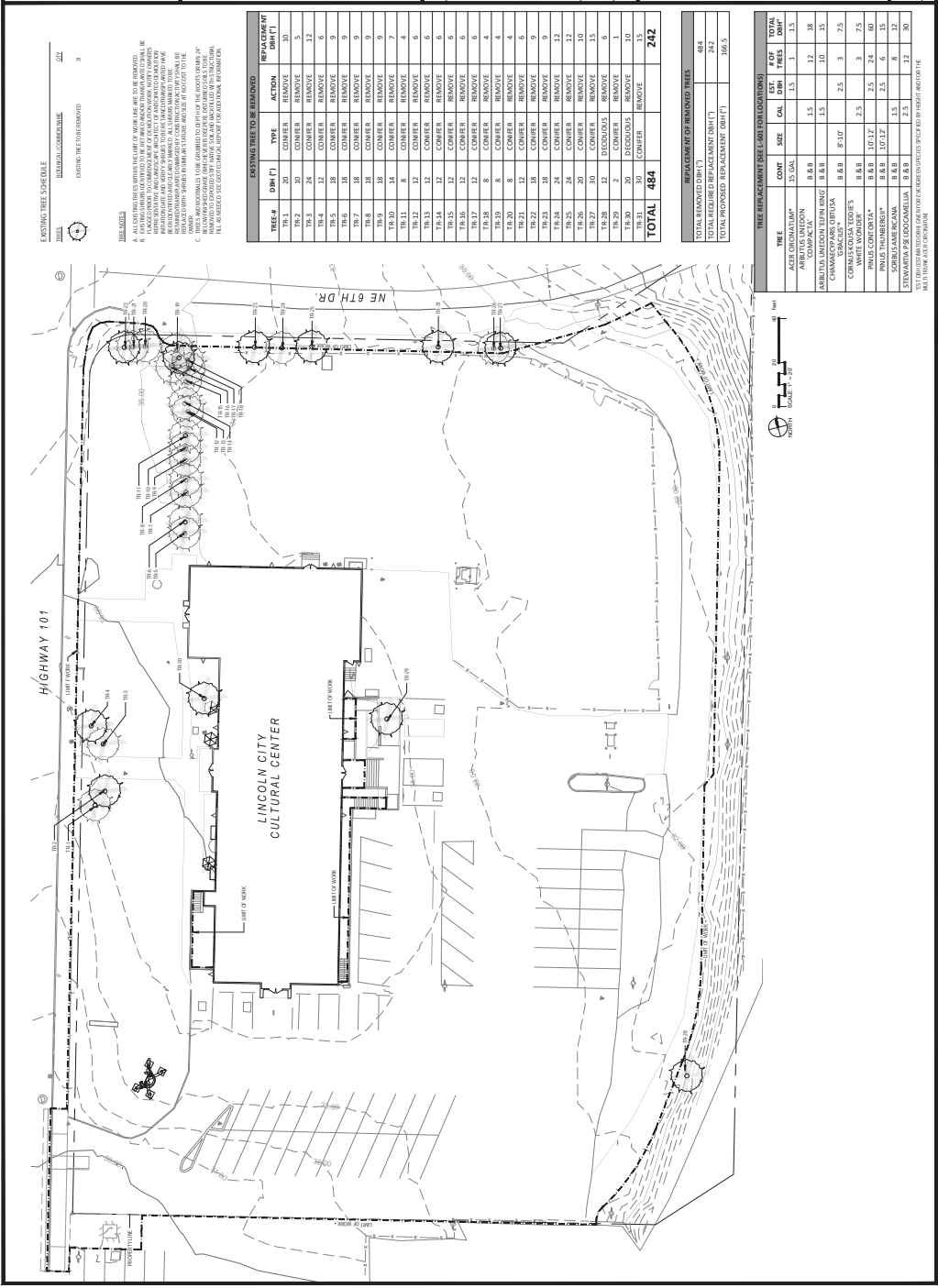


GRADING PLAN - CONTOURS

1 C2



C2
 NOVEMBER 2022



EXISTING TREE SCHEDULE
 NUMBER OF TREES
 484
 242
 196.5

LEGEND
 1. TREES TO BE REMOVED
 2. TREES TO BE REPLACED
 3. TREES TO BE MAINTAINED
 4. TREES TO BE PRESERVED
 5. TREES TO BE PROTECTED
 6. TREES TO BE MONITORED
 7. TREES TO BE RESEARCHED
 8. TREES TO BE REVALUED
 9. TREES TO BE REIMAGED
 10. TREES TO BE REINSTALLED
 11. TREES TO BE REINTEGRATED
 12. TREES TO BE REINTEGRATED
 13. TREES TO BE REINTEGRATED
 14. TREES TO BE REINTEGRATED
 15. TREES TO BE REINTEGRATED
 16. TREES TO BE REINTEGRATED
 17. TREES TO BE REINTEGRATED
 18. TREES TO BE REINTEGRATED
 19. TREES TO BE REINTEGRATED
 20. TREES TO BE REINTEGRATED

TREE #	DBH (")	TYPE	ACTION	REPLACEMENT DBH (")
TR-1	20	CONIFER	REMOVE	10
TR-2	30	CONIFER	REMOVE	5
TR-3	30	CONIFER	REMOVE	5
TR-4	22	CONIFER	REMOVE	6
TR-5	28	CONIFER	REMOVE	9
TR-6	28	CONIFER	REMOVE	9
TR-7	28	CONIFER	REMOVE	9
TR-8	28	CONIFER	REMOVE	9
TR-9	28	CONIFER	REMOVE	9
TR-10	24	CONIFER	REMOVE	7
TR-11	8	CONIFER	REMOVE	4
TR-12	22	CONIFER	REMOVE	6
TR-13	22	CONIFER	REMOVE	6
TR-14	22	CONIFER	REMOVE	6
TR-15	22	CONIFER	REMOVE	6
TR-16	22	CONIFER	REMOVE	6
TR-17	22	CONIFER	REMOVE	6
TR-18	8	CONIFER	REMOVE	4
TR-19	8	CONIFER	REMOVE	4
TR-20	8	CONIFER	REMOVE	4
TR-21	22	CONIFER	REMOVE	6
TR-22	28	CONIFER	REMOVE	9
TR-23	28	CONIFER	REMOVE	9
TR-24	24	CONIFER	REMOVE	12
TR-25	20	CONIFER	REMOVE	10
TR-26	30	CONIFER	REMOVE	15
TR-27	22	DECIDUOUS	REMOVE	6
TR-28	20	DECIDUOUS	REMOVE	6
TR-29	20	DECIDUOUS	REMOVE	10
TR-30	30	CONIFER	REMOVE	15
TOTAL	484			242

REPLACEMENT OF REMOVED TREES	
TOTAL REMOVED DBH (")	484
TOTAL REQUIRED REPLACEMENT DBH (")	242
TOTAL PROPOSED REPLACEMENT DBH (")	196.5

TREE	COUNT	SIZE	EST. CAL. DBH	# OF TREES	TOTAL DBH (")
LAKE ARROWWOOD	12	12"	1.5	1	1.5
ARABIAN MYRTLE	8	8"	1.5	12	18
CHAMAECYPARUS OBTUSA	8	8"	2.5	20	25
WHITE WOODRUE	8	8"	2.5	3	7.5
PHILE CONTORTA	8	8"	2.5	3	7.5
QUERCUS THURBERGII	8	8"	2.5	24	60
QUERCUS LAEVIS	8	8"	2.5	6	15
STYRACIS GLABRA	8	8"	2.5	6	15
STYRACIS FLORIDANA	8	8"	2.5	12	30
STYRACIS LACINIOSA	8	8"	2.5	12	30

SEE EXISTING TREE SCHEDULE FOR TREE IDENTIFICATION AND SPECIES. SEE EXISTING TREE SCHEDULE FOR TREE IDENTIFICATION AND SPECIES. SEE EXISTING TREE SCHEDULE FOR TREE IDENTIFICATION AND SPECIES.



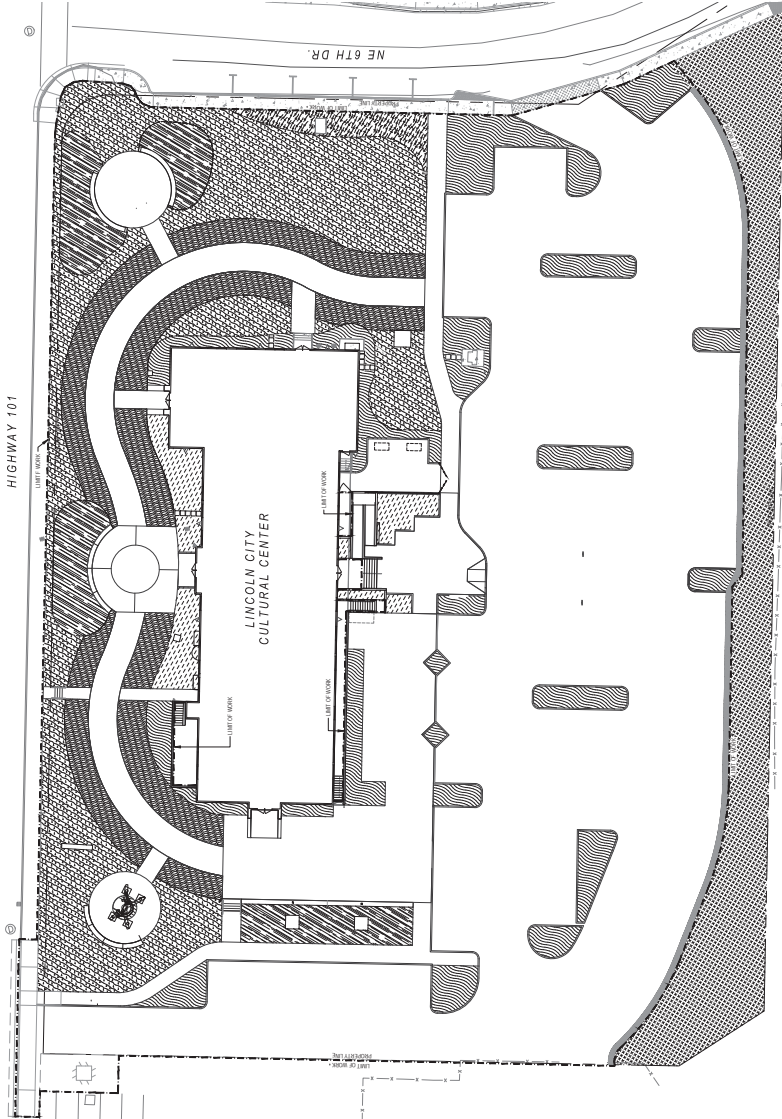
Civil West
 Engineering & Surveying, Inc.
 186 E. Stevens
 Coos Bay, Oregon 97420
 541-266-9001
 www.civilwest.com

REV.	DATE	DESCRIPTION

SOLS PLAN
 LINCOLN CITY CULTURAL CENTER
 LINCOLN COUNTY

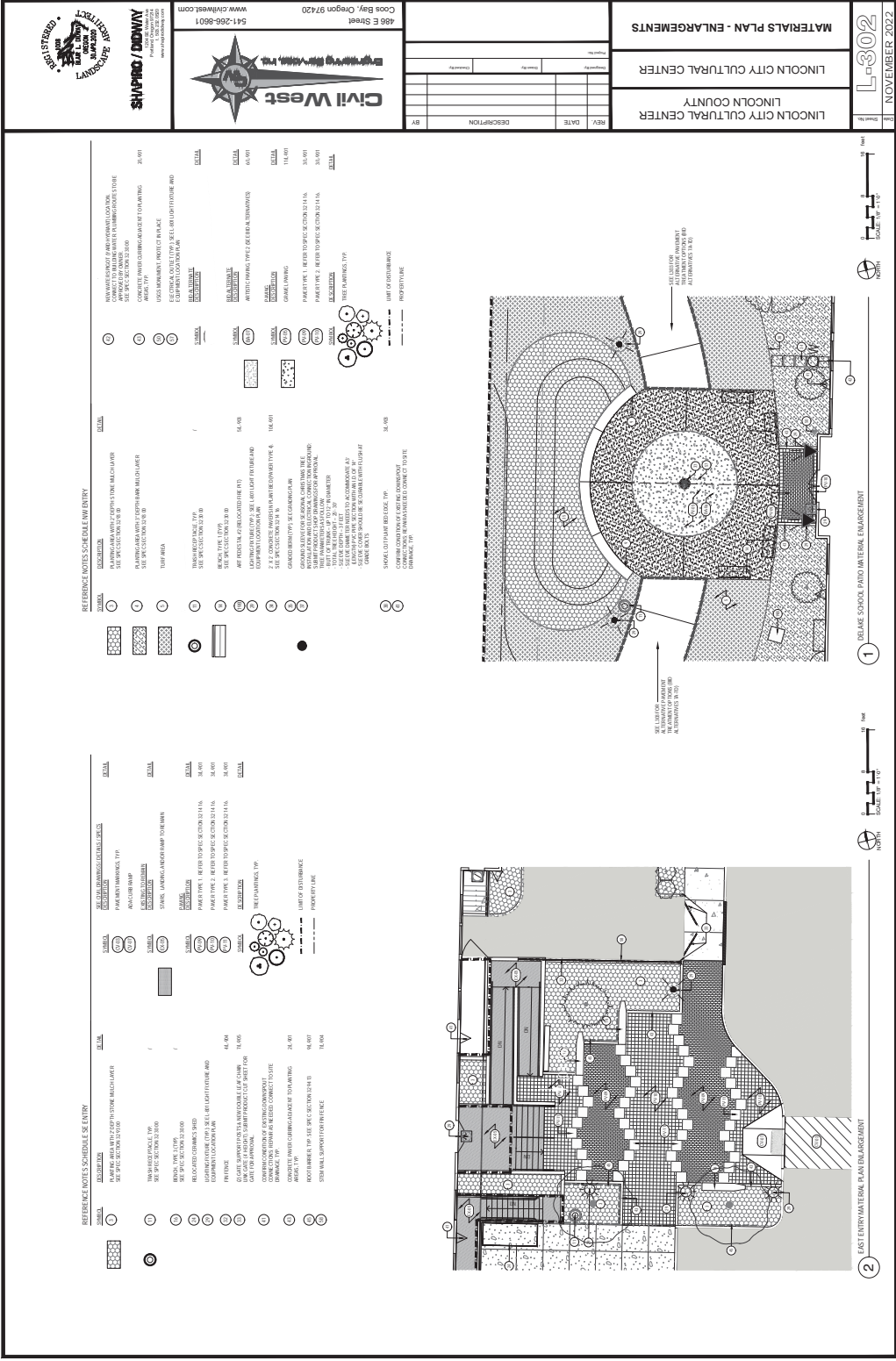
L-201
 NOVEMBER 2022

SOIL INFORMATION
 1. THE SOILS SHOWN ON THIS PLAN WERE DETERMINED FROM THE FIELD AND/OR FROM LABORATORY TESTS.
 2. SOILS ARE CLASSIFIED BASED ON THE NATIONAL ENGINEERING GEOLOGIC MAP OF THE UNITED STATES AND THE NATIONAL ENGINEERING GEOLOGIC MAP OF OREGON.
 3. SOILS ARE CLASSIFIED BASED ON THE NATIONAL ENGINEERING GEOLOGIC MAP OF THE UNITED STATES AND THE NATIONAL ENGINEERING GEOLOGIC MAP OF OREGON.
 4. SOILS ARE CLASSIFIED BASED ON THE NATIONAL ENGINEERING GEOLOGIC MAP OF THE UNITED STATES AND THE NATIONAL ENGINEERING GEOLOGIC MAP OF OREGON.
 5. SOILS ARE CLASSIFIED BASED ON THE NATIONAL ENGINEERING GEOLOGIC MAP OF THE UNITED STATES AND THE NATIONAL ENGINEERING GEOLOGIC MAP OF OREGON.
 6. SOILS ARE CLASSIFIED BASED ON THE NATIONAL ENGINEERING GEOLOGIC MAP OF THE UNITED STATES AND THE NATIONAL ENGINEERING GEOLOGIC MAP OF OREGON.
 7. SOILS ARE CLASSIFIED BASED ON THE NATIONAL ENGINEERING GEOLOGIC MAP OF THE UNITED STATES AND THE NATIONAL ENGINEERING GEOLOGIC MAP OF OREGON.
 8. SOILS ARE CLASSIFIED BASED ON THE NATIONAL ENGINEERING GEOLOGIC MAP OF THE UNITED STATES AND THE NATIONAL ENGINEERING GEOLOGIC MAP OF OREGON.
 9. SOILS ARE CLASSIFIED BASED ON THE NATIONAL ENGINEERING GEOLOGIC MAP OF THE UNITED STATES AND THE NATIONAL ENGINEERING GEOLOGIC MAP OF OREGON.
 10. SOILS ARE CLASSIFIED BASED ON THE NATIONAL ENGINEERING GEOLOGIC MAP OF THE UNITED STATES AND THE NATIONAL ENGINEERING GEOLOGIC MAP OF OREGON.



SOIL PLAN REFERENCE NOTES

- 1. ALL SOILS ARE CLASSIFIED BASED ON THE NATIONAL ENGINEERING GEOLOGIC MAP OF THE UNITED STATES AND THE NATIONAL ENGINEERING GEOLOGIC MAP OF OREGON.
- 2. SOILS ARE CLASSIFIED BASED ON THE NATIONAL ENGINEERING GEOLOGIC MAP OF THE UNITED STATES AND THE NATIONAL ENGINEERING GEOLOGIC MAP OF OREGON.
- 3. SOILS ARE CLASSIFIED BASED ON THE NATIONAL ENGINEERING GEOLOGIC MAP OF THE UNITED STATES AND THE NATIONAL ENGINEERING GEOLOGIC MAP OF OREGON.
- 4. SOILS ARE CLASSIFIED BASED ON THE NATIONAL ENGINEERING GEOLOGIC MAP OF THE UNITED STATES AND THE NATIONAL ENGINEERING GEOLOGIC MAP OF OREGON.
- 5. SOILS ARE CLASSIFIED BASED ON THE NATIONAL ENGINEERING GEOLOGIC MAP OF THE UNITED STATES AND THE NATIONAL ENGINEERING GEOLOGIC MAP OF OREGON.
- 6. SOILS ARE CLASSIFIED BASED ON THE NATIONAL ENGINEERING GEOLOGIC MAP OF THE UNITED STATES AND THE NATIONAL ENGINEERING GEOLOGIC MAP OF OREGON.
- 7. SOILS ARE CLASSIFIED BASED ON THE NATIONAL ENGINEERING GEOLOGIC MAP OF THE UNITED STATES AND THE NATIONAL ENGINEERING GEOLOGIC MAP OF OREGON.
- 8. SOILS ARE CLASSIFIED BASED ON THE NATIONAL ENGINEERING GEOLOGIC MAP OF THE UNITED STATES AND THE NATIONAL ENGINEERING GEOLOGIC MAP OF OREGON.
- 9. SOILS ARE CLASSIFIED BASED ON THE NATIONAL ENGINEERING GEOLOGIC MAP OF THE UNITED STATES AND THE NATIONAL ENGINEERING GEOLOGIC MAP OF OREGON.
- 10. SOILS ARE CLASSIFIED BASED ON THE NATIONAL ENGINEERING GEOLOGIC MAP OF THE UNITED STATES AND THE NATIONAL ENGINEERING GEOLOGIC MAP OF OREGON.



LANDSCAPE ARCHITECTURE
SHUPAK / DOWN
 1000 N. 10TH AVENUE, SUITE 100
 DENVER, CO 80202
 WWW.SHUPAKDOWN.COM

Civil West
 486 E. Stevens
 Coos Bay, Oregon 97420
 541-266-9501
 WWW.CIVILWEST.COM

MATERIALS PLAN - ENLARGEMENTS
 LINCOLN CITY CULTURAL CENTER
 LINCOLN COUNTY

L-302
 NOVEMBER 2022

REFERENCE NOTES - SCHEDULE 1 - NEW ENTRY

REVISIONS

REVISION 1
 11/14/22
 1. REVISED MATERIALS LIST TO INCLUDE ALL MATERIALS TO BE USED IN THE ENLARGEMENTS.
 2. REVISED LAYOUT TO REFLECT CHANGES TO THE PLAY EQUIPMENT AND WATER ROW.
 3. REVISED NOTES TO REFLECT CHANGES TO THE MATERIALS LIST AND LAYOUT.

REVISION 2
 11/14/22
 1. REVISED MATERIALS LIST TO INCLUDE ALL MATERIALS TO BE USED IN THE ENLARGEMENTS.
 2. REVISED LAYOUT TO REFLECT CHANGES TO THE PLAY EQUIPMENT AND WATER ROW.
 3. REVISED NOTES TO REFLECT CHANGES TO THE MATERIALS LIST AND LAYOUT.

REVISION 3
 11/14/22
 1. REVISED MATERIALS LIST TO INCLUDE ALL MATERIALS TO BE USED IN THE ENLARGEMENTS.
 2. REVISED LAYOUT TO REFLECT CHANGES TO THE PLAY EQUIPMENT AND WATER ROW.
 3. REVISED NOTES TO REFLECT CHANGES TO THE MATERIALS LIST AND LAYOUT.

REFERENCE NOTES - SCHEDULE 2 - NEW ENTRY

REVISIONS

REVISION 1
 11/14/22
 1. REVISED MATERIALS LIST TO INCLUDE ALL MATERIALS TO BE USED IN THE ENLARGEMENTS.
 2. REVISED LAYOUT TO REFLECT CHANGES TO THE PLAY EQUIPMENT AND WATER ROW.
 3. REVISED NOTES TO REFLECT CHANGES TO THE MATERIALS LIST AND LAYOUT.

REVISION 2
 11/14/22
 1. REVISED MATERIALS LIST TO INCLUDE ALL MATERIALS TO BE USED IN THE ENLARGEMENTS.
 2. REVISED LAYOUT TO REFLECT CHANGES TO THE PLAY EQUIPMENT AND WATER ROW.
 3. REVISED NOTES TO REFLECT CHANGES TO THE MATERIALS LIST AND LAYOUT.

REVISION 3
 11/14/22
 1. REVISED MATERIALS LIST TO INCLUDE ALL MATERIALS TO BE USED IN THE ENLARGEMENTS.
 2. REVISED LAYOUT TO REFLECT CHANGES TO THE PLAY EQUIPMENT AND WATER ROW.
 3. REVISED NOTES TO REFLECT CHANGES TO THE MATERIALS LIST AND LAYOUT.

1 DELAKE SCHOOL PLAYGROUND INTERNAL ENLARGEMENT

REVISIONS

REVISION 1
 11/14/22
 1. REVISED MATERIALS LIST TO INCLUDE ALL MATERIALS TO BE USED IN THE ENLARGEMENTS.
 2. REVISED LAYOUT TO REFLECT CHANGES TO THE PLAY EQUIPMENT AND WATER ROW.
 3. REVISED NOTES TO REFLECT CHANGES TO THE MATERIALS LIST AND LAYOUT.

REVISION 2
 11/14/22
 1. REVISED MATERIALS LIST TO INCLUDE ALL MATERIALS TO BE USED IN THE ENLARGEMENTS.
 2. REVISED LAYOUT TO REFLECT CHANGES TO THE PLAY EQUIPMENT AND WATER ROW.
 3. REVISED NOTES TO REFLECT CHANGES TO THE MATERIALS LIST AND LAYOUT.

REVISION 3
 11/14/22
 1. REVISED MATERIALS LIST TO INCLUDE ALL MATERIALS TO BE USED IN THE ENLARGEMENTS.
 2. REVISED LAYOUT TO REFLECT CHANGES TO THE PLAY EQUIPMENT AND WATER ROW.
 3. REVISED NOTES TO REFLECT CHANGES TO THE MATERIALS LIST AND LAYOUT.

2 EAST ENTRY WATER ROW PLAY ENLARGEMENT

REVISIONS

REVISION 1
 11/14/22
 1. REVISED MATERIALS LIST TO INCLUDE ALL MATERIALS TO BE USED IN THE ENLARGEMENTS.
 2. REVISED LAYOUT TO REFLECT CHANGES TO THE PLAY EQUIPMENT AND WATER ROW.
 3. REVISED NOTES TO REFLECT CHANGES TO THE MATERIALS LIST AND LAYOUT.

REVISION 2
 11/14/22
 1. REVISED MATERIALS LIST TO INCLUDE ALL MATERIALS TO BE USED IN THE ENLARGEMENTS.
 2. REVISED LAYOUT TO REFLECT CHANGES TO THE PLAY EQUIPMENT AND WATER ROW.
 3. REVISED NOTES TO REFLECT CHANGES TO THE MATERIALS LIST AND LAYOUT.

REVISION 3
 11/14/22
 1. REVISED MATERIALS LIST TO INCLUDE ALL MATERIALS TO BE USED IN THE ENLARGEMENTS.
 2. REVISED LAYOUT TO REFLECT CHANGES TO THE PLAY EQUIPMENT AND WATER ROW.
 3. REVISED NOTES TO REFLECT CHANGES TO THE MATERIALS LIST AND LAYOUT.