

LINCOLN SANDS CENTER BUILDING

NW INLET AVE
LINCOLN CITY, OR 97367

NOT FOR CONSTRUCTION



LINCOLN SANDS CENTER BUILDING

NW Inlet Ave, Lincoln City, OR 97367

LINCOLN ASSET MANAGEMENT

PROJECT DIRECTORY

OWNER
LINCOLN ASSET MANAGEMENT

CONTRACTOR
O'BRIEN & COMPANY DESIGN-BUILD
208 NW 21ST AVENUE
PORTLAND, OR 97209
CCB#195235

ARCHITECT
OPEN CONCEPT ARCHITECTURE
208 NW 21ST AVENUE
PORTLAND, OR 97209

STRUCTURAL ENGINEER
ECLIPSE ENGINEERING
ATTN: SCOTT RATTERMAN, PE
2140 SW JEFFERSON ST, SUITE 200
PORTLAND, OR 97201

CIVIL ENGINEER
TBD

MECHANICAL
TBD

ELECTRICAL
TBD

PLUMBING
TBD

FIRE PROTECTION
TBD

SITE INFORMATION

PROJECT ADDRESS :
535 NW INLET AVE LINCOLN
CITY, OR 97367

KEY PLAN

REVISION LIST 

#	DATE	ISSUE

DATE : 07/15/22

DRAWN : Author

CHECKED : Checker

PROJECT # : 20-055

G0.00

COVER SHEET

DEVELOPMENT REVIEW



GENERAL NOTES:
 RENDERINGS FOR REFERENCE ONLY

NOT FOR CONSTRUCTION

LINCOLN SANDS CENTER BUILDING
 NW Inlet Ave, Lincoln City, OR 97367
 LINCOLN ASSET MANAGEMENT

KEY PLAN

REVISION LIST

#	DATE	ISSUE

DATE : 07/15/22
 DRAWN :
 CHECKED :
 PROJECT # : 20-055

DR001
 DEVELOPMENT REVIEW
 RENDERINGS

GENERAL NOTES:
RENDERINGS FOR REFERENCE ONLY

NOT FOR CONSTRUCTION



LINCOLN SANDS CENTER BUILDING

NW Inlet Ave, Lincoln City, OR 97367

LINCOLN ASSET MANAGEMENT

KEY PLAN

REVISION LIST

#	DATE	ISSUE

DATE: 07/15/22

DRAWN:

CHECKED:

PROJECT #: 20-055

DR002

RENDERINGS

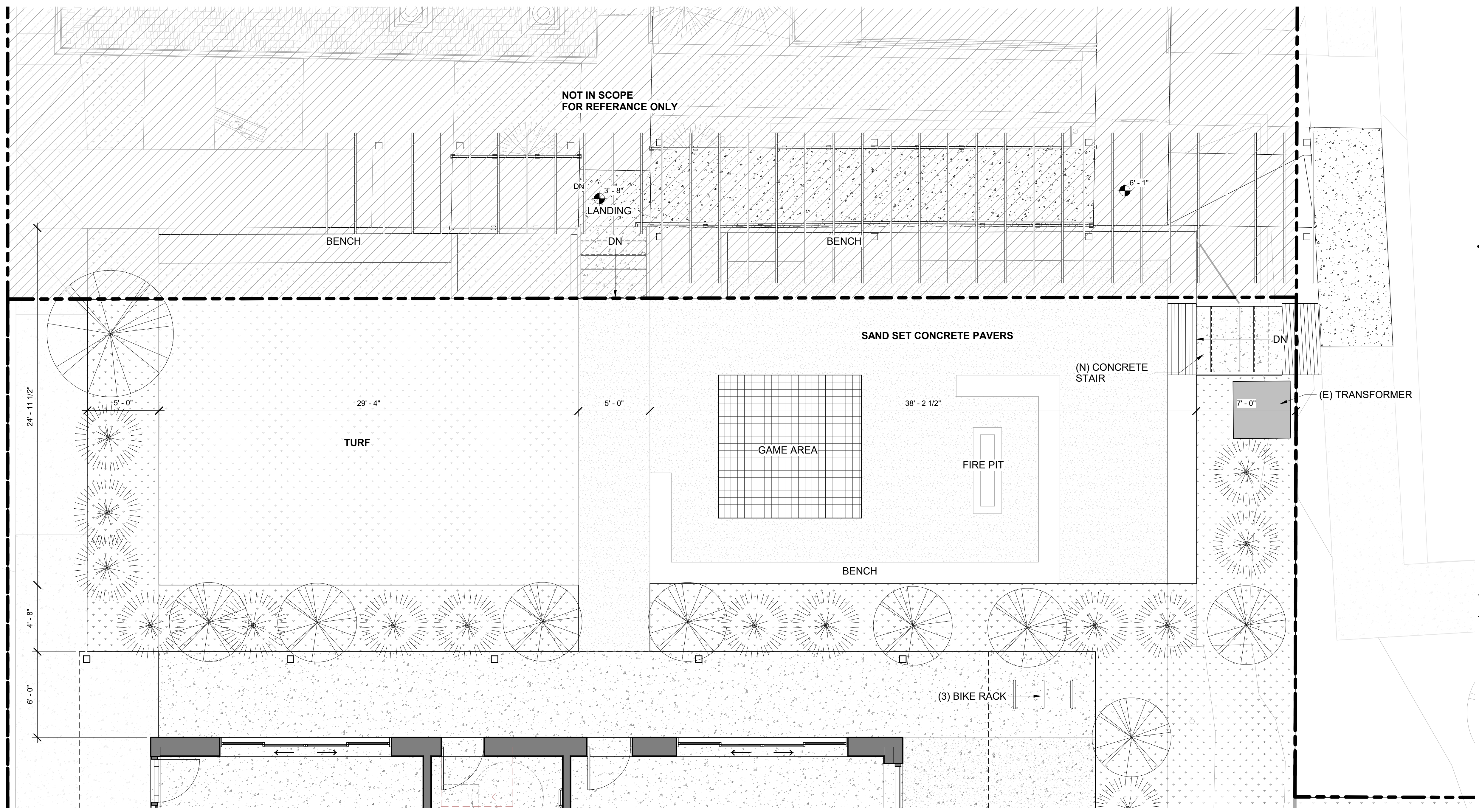
DEVELOPMENT REVIEW

SHEET NOTES

- DROUGHT TOLERANT PLANTS TO UTILIZED WITH SOAKER HOSES AND TEMPORARY IRRIGATION DURING ESTABLISHMENT PERIOD.
- LANDSCAPING TO INCLUDE THE FOLLOWING:
A. ONE TREE PER 20 FEET OF TOTAL LOT PERIMETER; AND
B. ONE SHRUB PER 10 FEET OF TOTAL LOT PERIMETER; AND
C. LIVING GROUND COVER.

NOTE: 550 LF OF LOT PERIMETER REQUIRES 27.5 TREES (28 PROVIDED) AND 55 SHRUBS/GRASSES (55 PROVIDED).

NOT FOR CONSTRUCTION

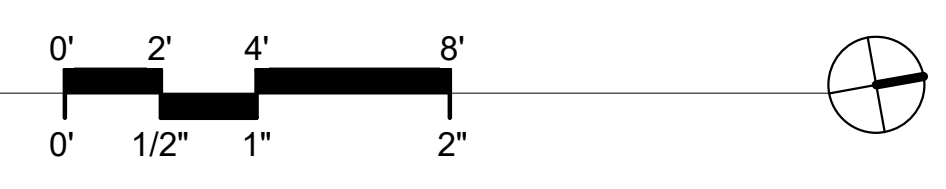


NEW CONSTRUCTION LEGEND

- NEW LANDSCAPED AREA WITH NATIVE DUNE GRASSES (1 PLANT PER 3 SF)
- NEW INFILTRATION SWALE WITH NATIVE BEACH GRASSES
- NEW CONCRETE
- NEW ASPHALT OR RESEALED OR RESTRIPED EXISTING ASPHALT
- EXISTING CONTOUR LINE
- PROPERTY LINE
- EXISTING TREE
- (N) SHORE PINE WITH 1 1/2" CALIPER / 6'-0" TALL MIN.
- GREENSPHERE MAZANITA (3 GAL POT MIN.)
- EXISTING STREET LIGHT
- NEW RECESSED LIGHT
- NEW WALL MOUNTED LIGHTING FIXTURE
- SEMI-MOUNTED SITE LIGHTING (20' TALL)
- BENCH LIGHTING

LINCOLN SANDS CENTER BUILDING
NW Inlet Ave, Lincoln City, OR 97367
LINCOLN ASSET MANAGEMENT

1 ENLARGED SITE PLAN - COURTYARD
1/4" = 1'-0"



KEY PLAN

REVISION LIST

#	DATE	ISSUE

DATE : 07/15/22
DRAWN : MO, XM
CHECKED : JC / VC
PROJECT #: 20-055

#	DATE	ISSUE

LANDSCAPE PLAN NOTES

TOTAL SITE AREA	17,162 SF
HARDSCAPE AREA	13,663 SF
LANDSCAPE AREA	3,499 SF (22% OF SITE AREA)
PEDESTRIAN SPACE AREA	3,092 SF

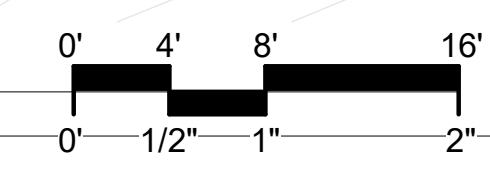
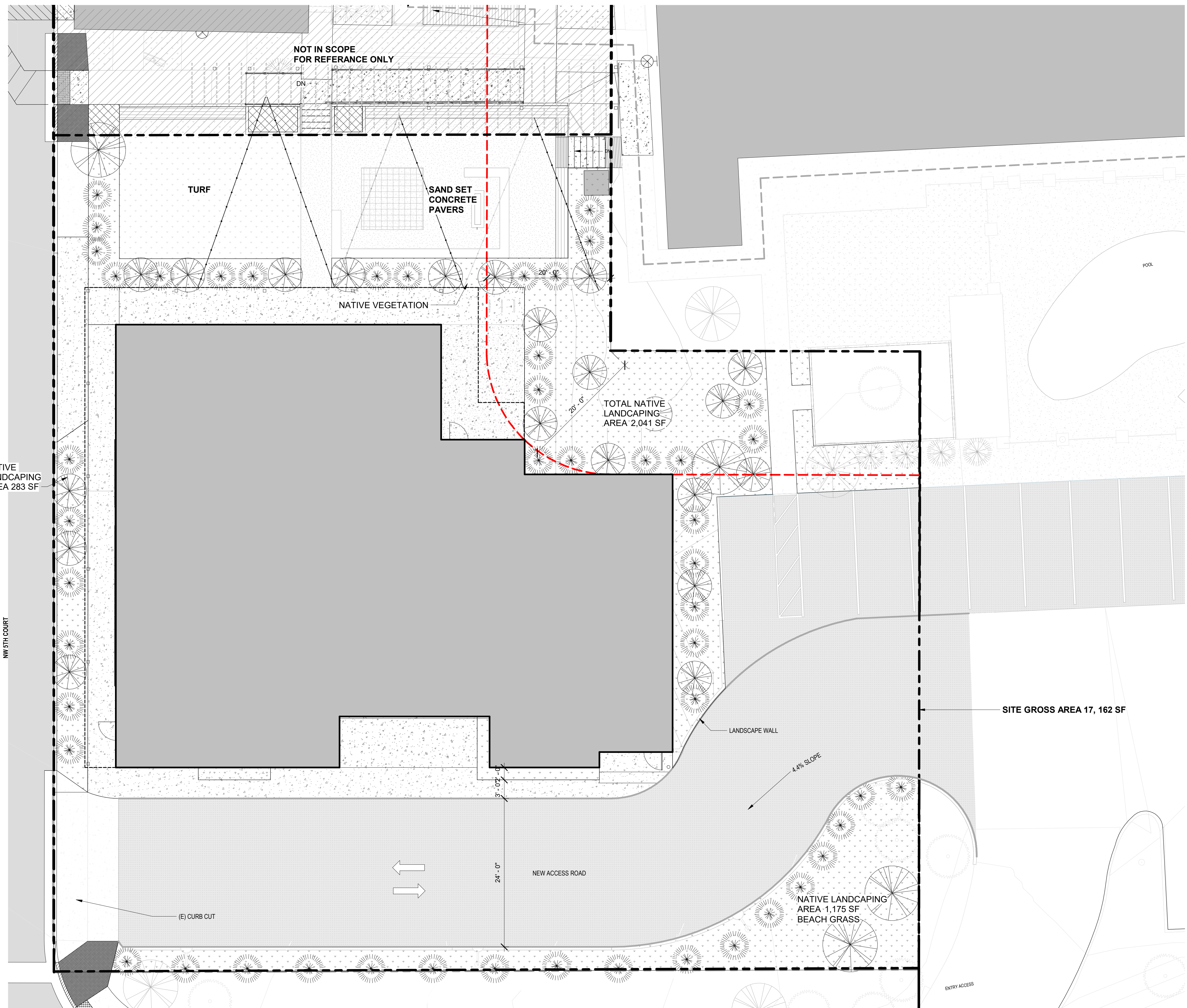
- DROUGHT TOLERANT PLANTS TO BE UTILIZED WITH SOAKER HOSES AND TEMPORARY IRRIGATION DURING ESTABLISHMENT PERIOD.
 - LANDSCAPING TO INCLUDE THE FOLLOWING:
 - A. ONE TREE PER 20 FEET OF TOTAL LOT PERIMETER; AND
 - B. ONE SHRUB PER 10 FEET OF TOTAL LOT PERIMETER; AND
 - C. LIVING GROUND COVER.
- NOTE: 550 LF OF LOT PERIMETER REQUIRES 27.5 TREES (28 PROVIDED) AND 55 SHRUBS/GRASSES (55 PROVIDED).

NEW CONSTRUCTION LEGEND

- NEW LANDSCAPED AREA WITH NATIVE DUNE GRASSES (1 PLANT PER 3 SF)
- NEW INFILTRATION SWALE WITH NATIVE BEACH GRASSES
- NEW CONCRETE
- NEW ASPHALT OR RESEALED OR RESTRIPIED EXISTING ASPHALT
- EXISTING CONTOUR LINE
- PROPERTY LINE
- EXISTING TREE
- (N) SHORE PINE WITH 1 1/2" CALIPER / 6'-0" TALL MIN.
- GREENSPHERE MAZANITA (3 GAL POT MIN.)
- EXISTING STREET LIGHT
- NEW RECESSED LIGHT
- NEW WALL MOUNTED LIGHTING FIXTURE
- SEMI-CYLINDRICAL SITE LIGHTING (20' TALL)
- BENCH LIGHTING

PLANTING SCHEDULE		
NAME	NUMBER	SIZE AT TIME OF PLANTING
GREENSPHERE MAZANITA	55	3 GAL MIN.
SHORE PINE	28	1 1/2" CALIPER / 6'-0" TALL MIN.

TOTAL AREA OF LANDSCAPING 3,499 SF



1 LANDSCAPE PLAN
1/8" = 1'-0"

SHEET SIZE: 22" x 34"

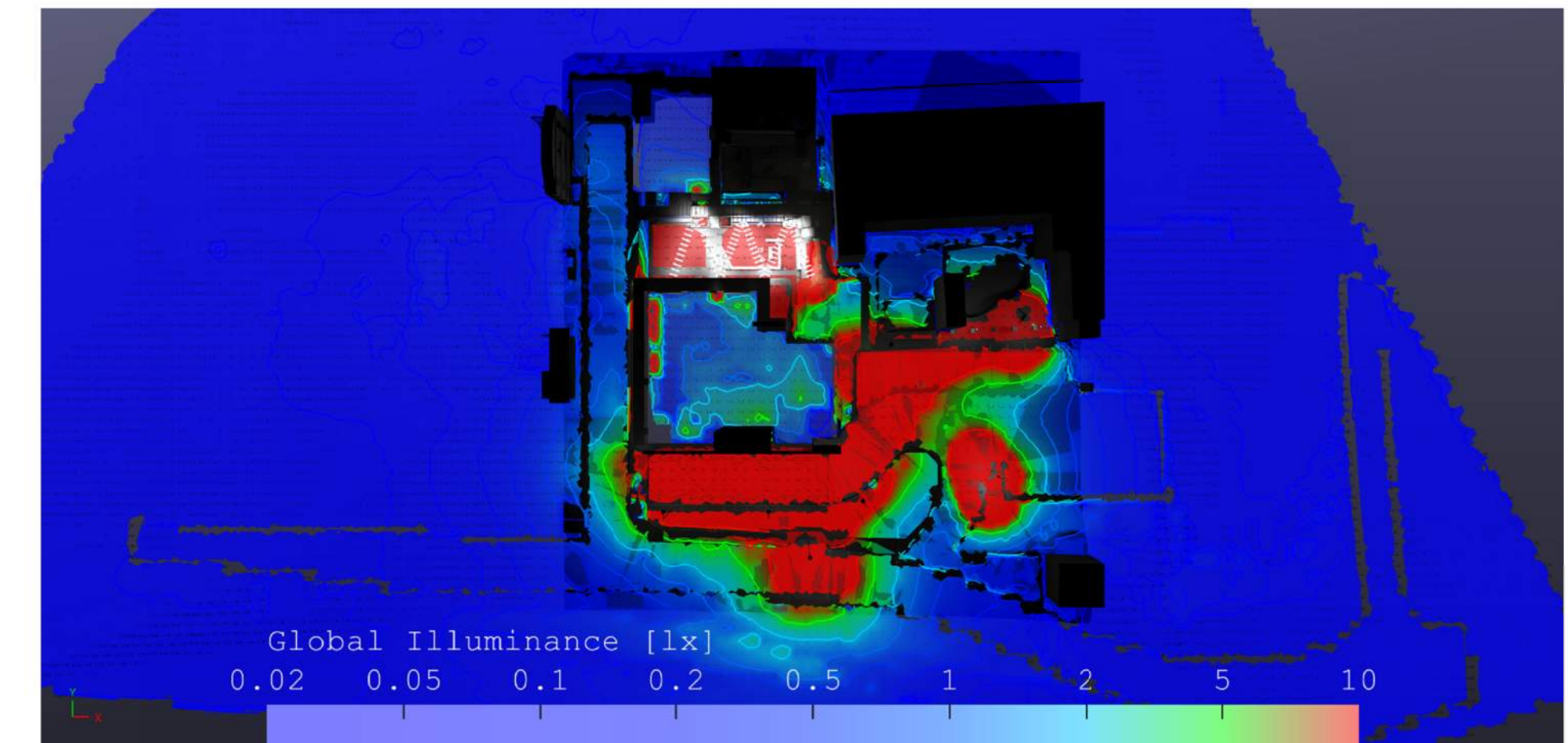
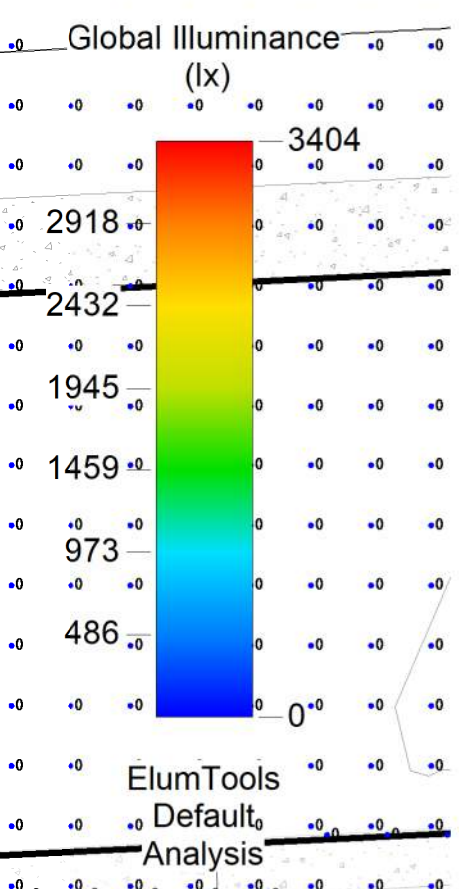
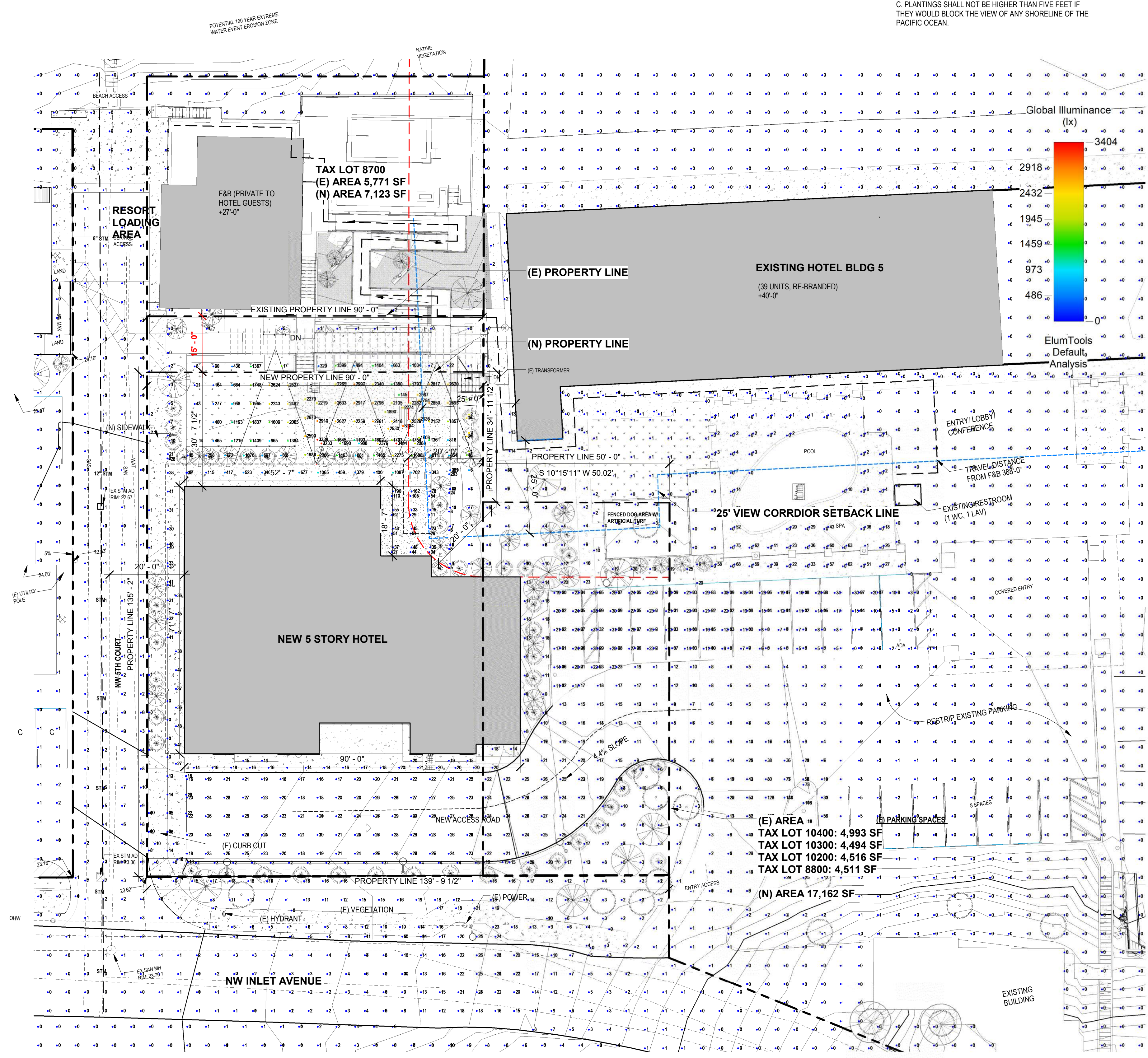
7/15/2022 10:52:27 AM

SHEET NOTES

1. SITE GRADING IS FOR REFERENCE ONLY. DROUGHT TOLERANT PLANTS TO UTILIZED WITH SOAKER HOSES AND TEMPORARY IRRIGATION DURING ESTABLISHMENT PERIOD.
2. LANDSCAPING TO INCLUDE THE FOLLOWING:
A. ONE LARGE TREE OR TWO SMALL TREES PER 20 FEET OF LOT PERIMETER; AND
B. ONE DECIDUOUS OR EVERGREEN SHRUB PER FIVE FEET OF LOT PERIMETER.
C. PLANTINGS SHALL NOT BE HIGHER THAN FIVE FEET IF THEY WOULD BLOCK THE VIEW OF ANY SHORELINE OF THE PACIFIC OCEAN.

GRAPHIC LEGEND

	NEW INFILTRATION SWALE WITH NATIVE BEACH GRASSES (1 PLANT PER 9 SF)		EXISTING STREET		EXISTING CONTOUR LINE
	NEW LANDSCAPED AREA		EXISTING CONCRETE		EXISTING TREE
	NEW CONCRETE		RESEALED OR RESTRIPEDED EXISTING ASPHALT		(N) SHORE PINE WITH 1" CALIPER / 6'-0" TALL MIN.
	NEW ASPHALT		FIRE ACCESS PATH		DWARF WAX MYRTLE (1 GAL POT MIN.)
					ROSEMARY (ROSMARINUS (SALVIA) OFFICINALIS)
					EXISTING STREET LIGHT
					NEW WALL MOUNTED LIGHTING FIXTURE
					NEW POLE MOUNTED SITE LIGHTING (20' TALL)



NOT FOR CONSTRUCTION

Lincoln Sands
NW Inlet Ave, Lincoln City, OR 97367
LINCOLN ASSET MANAGEMENT

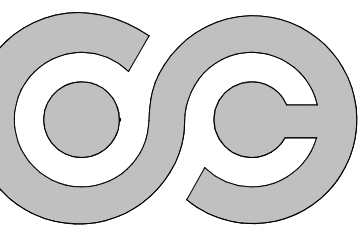
KEY PLAN

REVISION LIST

#	DATE	ISSUE

DATE: 07/15/22
DRAWN: JC
CHECKED: JC
PROJECT #: 22-055

SITE PLAN - PHOTOMETRIC STUDY
POINTS
1/16" = 1'-0"



OPEN CONCEPT
ARCHITECTURE

201 NW 21ST STREET
PORTLAND, OREGON 97209

NOT FOR CONSTRUCTION

Lincoln Sands
NW Inlet Ave, Lincoln City, OR 97367

LINCOLN ASSET MANAGEMENT

KEY PLAN

REVISION LIST [A](#)

#	DATE	ISSUE

DATE : 07/15/22

DRAWN : JC

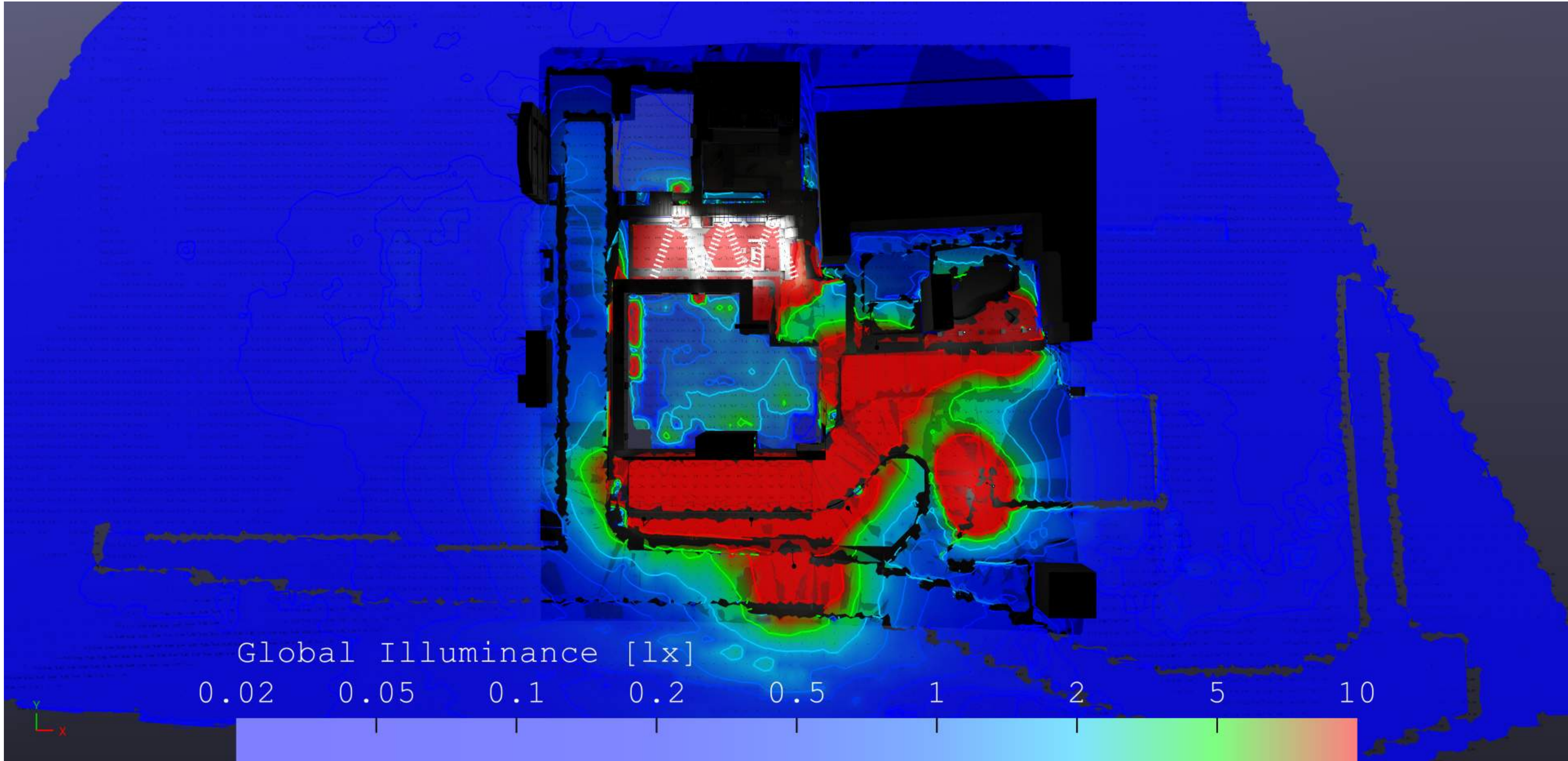
CHECKED : JC

PROJECT # : 22-055

A0.12

PHOTOMETRIC STUDY

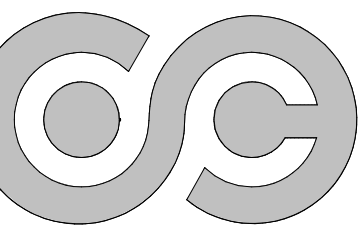
DESIGN DEVELOPMENT



PHOTOMETRIC SPATIAL MAP
12" = 1'-0"

SHEET SIZE: 22" x 34"

7/15/2022 7:01:48 AM



OPEN CONCEPT
ARCHITECTURE

201 NW 21ST STREET
PORTLAND, OREGON 97209

NOT FOR CONSTRUCTION

Lincoln Sands
NW Inlet Ave, Lincoln City, OR 97367
LINCOLN ASSET MANAGEMENT

KEY PLAN

REVISION LIST

#	DATE	ISSUE

DATE: 07/15/22

DRAWN: JC

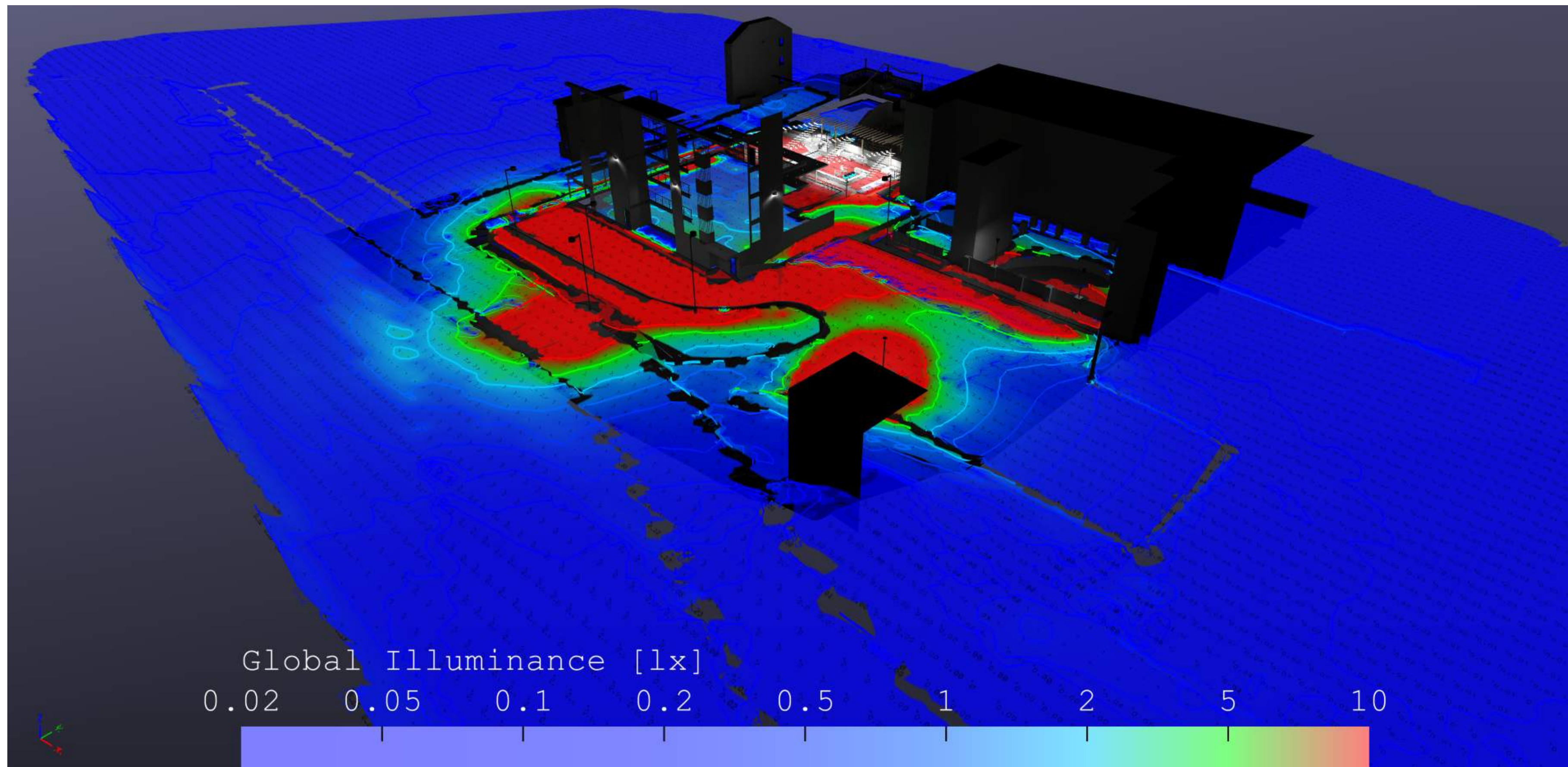
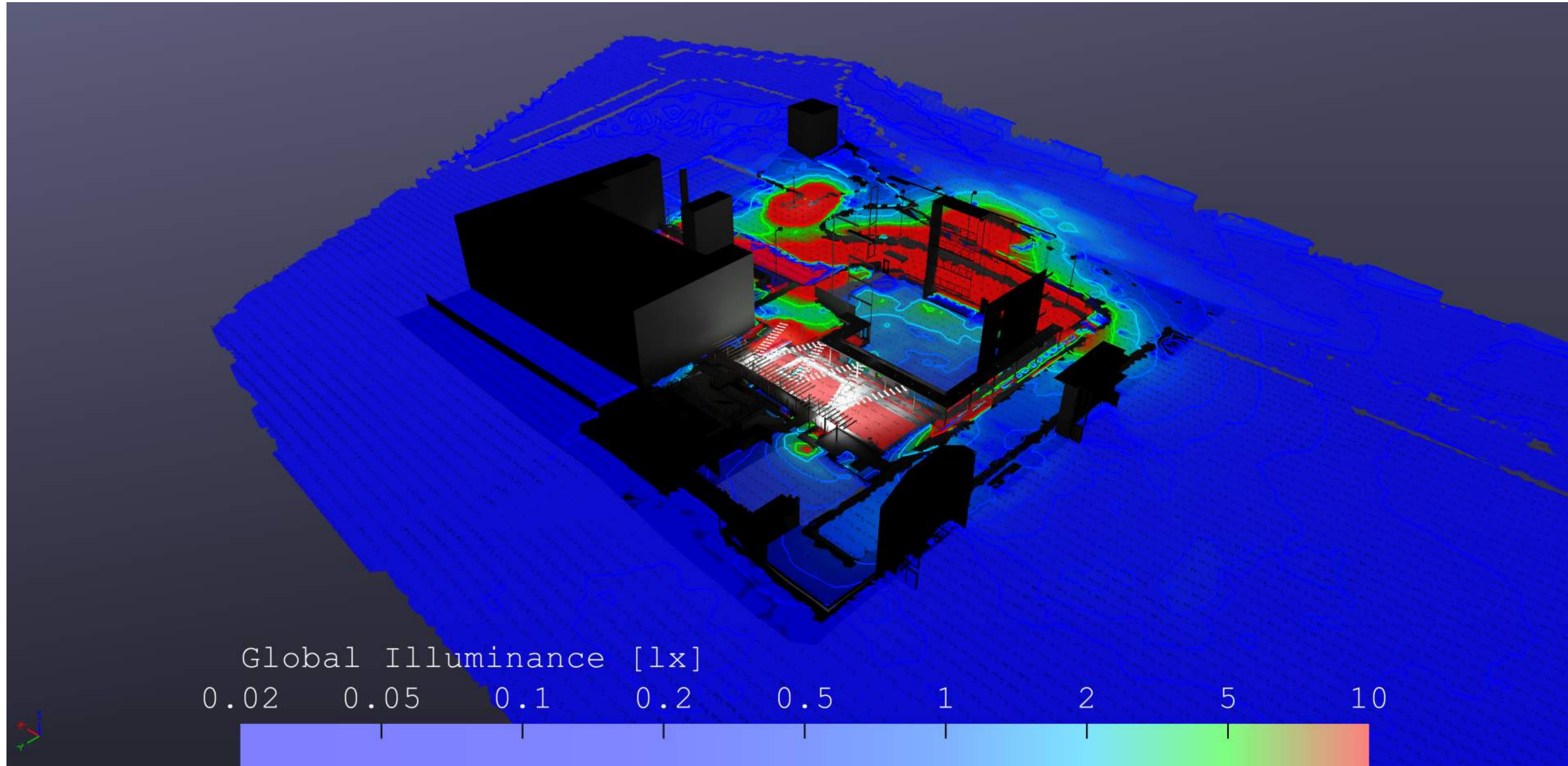
CHECKED: JC

PROJECT #: 22-055

A0.13

PHOTOMETRIC STUDY

DESIGN DEVELOPMENT



SHEET SIZE: 22" x 34"

7/15/2022 7:01:48 AM

NOT FOR CONSTRUCTION

LINCOLN SANDS CENTER BUILDING

 NW Inlet Ave, Lincoln City, OR 97367

LINCOLN ASSET MANAGEMENT

KEY PLAN

REVISION LIST

#	DATE	ISSUE

DATE : 07/15/22

 DRAWN : MO, XM

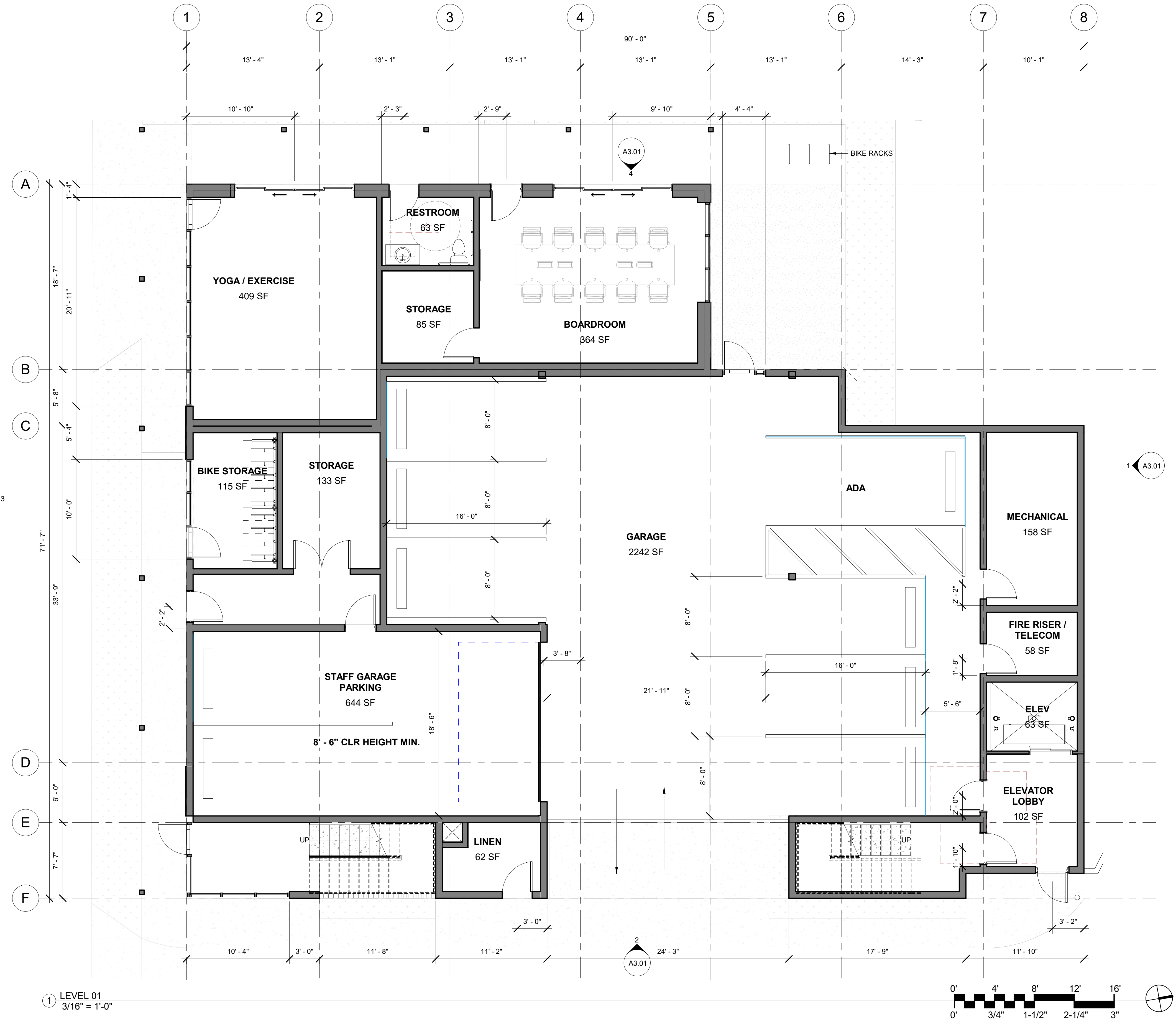
 CHECKED :

 PROJECT # : 20-055

A1.01

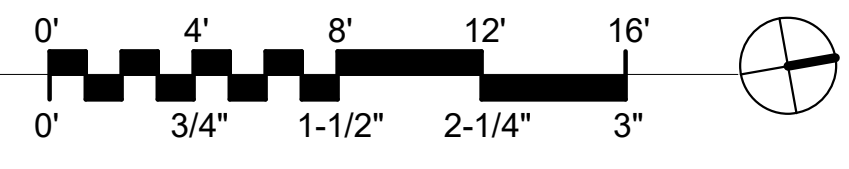
 FLOOR PLAN - LEVEL 01

DEVELOPMENT REVIEW



1 LEVEL 01

 3/16" = 1'-0"

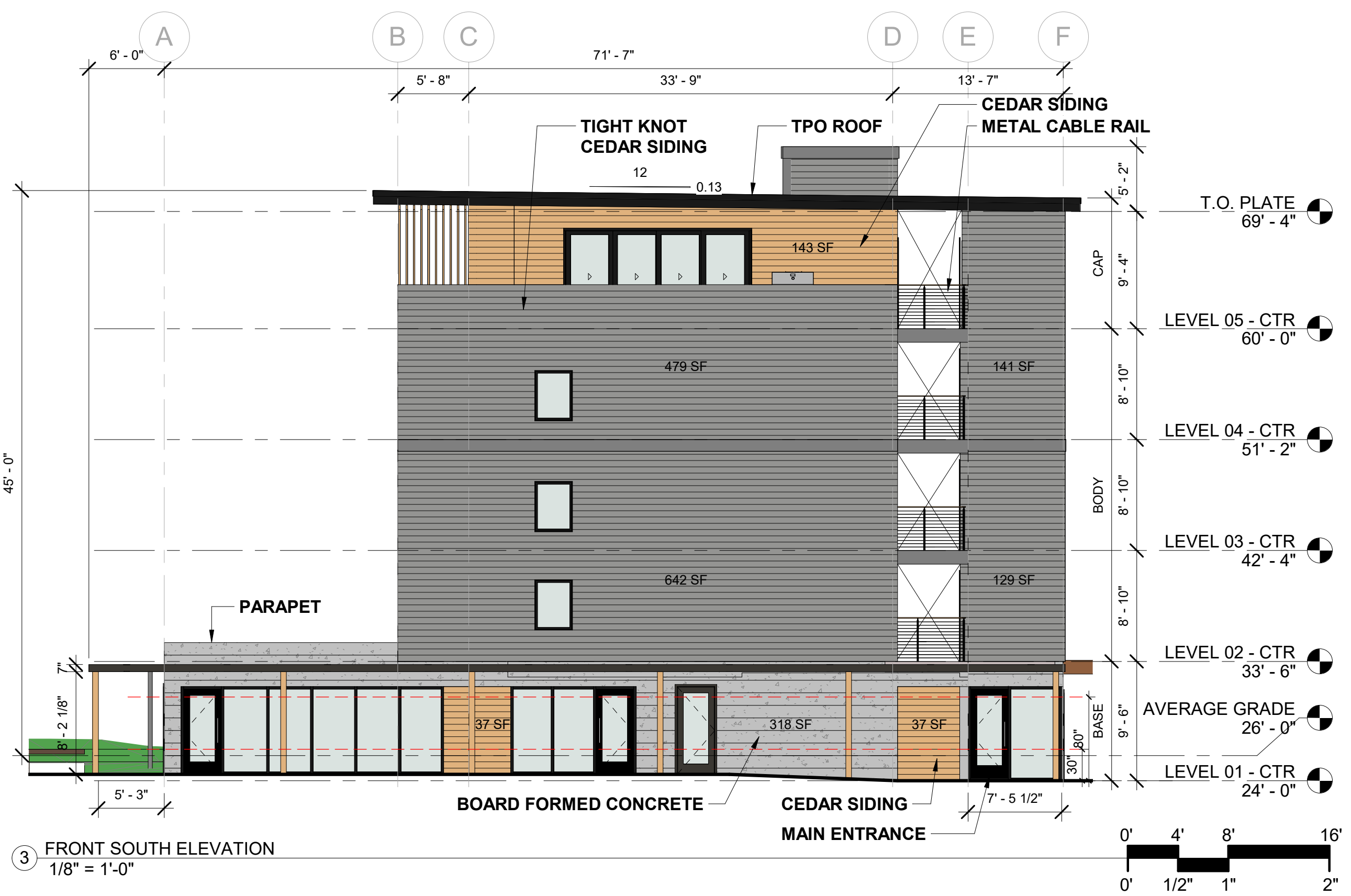
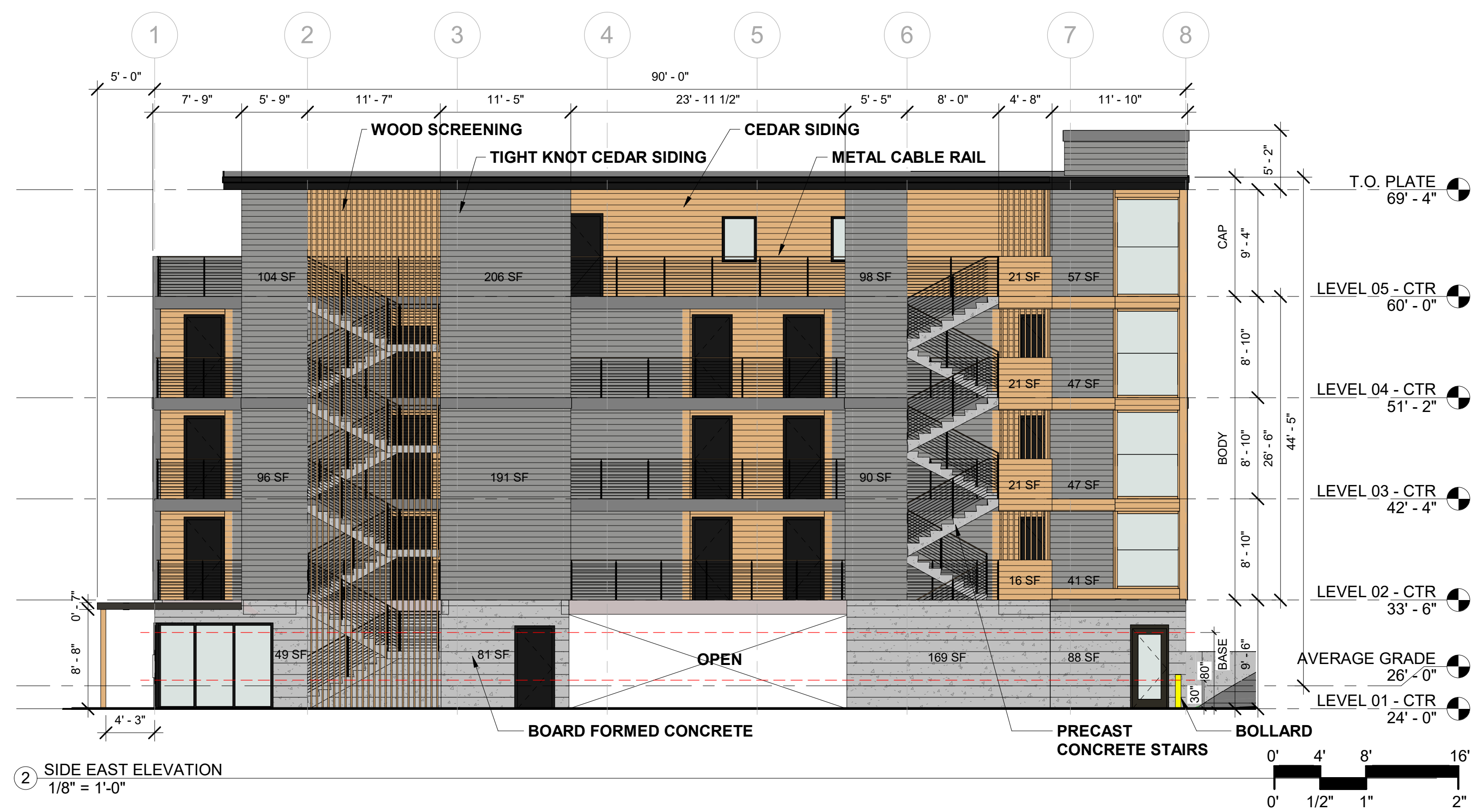
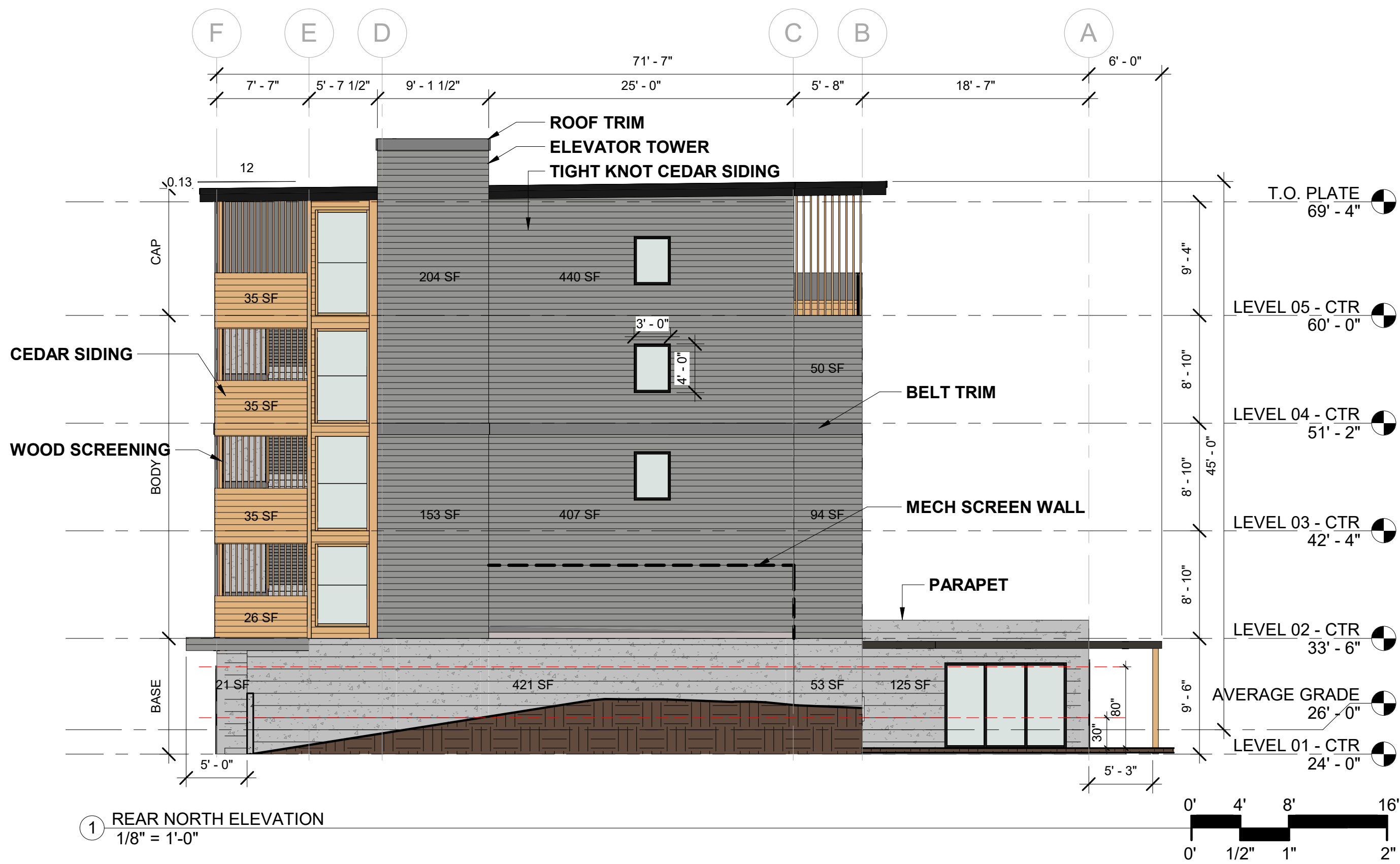


SHEET SIZE: 22" x 34"

 7/15/2022 10:52:39 AM

#	DATE	ISSUE

SHEET SIZE: 22" x 34"



MATERIAL LIST

	TIGHT KNOT CEDAR TO MATCH EXISTING HOTELS		BOARD FORMED CONCRETE		CEDAR SIDING		TREX FLOOR		CABLERRAIL
--	---	--	-----------------------	--	--------------	--	------------	--	------------

ELEVATION NOTES

- PERCENT OF TRANSPARENT WINDOWS ADJACENT TO PUBLIC RIGHT-OF-WAY: 60% PROVIDED, 60% REQUIRED
- PRIMARY ROOF FORM: LOW SLOPE SHED ROOF

7/15/2022 10:52:56 AM

BAKU 52w LED Up Down Light Crescent Wall Pack, Extreme Life 120-277v



SKU: AF33XWP36QFC1X46U

Product Tags: [LED](#), [Wall Pack](#)

Product Page:

<https://www.accessfixtures.com/p/baku-52w-outdoor-wall-lights-175w-hid-eqv/>

Product Description

The BAKU 52w LED Up-Down Crescent Wall Pack, 120-277v is a stylish fixture for any commercial application that requires a bright, efficient, and long-lasting light. Applications include recreational facilities, shopping centers, walkways, and a variety of other outdoor projects.

UP-Down Lighting: The BAKU up-down lighting fixture is ideal for use in areas with strict light trespass regulations and add an even more unique touch to your

commercial building exterior. The bottom of the fixture is enclosed to avoid letting light escape.

High Lumen Output: The BAKU produces a lumen output of 5,922 lumens. At only 52 watts, this fixture has a tremendous efficacy of almost 114 lumens per watt.

Extreme Life: This fixture features an incredible L70 rated life of 410,000 hours! This means that after 410,000 hours, this fixture will still deliver 70% or more of its initial lumens. For reference, 410,000 hours is almost 47 years of sustained light!

Features:

- Up-Down crescent wall pack - 52w integrated LEDs - Die cast aluminum housing - Bottom lens: Tempered clear flat glass - Top lens: Oval molded tempered clear glass - 120-277v - Type V light distribution - (CRI) of 80+ [color rendering index](#)] - CSA listed for wet locations - IP65 rated - L70 rated for 410,000 life hours - 5,922 lumens - Mounts directly over a 4" recessed outlet box - 15 lbs. - 18" x 9" x 7.13" - 5 year warranty
- Options:
 - Choice of finish: bronze or custom RAL - Kelvin temperature: 4000K or 5000K

[\(learn more here\)](#)] - Surge Protection - Battery back-up Access Fixtures 5-Year Warranty

All Access Fixtures products come with a 5-year warranty. If your product is found to have a manufacturing defect, we will replace components, the entire product, or issue a refund. We stand behind the quality of our products. Our customer service team, located in Worcester, MA, is happy to address any questions, comments, or concerns you may have. Please give us a call at 800-468-9925. Please view Access Fixtures' [return policy](#). Need a Photometric Analysis for Your BAKU 52w LED Up Down Light Crescent Wall Pack, Extreme Life 120-277v Project?

A photometric analysis creates a computer simulation of a particular project. No matter what you are lighting, a photometric analysis is an easy way to quantify light levels before purchasing. When a report is generated, a lighting specialist will walk you through it so you know exactly what you will be receiving. Photometrics include average and minimum footcandles, uniformity ratios, spacing, light trespass info, and more. Plus, the cost of the study is refunded back to you when you purchase the fixtures. Call us at 800-468-9925 for more information about ordering a photometric analysis for your project.

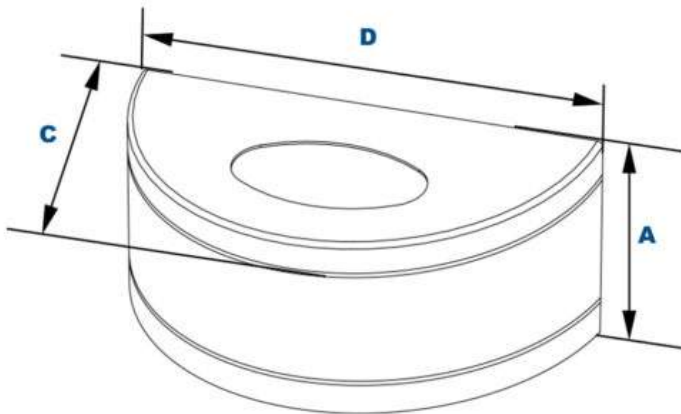
Ready to Order BAKU 52w LED Up Down Light Crescent Wall Pack, Extreme Life 120-277v or
Speak to a Lighting Specialist?

You can place your order online, here. Or, if you want additional information, give us a call at 800-468-9925. Does your project require multiple fixtures? Ask us about quantity discounts. Our team of friendly expert lighting specialists are available to provide what you need to purchase fixtures and illuminate your project with confidence.

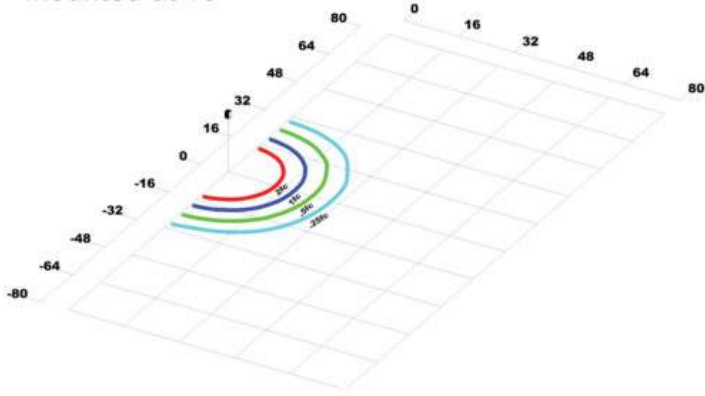
Product Attributes

- Dimensions: 20 × 10 × 10 in
- Weight: 18 lbs
- Availability: Typically ships in 7-10 business days
- Light Source: 4000K - Cool White, 5000K - Bright White
- Available Finishes: Bronze, Custom RAL
- Color Rendering Index (CRI): 80+
- Housing: Gasketed front frame, Nickel plated stainless steel hardware, Die cast aluminum housing
- Lens: Molded oval glass lens for uplight, Clear flat tempered glass lens
- Light Source Included: LED Array Included
- Light Source Lumens: 5922
- Listings: CSA - listed for wet Locations, IP65
- Mounting: Built-in level, Easy-hang wall bracket, Mounts over 4-inch electrical box
- Mounting Height: 10 ft., 15 ft., 20 ft.
- Product Family: BAKU
- Rated Life: 410,000 Hours
- System Watts: 52
- Voltage: 120-277v
- Warranty: 5-Year Limited Warranty
- Style: Up Down

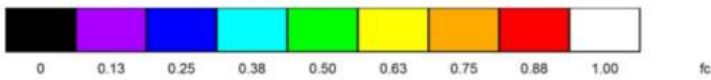
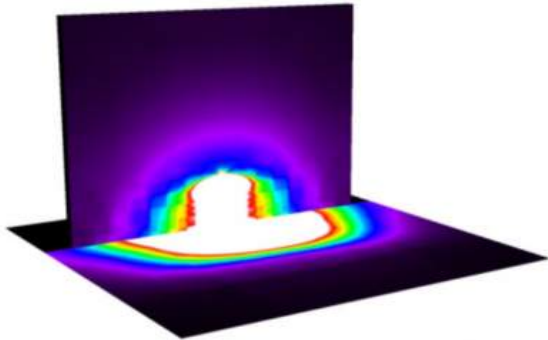
Product Gallery



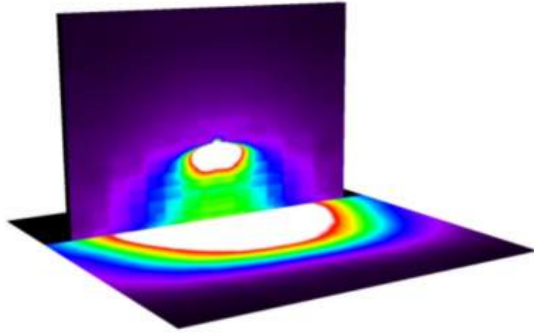
Mounted at 16'



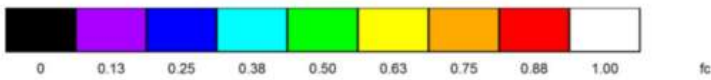
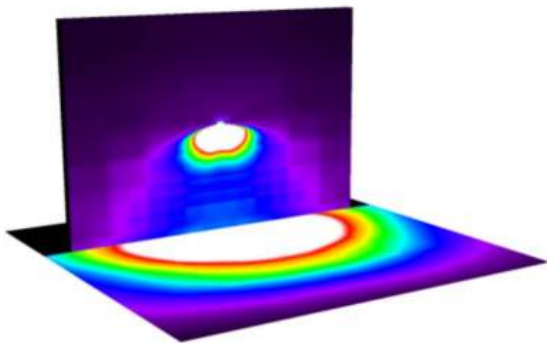
BAKU 52 Mounted at 10' Emits > 1fc 42' Across and 20' Out



BAKU 52 Mounted at 15' Emits > 1fc 46' Across and 23' Out



BAKU 52 Mounted at 20' Emits > 1fc 46' Across and 23' Out





Project Name

Location

Prepared By



NUVO SF77-857

1 LIGHT POLY OVAL CAGE WALL

Notes

[www] 03-22-2021 04:50:59

General

Status	Active
Finish	Black
Style	Traditional
Number of Lamps	1
Height (in.)	5.00
Width (in.)	10.00
Extension (in.)	4.00
Indoor or Outdoor Fixture	Outdoor

Specifications

Base	Medium
Bulb Type	Incandescent
Max Wattage	60
Voltage	120V
Bulb Included	No
Weight (lb.)	1.48
Fixture Type	Wall Fixture
Fixture Material	Aluminum

Compliance

Safety Listing	cULus
Location Rating	Wet
UL Application	Wall
Energy Star	No
ADA Compliant	Yes
California Prop 65	Lead
RoHS Compliant	Yes

Additional Information

Warranty	1 Year Limited - Fixtures
----------	---------------------------



DECOSTRING

SUSPENDED DECORATIVE STRINGLIGHT SYSTEMS

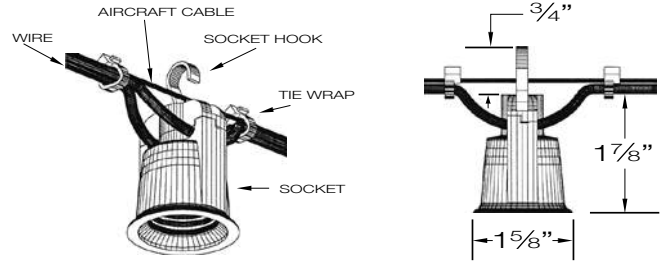
WWW.PRIMUSLIGHTING.COM



SUSPENDED DECORATIVE STRINGLIGHT SYSTEMS



PROJECT:
TYPE:



SOCKET, WIRE & CABLE DETAILS

Decostrings are a perfect accent lighting solution to add a personal ambience to patios, courtyards, atriums, restaurants, amusement parks and any open area. The “festoon” lighting system is typically strung between two anchorage points with optional intermediary support and electrically fed from one end. The sockets can be either symmetrically spaced or randomly spaced to suit the application. Optional shades, guards and lenses complete the architectural design.

SPECIFICATIONS

LAMPHOLDER	Black phenolic, medium base UL weatherproof with hook for optional mounting.
POWER CORD	12/2 G. Black flexible duplex cable, UV rated for extended outdoor use.
SUPPORT CABLE	3/32" SS aircraft catenary cable supports the system, 980# test. Heavier cable available.
TERMINATION KITS	Heavy duty stainless steel hardware available.
LAMPS	Wet location rated LED and incandescent medium base A, G or S style lamps.
DIMMING	Dimmable to 10% with ELV trailing edge type dimmers.
VOLTAGE	120V system (1920 watts max load). No driver or transformer required.
ACCESSORIES	Optional brass, aluminum and acrylic shades. Consult factory for custom shades.
PHOTOMETRY	Bare lamp and shielded “BUG” rated .IES files available.
CERTIFICATION	ETL listed for permanent damp or wet installations. 2001431 MADE IN THE USA

PART NUMBER

SERIES	SPACING	VOLTS	LAMP	SHADE-FINISH	TERMINATION KIT	LENGTH
DSD DAMP	12 12"O/C	120 120V	SELECT FROM LAMP PAGE 3	OPTIONAL	OPTIONAL	SPECIFY
DSW WET	18 18"O/C			SELECT FROM PAGE 4 & 5 OR LEAVE BLANK	STK STANDARD TERMINATION KIT	
	24 24"O/C				LTK LIGHTWEIGHT TERMINATION KIT	
	36 36"O/C				TBK TURNBUCKLE KIT (SEE PAGE 6)	
	48 48"O/C (OTHER, SPECIFY)					

LED FILAMENT STYLE LAMPS



S14

S14-24/150 – 24K, 1.5W, 150L, CLEAR
 S14-27/150 – 27K, 1.5W, 150L, CLEAR

WHITE OR FROSTED – CONSULT FACTORY



G16.5

G16.5F-24/325 – 24K, 3.5W, 325L, CLEAR
 G16.5F-27/325 – 27K, 3.5W, 325L, CLEAR

G16.5F-24/200 – 24K, 2W, 200L, CLEAR
 G16.5F-27/200 – 27K, 2W, 200L, CLEAR

WHITE OR FROSTED – CONSULT FACTORY



VINTAGE LED LAMPS
 CONSULT FACTORY



A15 & A19

CONSULT FACTORY



S14 VARIOUS COLORS
 CONSULT FACTORY



G25

CONSULT FACTORY

* ADD "SC" SUFFIX FOR SILICONE COATING (FOOD SERVICE)

* SEE INDIVIDUAL DATA SHEETS FOR COMPLETE LAMP SPECIFICATIONS

* LED LAMPS SPECIFICALLY WET RATED AND DIM DOWN TO 10% WITH A TRAILING EDGE (ELV) DIMMER.

INCANDESCENT LAMPS (OPTIONAL)



LF

A15 CLEAR 120V 25W



LS

S14 CLEAR 120V 11W
 COLORS AVAILABLE



LH-C

G16.5 CLEAR 120V 25W
LH-W
 G16.5 WHITE 120V 25W



LG

S11 CLEAR 120V 7.5W
 COLORS AVAILABLE

FULL SPECIFICATION SHEETS AVAILABLE AT PRIMUSLIGHTING.COM.

DSC7 7" W X 3" H CONE SHADE 6 OZ
DSC10 10" W X 3" H CONE SHADE 9 OZ
DSC12 12" W X 4" H CONE SHADE 18 OZ

FINISH: ACID ETCHED BRASS OR POWDER COAT

PROVIDES 0/0/0 BUG RATING



SHOWN: AGED BRASS (AB)

DSH4 4" W X 1 7/8" H HAT SHADE 2 OZ
DSH6 6" W X 2 1/4" H HAT SHADE 4 OZ
DSH8 8" W X 2 3/4" H HAT SHADE 6 OZ

FINISH: ACID ETCHED BRASS OR POWDER COAT

FACTORY INSTALLED



SHOWN: VERDE BRASS (VB)

DSRW4 4" W X 1 7/8" H RADIAL WAVE SHADE 2 OZ
DSRW6 6" W X 2 1/4" H RADIAL WAVE SHADE 4 OZ
DSRW8 8" W X 2 3/4" H RADIAL WAVE SHADE 6 OZ

FINISH: ACID ETCHED BRASS OR POWDER COAT

FACTORY INSTALLED



SHOWN: POWDER COAT BLACK (PCB)

DST4P 4" W X 6" H PERFORATED TUBE SHADE 11 OZ
DST6P 6" W X 8" H PERFORATED TUBE SHADE 22 OZ

FINISH: ACID ETCHED BRASS OR POWDER COAT



SHOWN: RAW (RB)

DST4C 4" W X 6" H WIRE CAGE TUBE 9 OZ
DST6C 6" W X 8" H WIRE CAGE TUBE 15 OZ

FINISH: ACID ETCHED BRASS OR POWDER COAT



SHOWN: AGED BRASS (AB)

DSRG 6" W X 5 1/8" H 9 OZ
 ROUND SHADE WITH GUARD

FINISH: ACID ETCHED BRASS OR POWDER COAT

* DELETE "G" FOR NO GUARD.

FACTORY INSTALLED



SHOWN: CUSTOM TEXTURED BRONZE

DSWG 3 7/8" W X 5 5/8" H 6 OZ
 WIRE GUARD

FINISH: CAD PLATED OR POWDER COAT BLACK
 CAN BE USED WITH CONE SHADE DSC10, DSC12



SHOWN: POWDER COAT BLACK (PCB)

DSSLG 3 1/2" W X 4 1/2" H 3 OZ
 ALUMINUM SQUARE LAMP GUARD
 FINISH: POWDER COAT OR BRUSHED ALUMINIUM



SHOWN: BRUSHED ALUMINIUM (BA)

DSRLG 5" W X 4" H 6 OZ
 METAL ROUND LAMP GUARD
 FINISH: POWDER COAT ONLY



SHOWN: POWDER COAT SILVER (PCS)

DST3A 3" W X 6" H ACRYLIC TUBE SHADE 8 OZ
DST5A 5" W X 8" H ACRYLIC TUBE SHADE 14 OZ
 FINISH: OPAL WHITE, CLEAR OR FROSTED



SHOWN: OPAL WHITE (O)

DSS8 8" DIAMETER ACRYLIC SPHERE 9 OZ
DSS10 10" DIAMETER ACRYLIC SPHERE 16 OZ
DSS12 12" DIAMETER ACRYLIC SPHERE 22 OZ
 FINISH: OPAL WHITE, CLEAR OR FROSTED



SHOWN: OPAL WHITE & CLEAR (O & C)

DSQ8 8" DIAMETER ACRYLIC SOFT CUBE SHADE 12 OZ
DSQ10 10" DIAMETER ACRYLIC SOFT CUBE SHADE 20 OZ
DSQ12 12" DIAMETER ACRYLIC SOFT CUBE SHADE 26 OZ
 FINISH: OPAL WHITE, CLEAR OR FROSTED



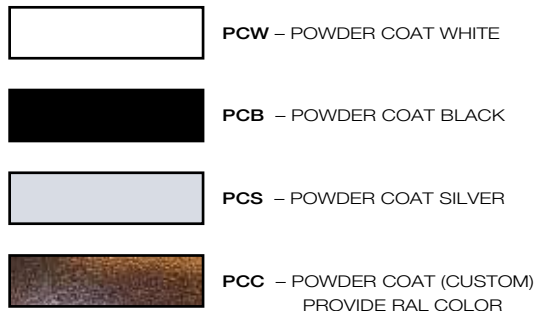
SHOWN: FROSTED (F)

SHADES & GUARDS FINISH CODES

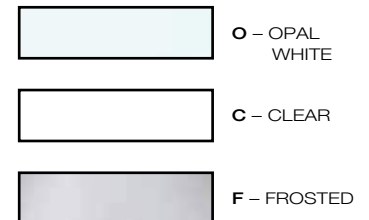
RAW & ACID ETCHED FINISHES



POWDER COAT FINISHES



ACRYLIC FINISHES

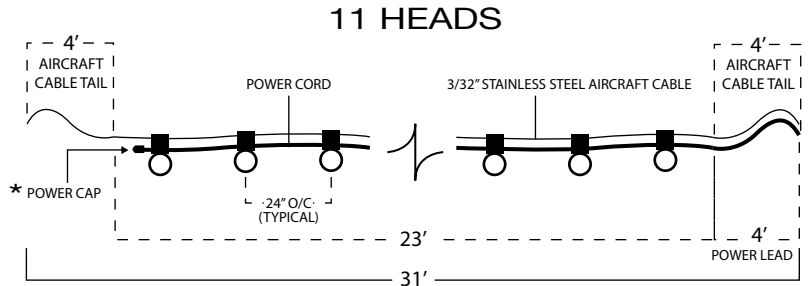
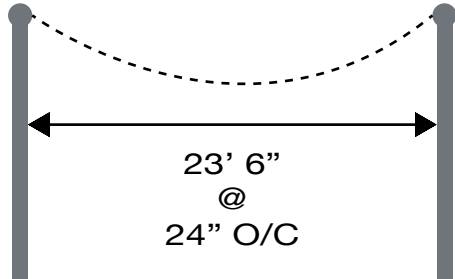


SHADES & GUARDS FINISH NOTES

- Decostring shades are hand crafted from solid brass or aluminum and feature either chemical etched or powder coat finishes.
- Most shades are shipped separately and attached to cable system with a tool-less keeper ring.
- All shades and guards dimensions are nominal.
- Please contact us for material, finish and shape variations or custom designs.

Decostrings are ordered and built to specific run lengths and include 4' aircraft cable tails on each end and a 4' power lead on one end for adjustment and make-up. Order the measured length between mounting points rounded down to the nearest foot which allows for ample droop and centering adjustment. See "Installation Guide" for detailed instructions. Estimate dead weight load at 5oz/ft. for most common 24" O/C spacing. A simple straight run example is shown below resulting in a 23' run to order.

Example:



* OPTIONAL: LEADS BOTH ENDS FOR SPLICING

TERMINATION KITS

Commercial grade heavy duty stainless steel cable termination kits. System working load 175# using standard *Decostring* 3/32" suspension cable to attach to typically a 1/4" eye or mounting tab (by others). Complete hardware for both cable ends. Order (1) kit per run. Other components available.



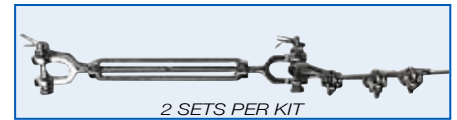
STK

STANDARD TERMINATION KIT
For Drooped Suspension | 5/16" Gate



LTK

LIGHTWEIGHT TERMINATION KIT
Maximum Working Load 30 LBS

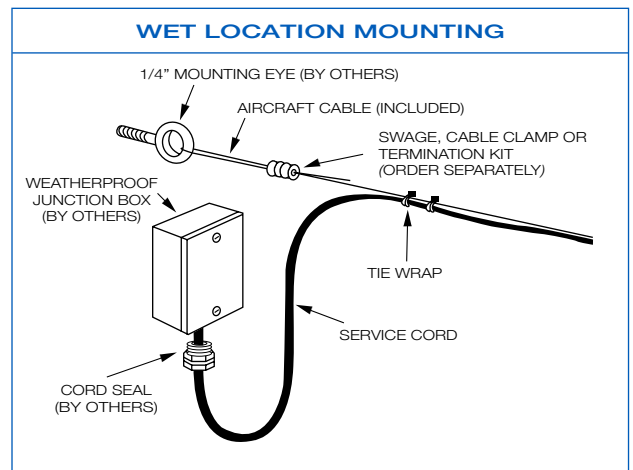
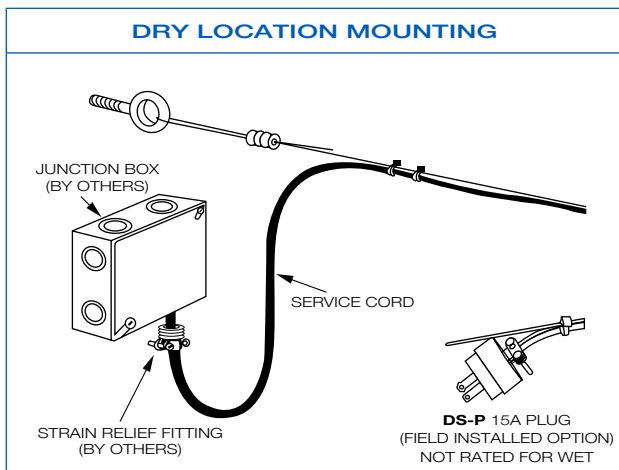


TBK

TURNBUCKLE KIT
Only for Tensioned Suspension | 7/16" Gate

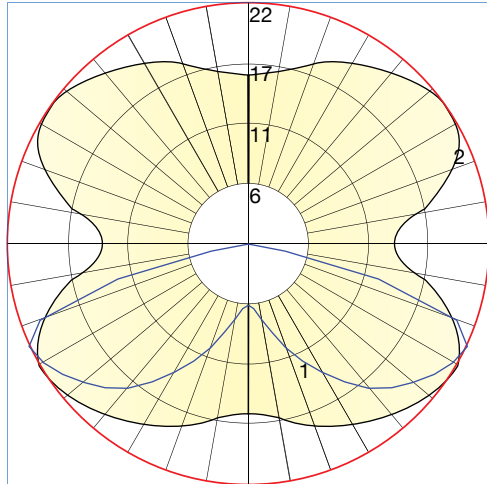
POWER CONNECTIONS

Decostrings are designed to be permanently installed and hard wired to a junction box. Customary wet location make-up includes a drip loop and mechanical termination to a weatherproof j-box using an appropriate nylon cord grip



PHOTOMETRICS / CANDELA DISTRIBUTION / BUG RATING

S14-27/150 LAMP WITH 7" CONE SHADE

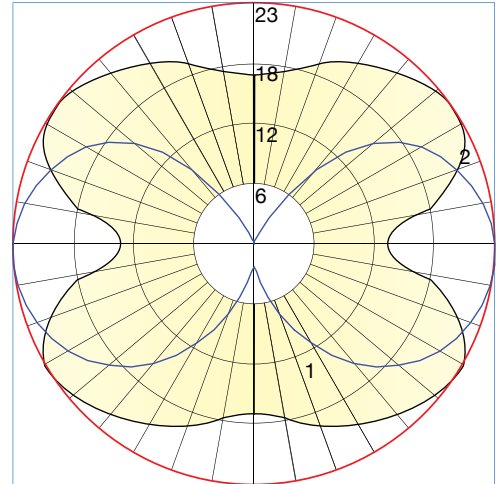


POLAR GRAPH

FILE NAME: L051504704.IES
 Maximum Candela = 22,135
 Located at Horizontal Angle = 30
 Vertical Angle = 65

#1-Vertical Plane Through Horizontal Angles (30-120) (Through Max. Cd.)
 #2-Horizontal Cone Through Vertical Angle (65) (Through Max. Cd.)

S14-27/150 BARE LAMP ONLY



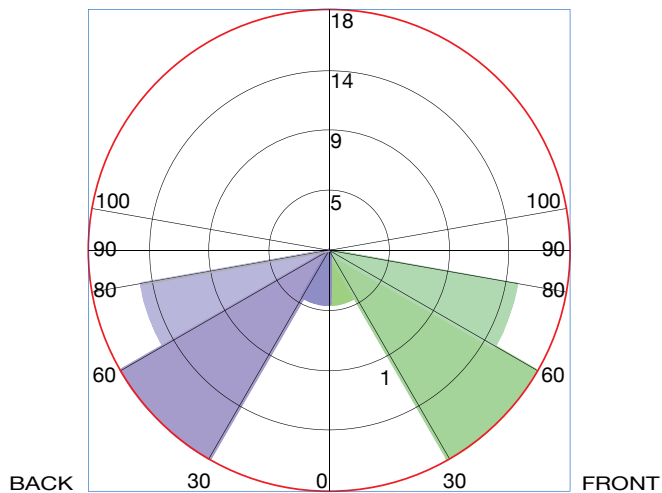
POLAR GRAPH

FILE NAME: L051504703.IES
 Maximum Candela = 23,392
 Located at Horizontal Angle = 30
 Vertical Angle = 85

#1-Vertical Plane Through Horizontal Angles (30-120) (Through Max. Cd.)
 #2-Horizontal Cone Through Vertical Angle (85) (Through Max. Cd.)

LUMINAIRE LUMENS

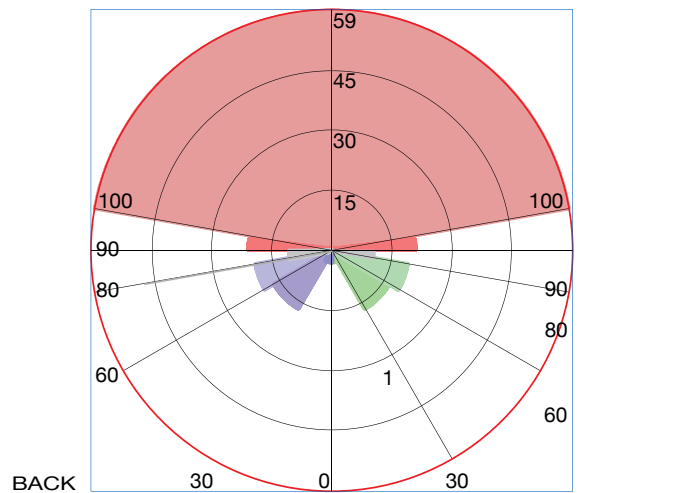
UPLIGHT



FILE NAME: L051504704.IES
BUG RATING: B0-U0-G0

LUMINAIRE LUMENS

UPLIGHT



FILE NAME: L051504703.IES
BUG RATING: B0-U3-G1



PRIMUSLIGHTING.COM

Regressed Gimbal Wet, Air-Tight By Lotus LED Lights

Regressed Gimbal Wet, Air-Tight
By Lotus LED Lights

Product Options

Finish: Black,
Beam Spread: Flood,
Color Temperature: 2700

Details

Material: Metal
Dimmable when used with a Standard Dimmer (Not Included)
UL Listed Wet
Warranty: 10 Year on Residential, 5 Year on Commercial
Applications
Made In China

Dimensions

Trim: Width 4.25", Height 2.5", Depth 2.5", Weight
1.1Lbs

Lighting

2700

Lamp Type	LED Built-in
Total Lumens	580
Total Watts	7.50
Volts	120
Color Temp	2700 (Warm)
Average Lifespan	50000.00
CRI	90
Equivalent Halogen, CFL or LED Bulb Can Be Used	No



Notes:

Prepared
by:

Prepared for:
Project:
Room:
Placement:
Approval:

Additional Details

Product URL:
<https://www.lumens.com/regressed-gimbal-wetand-air-tight-by-lotus-led-lights-LOT1927668.html>
Rating: UL Listed Wet

ITEM#: LOT1927668